



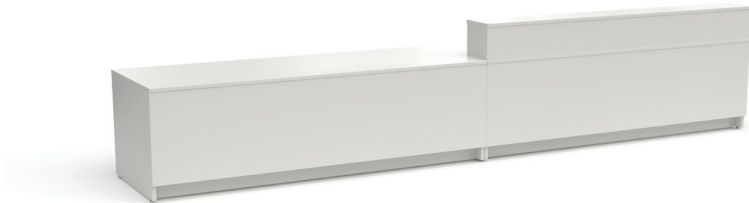
# TRANSACTION DESK SYSTEM

This desk establishes a welcoming presence while reinforcing appropriate boundaries. Optional transaction counters and storage units add functional space above and below the worksurface.



# TRANSACTION DESK SYSTEM

This desk establishes a welcoming presence while reinforcing appropriate boundaries. Optional transaction counters and storage units add functional space above and below the worksurface.



## SIZES

### DESK

W: 48, 60, 72, 84"

D: 30"

H: 29"

### CASE

W: 30, 36, 84"

D: 30"

H: 29"

### TRANSACTION COUNTER

W: 24, 30, 36, 48, 60, 72, 84"

D: 10"

H: 10"

### UNDER-WORKSURFACE STORAGE

W: 23"

D: 20"

H: 26"

## MOBILITY

- Leveler (case)
- Caster (under-worksurface storage)

## FINISHES

- HPL (worksurface)
- TFL (case)

## ACCESSORIES

- Burele - power
- Grommet

See spec guide for more detail on size combinations. Accessories are not available on all worksurface sizes/shapes.

# Transaction Desk System

The modular transaction desk system has an easy planning logic and creates a clean, crisp visual solution. Perfect in the library, administration areas or anywhere else a greeting space is desired, Fleetwood's transaction desk is compatible with Designer 2.0 and Illusions 2.0 storage solutions to create a cohesive look throughout school environments.



## STRAIGHT DESK

W: 48, 60, 72, 80"  
D: 30"  
H: 29"



## CURVED COUNTER

W: 30"  
D: 30"  
H: 10"



## STRAIGHT COUNTER

W: 24, 36, 48, 60, 72, 84"  
D: 10"  
H: 10"



## CORNER FILLERS

W: 30"  
D: 30"  
H: 29"



## BOOK RETURN

W: 36"  
D: 30"  
H: 29"



## BOOK DROP CART

W: 32.5"  
D: 20"  
H: 26"



## SHELF

No doors/Locking doors  
W: 36"  
D: 30"  
H: 29"



## LATERAL FILE

Locking drawers  
W: 36"  
D: 30"  
H: 29"



# Transaction Desk System

## Under Desk Storage



### **BOX DRAWER SHELF**

Locking drawer

W: 23"

D: 20"

H: 26"



### **BOX - FILE DRAWER**

Locking drawers

W: 23

D: 20"

H: 26"



### **SHELF - FILE DRAWER**

Locking drawer

W: 23"

D: 20"

H: 26"



### **SHELF - FIXED**

W: 23"

D: 20"

H: 26"



### **CABINET**

Locking doors

W: 23"

D: 20"

H: 26"



# FINISHES

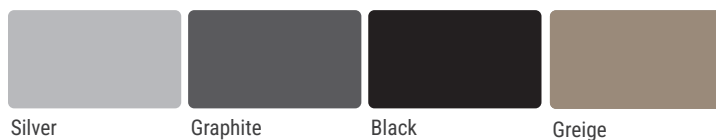
Color and finish options are available across the entire product portfolio to ensure a cohesive look and feel within a classroom, school, or even a district.

## LAMINATE & EDGE BAND OPTIONS

See spec guide for details on worksurface options.



## PAINT OPTIONS



*Colors may differ from actual product; please refer to physical swatches before ordering.  
Additional laminate and edgeband options as well as epoxy resin worksurfaces are available as special order.*



## SOLUTIONS FOR ALL LEARNING SPACES

Fleetwood's Furniture can outfit K-12 classrooms, libraries,  
media centers and any learning space in-between.

Seating  
Desks & Tables  
Storage  
Mobile Learning Station  
Calm Cubby