



## LIBRARY 2.0

This shelving, desk and mobile storage collection is perfect for libraries, media centers, common areas, administrative offices and even within classrooms. It coordinates visually, dimensionally, and functionally with all Fleetwood products, most notably double-sided Designer 2.0, Illusions 2.0, all tables and seating.



# LIBRARY 2.0

## OVERVIEW



### BUILD-UP STARTER BOOKCASE

W: 24, 30, 36"

D: 12.5"

H: 24, 29, 37, 44, 48, 60, 68, 76, 84"



### BUILD-UP ADDER BOOKCASE

W: 24, 30, 36"

D: 12.5"

H: 24, 29, 37, 44, 48, 60, 68, 76, 84"



### BUILD-UP STARTER BOOKCASE DOUBLE SIDED

W: 24, 30, 36"

D: 24"

H: 24, 29, 37, 44, 48, 60, 68, 76, 84"



### BUILD-UP ADDER BOOKCASE DOUBLE SIDED

W: 24, 30, 36"

D: 24"

H: 24, 29, 37, 44, 48, 60, 68, 76, 84"



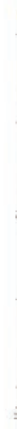
STARTER



ADDER



BOOKCASE RUN



END-OF-RUN PANEL

# LIBRARY 2.0

## OVERVIEW



### BUILD-UP BOOKCASE END-OF-RUN PANEL

W: 0.75"

D: 12.5" (Single) 24" (Double)

H: 24, 29, 37, 44, 48, 60, 68, 76, 84"



### BUILD-UP BOOKCASE FILLER

W: 12.5"

D: 0.75, 12.5"

H: 24, 29, 37, 44, 48, 60, 68, 76, 84"



### ASSEMBLED STATIONARY BOOKCASE

W: 24, 30, 36"

D: 12.5"

H: 24, 29, 37, 44, 48, 60, 68, 76, 84"



### ASSEMBLED STATIONARY BOOKCASE DOUBLE SIDED

W: 24, 30, 36"

D: 24"

H: 24, 29, 37, 44, 48, 60, 68, 76, 84"



### ASSEMBLED MOVEABLE BOOKCASE DOUBLE SIDED

Hidden casters

W: 24, 30, 36"

D: 24"

H: 24, 29, 37, 44, 48, 60, 68"



### ASSEMBLED MOVEABLE SPLIT SHELF BOOKCASE DOUBLE SIDED

Hidden casters

W: 42, 48"

D: 24"

H: 24, 29, 37, 44, 48, 60, 68"

---

## DESIGNER 2.0 DOUBLE SIDED STORAGE

Add maximum flexibility with easy to move bookshelves that match the dimensions of double sided Library 2.0.



# LIBRARY 2.0

## Mobile book truck, mobile book browser, carrel

Schools need mobile solutions to support oversized books and make books more accessible in elementary settings. Focused and independent study can be supported with carrels in a variety of settings whether in a library, media center, resource room or classroom.



### MOBILE BOOK TRUCK

W: 36"  
D: 18"  
H: 40.5"



### MOBILE BOOK BROWSER

4 Bins  
W: 30"  
D: 30"  
H: 31"



### MOBILE BOOK BROWSER

6 Bins  
W: 41.5"  
D: 28.75"  
H: 26"



*Starter*



*Adder*

### CARREL

W: 36" (Starter) 35" (Adder)  
D: 30"  
H: 38, 48"

# LIBRARY 2.0

## FEATURES & OPTIONS

- Finished on all exposed sides
- Hidden Leveler and casters
- Bracket and camlock construction
- Laminated shelf for horizontal use
- Metal shelf for horizontal use
- Metal display shelf

### PULLS OPTIONS



128mm Arch pull

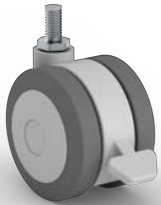


128mm Metro pull



128mm Urban pull

### MOBILITY



75mm & 100mm locking caster



Concealed caster



Leveler

### HINGES



120° soft-close european hinge

### DRAWERS & TRAYS



Drawers



# FINISHES

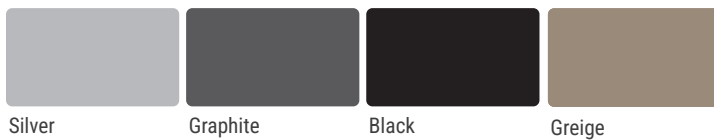
Color and finish options are available across the entire product portfolio to ensure a cohesive look and feel within a classroom, school, or even a district.

## LAMINATE & EDGE BAND OPTIONS

See spec guide for details on worksurface options.



## PAINT OPTIONS



*Colors may differ from actual product; please refer to physical swatches before ordering.  
Additional laminate and edgeband options as well as epoxy resin worksurfaces are available as special order.*



## SOLUTIONS FOR ALL LEARNING SPACES

Fleetwood's Furniture can outfit K-12 classrooms, libraries,  
media centers and any learning space in-between.

Seating  
Desks & Tables  
Storage  
Mobile Learning Station  
Calm Cubby

