



Tables & Desks | Storage | Seating | Accessories

# Tables & Desks

UNITIZED FRAME	8-11	PICNIC TABLE & BENCH	44-47
C-LEG	12-15	PEDESTAL BASE	48-51
C-LEG COMPUTER	16-19	PEDESTAL BASE & POST LEG	52-55
I-LEG	20-23	WOOD LEG	56-57
FLIP & NEST	24-27	FULL END PANEL	58-61
STACKER	28-31	WORKSTATION	62-65
PNEUMATIC BASE	32-35	CONVENTIONAL (TEACHER) DESK	66-69
CRANK HEIGHT ADJUSTABLE	36-39	TRANSACTION DESK SYSTEM	70-73
POST LEG	40-43	CARREL	74-77



The heights, widths and depths of all our tables and desks align to deliver a perfect fit. Color and finish options extend universally across the product selection to ensure a cohesive look. Rely on Fleetwood to maximize compatibility within and between school spaces, now and in the future.





# Our Tables & Desks

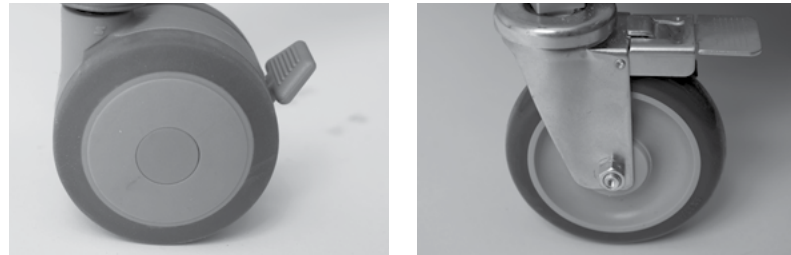
Dependable • Adaptable • Customizable

One of the industry's broadest offerings is also one of the easiest to specify, install and use across the school environment. Line-wide compatibility ensures visual and functional consistency while mobile and height-adjustable options maximize flexibility.



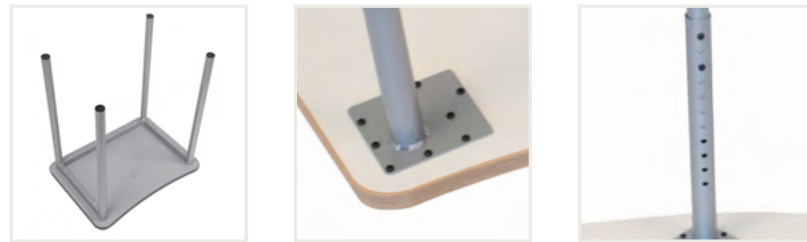
# Tables & Desks

## Key Highlights



### FIXED OR MOBILE

- Adjustable-height glides
- Smooth-rolling, quiet casters
- Standard and heavy-duty casters
- Wheelbarrow mobility, which combines the best of glides and casters



### STRONG & STABLE

- Fully welded seam joints at all connections for long life
- Robust under-worksurface frames stand up to abuse and eliminate table warpage
- Tamper-resistant, height-adjustable bolts lock in 1" increments and adjust easily to address emerging needs or accommodate different student ages
- 1" thick high-pressure laminate worksurfaces



### BASIC OR FULLY LOADED

Some like vanilla, and some prefer fully-loaded sundaes. We tailor our tables to your specifications and price point goals. Consider accessories like book boxes, shelving, bookbag hooks, power and data, or add-on mounting boards.



### MULTIPLE SHAPES, HEIGHTS AND WIDTHS

- A shape for every desire. Choose from easy-to-use rectangular tops to more geometric and organic shapes that support individuals and teams.
- Heights from 14" to 42" with adjustable heights from 20" to 42".
- Multiple table depths starting at 20"D with widths from 27" to 84".







# Unitized Frame

Rugged • Refined • Flexible

You can depend on this rugged yet refined table to stand up to the most demanding classroom challenges, including science spaces. Height adjustability, mobility and technology options accommodate different users and purposes while enabling easy reconfiguration within or between rooms. Dent-resistant, welded steel frames impart exceptional strength and stability.





# Why Unitized Frame?

Rugged • Refined • Flexible



## AT HOME ANYWHERE

Fits comfortably into all K-12 classrooms – no matter what subject is being taught.



## A TOUCH OF CLASS

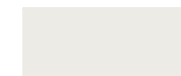
While solid, this table integrates delightful touchpoints – ergonomic edges, no-snag joinery, and smooth-action casters – to make school days pleasurable.

## HAVE IT YOUR WAY

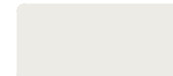
Choose this table platform as your school standard – it's perfect for individual and group use, sitting and standing applications, fixed and mobile purposes, at economical or premium budgets. Tailor it to meet your needs.



## TABLE TOP SHAPES



Rectangle



Plane



Pillow



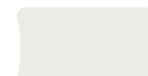
Sidekick



Wave



Hourglass



Blade



Round



Wedge



Triangle



Delta





# C-Leg

Compact • Liberating • Agile

Although small desks maximize classroom space, four-legged versions can be overly confining to seated students. Give your students more legroom and attention-enhancing comfort with this C-leg solution.





# Why C-Leg?

Compact • Liberating • Agile



## EASY LEG-SWING

Compressed spaces need to feel open and nonrestrictive. The single off-center beam allows students to easily swing around to face different focus points in the classroom.

## QUICKLY RECONFIGURE

Bulky desks can make quick transitions between individual and group work difficult. The compact C-leg on casters is easy for even the smallest student to move.



C-Leg desk



Unitized frame desk

## WHAT STUDENT DESK IS RIGHT FOR YOU?

C-Leg desks open up knee swing space and support compressed classroom footprints, while still providing plenty of space for using paper and computer simultaneously. In contrast, unitized frame desks and post-leg solutions provide more structure. All styles can be fixed or height adjustable and support book boxes.



## FLEETWOOD QUALITY PAYS BACK

Built with durability in mind, our C-Leg will look and work well for multiple generations of students no matter how you outfit it – fixed or adjustable height, static or mobile bases, basic or decked-out options.





# C-Leg Computer

Strong • Accessible • Neat

Accommodate large digital displays and CPUs by routing cords through the rugged steel wire management box at the back of this table. The wire management box which flips up for easy access.





# Why C-Leg Computer?

Strong • Accessible • Neat



## A WORKHORSE

Multiple visual screens and large computers for essential are intense programming. Fleetwood's computer table makes workflow a breeze.



## TECHNOLOGY SAVVY

Large digital displays and excessive wires are no problem. The large table features a wire management box and flip top.

## FLEETWOOD TOUGH

Classic fully-welded joinery and high-gauge steel construction makes this a table you can depend on for generations of students.







# I-Leg

Multiuse • Friendly • Reliable

This alternative to traditional four-leg tables supports different aesthetic and functional needs while increasing knee swing area under the worksurface.





# Why I-Leg?

Multiuse • Friendly • Reliable



## NOT JUST A STUDENT DESK

Our most versatile table. It is equally at home in the café as the classroom. Use it wherever you want to invite students to gather.



## TRANSFORMATIVE

This table can grow faster than your students do. It can also adjust to support different teaching styles and student preferences for sitting or standing.

## USER-SENSITIVE DESIGN

The I-Leg's single beam leg eliminates knee-knock and encourages multiple students to feel comfortable and at ease.







# Flip & Nest

Easy • Safe • Empowering

Give teachers the flexibility to move tables in and out of active use as needed. Press the recessed activation bar to flip worksurfaces up and roll them out of the way – or use them for vertical display with a markerboard surface.





# Why Flip & Nest?

Easy • Safe • Empowering



## OUR FURNITURE IS AN INVESTMENT

Suppliers who use cheap mechanisms impact productivity and budgets with broken furniture and unexpected replacement costs.



## INTUITIVE FLIP MECHANISM

This table easily flips up or down with just a light touch of the hand anywhere on the activation bar. When locked into position, it is solid and stable.

## NO PINCH POINT DESIGN

All Flip & Nest solutions are not created equal. Fleetwood's table puts student safety first with robust, ergonomic mechanisms.



## STUDENT ACTIVATED

Flip & Nest tables are key to success in multi-teaching methods within or between classroom sessions. Students become empowered to move tables quickly based on changing learning needs.





# Stacker

Space Smart • Durable • Eager to Please

Classrooms need tables but experiential learning also requires open areas. You can achieve both goals with these fully welded steel-leg tables, which stack up to three high.





# Why Stacker?

Space Smart • Durable • Eager to Please



## INDIVIDUAL AND TEAM LEARNING

Stackers are the perfect size to support individual work. Or, join them together to create interactive classroom dynamics.



## CHANGE CLASSROOMS IN A SNAP

Capitalize on table-centered learning, while opening up space to support active classroom experiences.

## MADE TO MOVE

All joints are fully welded and all Stacker tables feature bumpers to help ensure long life in demanding environments.







# Pneumatic Base

Fluid • Healthy • Tailored

Promote healthy movement by enabling teachers or students to alternate between sitting and standing throughout the day. An easy-to-operate handle underneath the worksurface adjusts height.

Pneumatic Base





# Why Pneumatic Base?

Fluid • Healthy • Tailored



## PURPOSEFUL DESIGN

The generous workspace simultaneously holds both computer and papers to optimize cross-reference activities and productivity.

Need something to support a team? Try out our double pneumatic for spontaneous project-based learning.



## ONE SMOOTH OPERATOR

Many pneumatics need coaxing or have stilted motion. Ours is effortless and quick, with a large height range that fits teachers or students. Plus, no power is needed to activate the mechanism so it's at home anywhere.

## UP. DOWN. ALL AROUND.

Sitting all day diminishes attention levels and jeopardizes health. The mobile pneumatic table encourages posture changes and movement to support multiple teaching methods.







# Crank Height Adjustable

Stable • Ergonomic • Facilitating

Give students the power to gain new leverage or perspective on their projects through vertical table movement. Table legs and worksurfaces are engineered to support heavy weight whether fixed or in motion.





# Why Crank Height Adjustable?

Stable • Ergonomic • Facilitating



## MAKERSPACE EUPHORIA

Whether working on something small or large, the user can adjust the table height to eliminate back strain.



## LIFTING CHAMP

Many height-adjustable tables require users to remove items before changing height, but this adjustable-height table lifts heavy items with ease.



## FOR ONE AND FOR ALL

The generous 42" depth encourages teamwork.







# Post Leg

Shapely • Simple • Intuitive

Integrate organic worksurface shapes, larger tops and unique configurations into your space. Fully welded legs are positioned to help ensure strength, stability and comfort. Custom shapes available.





# Why Post Leg?

## Shapely • Simple • Intuitive



### WE MAKE YOU SMILE

Fleetwood is dedicated to the best – materials, construction methods, welding processes, etc. We regularly find 40-year-old products that are still looking and performing great. It's the way we made it then. It's the way we make it now.

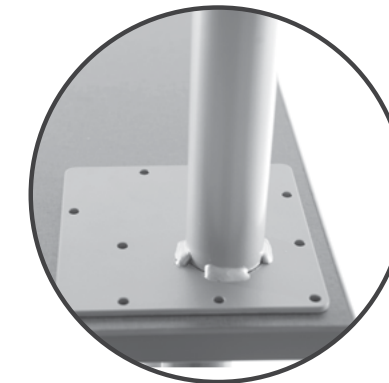


### NO JIGSAW PUZZLE

Fleetwood's shapes are intuitive, so you don't need an instruction manual to figure out the best way to use them alone or in groups.

### UP AND RUNNING

Some manufacturers require more than 15 screws per post leg, but Fleetwood's leg integrity allows for quick installation using a few pre-drilled holes, so installation costs and time are minimal. Still too long? Ask for our fully assembled factory option.



### SHAPES FOR ALL APPLICATIONS

Sometimes a rectangle doesn't cut it. We understand and provide a wide variety of shapes and styles to meet your needs. Can't find what you want? Call our sales consultants for your perfect shape.



Round



Half Round



Kidney



Horseshoe



Arc



Pillow



Chevron



Wedge



Diamond

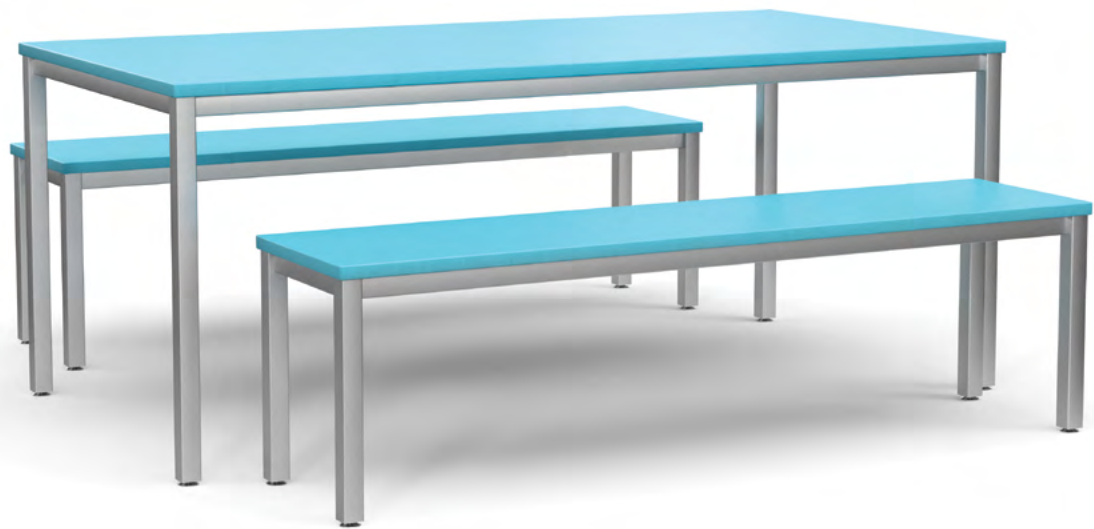


Teardrop



Blend





# Picnic Table & Bench

Inviting • Stimulating • Relaxing

Bring the outside in with this variation of an outdoor picnic table. The familiar vibe is meant to help students connect more informally in classrooms or common areas.





# Why Picnic Table & Bench?

Inviting • Stimulating • Relaxing



## BRING THE OUTSIDE IN

Recreate the engaging environment of a picnic cook-out by integrating these updated classics in your school.



## BUILT FOR ABUSE

Utilizing the same construction as our popular Unitized Frame tables, these tables and benches stand up to all the unique applications students dream up.

## LIKE A MAGNET

Whether students are looking for an individual touchdown spot or a gathering locale, picnic tables and benches provide the perfect spot.







# Pedestal Base

Organic • Clean • Impromptu

The pedestal base eliminates under-worksurface barriers to prevent knee knocks and support the organic gathering of students. The clean aesthetic declutters the visual landscape.





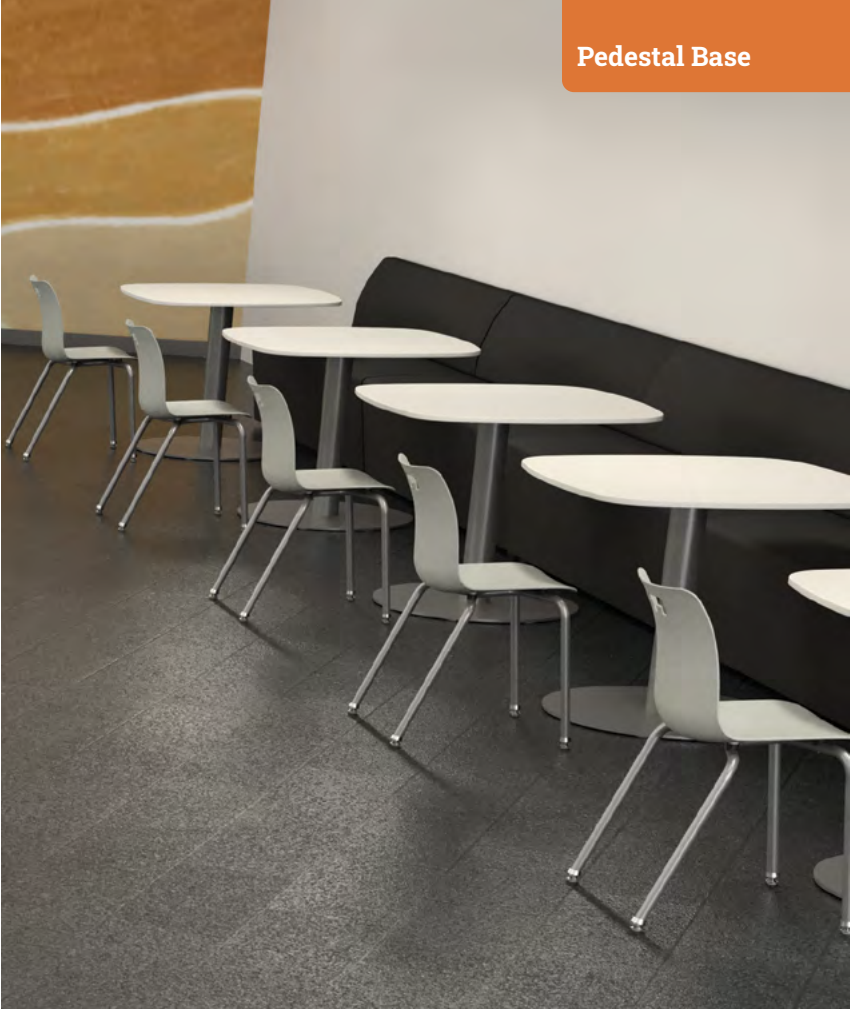
# Why Pedestal Base?

Organic • Clean • Impromptu



**PERFECT TOUCHDOWN LANDING**  
Pedestal base tables encourage spontaneous interaction on the go.

**BUILT TO LAST**  
Weighted base and solid joinery allow this table to stand up to the rigors of school life.



Pedestal Base

**NO TRIP ZONE**  
Nothing against table legs, but clean, recessed columns prove beneficial in high-traffic zones – especially when teamed with small footprint tabletops.







# Pedestal Base & Post Leg

Egalitarian • Tech Friendly • Engaging

D-shaped tops flush easily up to walls to provide space for team collaboration, and the flat end is ideal for placing a digital monitor. Two tables can be quickly joined to double group sizes.





# Why Pedestal Base & Post Leg?

Egalitarian • Tech Friendly • Engaging



**DIGITALLY ENHANCED**  
Teaming this classic table with wall-hung monitors or open-plan digital displays amplifies students’ performance.



**EQUAL PLAYING FIELD**  
Putting everyone at the same eye level, whether seated or standing, stimulates productive groupwork.



**ALONE OR TOGETHER**  
While these tables work great by themselves, they can be joined together to support larger group meetings.





### BRING THE OUTSIDE IN

Science areas can appear sterile and uninviting, but wood brings a healthy, biophilic aura into spaces.

# Wood Leg

Biophilic • Solid • Nostalgic

The classic wood-frame science table is reinterpreted for a wider range of contemporary school environments. The warm aesthetic camouflages incredibly durable construction.



### KNOCK ON WOOD

Solid wood, classic wood joinery, and heavy-duty metal bracketry make this a table that stands up to the rigors of STEM based learning.





# Full End Panel

Communal • Dynamic • Congenial

Available in two heights, these tables support sitting, perching or standing. While the narrow options create cozy touchdown spots against walls or windows, the wider tops invite gathering in open spaces.





# Why Full End Panel?

Communal • Dynamic • Congenial



## SUPPORT SOCIALIZING

Socialization is key to student growth, and this table provides a perfect hub to encourage healthy congregating.



Full End Panel

## PRIVATE. YET OPEN.

This table creates a feeling of security while remaining inviting. Its solid understructure hides lower torsos while highlighting smiling faces.

## SIT OR STAND

Whether students sit or stand, they'll be eye-to-eye with peers – ideal for creating positive social dynamics. In addition, the table comes in multiple depths to support individuals or teams.







# Workstation

Creative • Interactive • Orderly

This standing-height, high-performance workstation provides plenty of easy-access storage, a range of durable worksurface material options and Fleetwood's trademark easy-rolling 100mm diameter casters. Need something even more heavy duty? Check out our Sheerline's 5" diameter casters with metal frame.





# Why Workstation?

Creative • Interactive • Orderly



## EVERYTHING WITHIN REACH

Encourage neatness and minimize search time by keeping key tools and materials easily accessible.

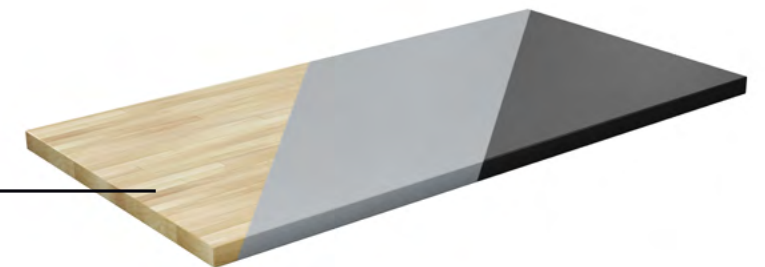
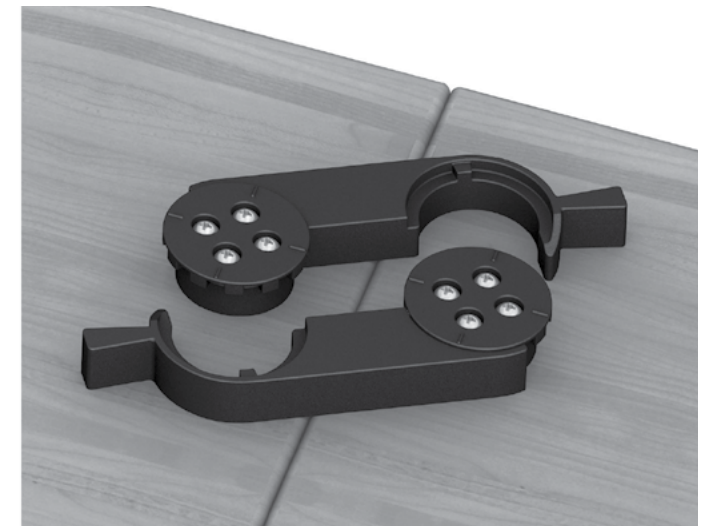


## BRING ON THE GROUP WORK

Workstations create that “around the kitchen table” atmosphere that encourages creativity, interaction and fun.

## LINK UP WITH EASE

Change your classroom dynamics by linking multiple workstations together using our locking hooks.



## WHAT'S YOUR PURPOSE?

Workstation tops support multiple kinds of teamwork environments – science, home ec, robotics, mechanical. Ask us about custom tops for sand boxes, gardening, water experiments, Lego building, etc.

Designer 2.0 workstation





# Conventional Desk

Retro • Compact • Functional

A traditional desking solution available in multiple configurations for different space and function requirements. Ample below-the-surface pedestal storage helps keep the desktop clean for teachers, school staff, and students.





# Why Conventional Desk?

Retro • Compact • Functional



## FOR TIGHT SPACES

The ominous teacher's desk of old is too big and bulky for today's smaller classrooms. These desks deliver crucial desktop space and storage in footprints as small as 48"W x 24"D.



## STORAGE FOR TODAY

While paperless remains the vision, teachers still need document and object storage. This desking solution provides ample locking storage to support classroom needs.

## WOOD AND METAL AT THEIR BEST

Wood provides inviting aesthetics and welcome sound-deadening attributes, while sturdy metal drawers stand up to abuse. Overall construction employs time-tested metal joinery.







# Transaction Desk System

Welcoming • Robust • Unified

This desk establishes a welcoming presence while reinforcing appropriate boundaries. Optional transaction counters and storage add functional space above and below the worksurface.





# Why Transaction Desk?

Welcoming • Robust • Unified



## BUILD IT YOUR WAY

The modular system features multiple pieces that can be combined in many ways to create unique configurations and function. Plus, it blends beautifully with Illusions 2.0 for optimized work environments.



## INTERACT OR FOCUS

The transaction counter encourages meet and greet activities, while the generous desktop supports digital and analog administrative uses.

## FIXED OR MOBILE

The solid desk system can be teamed with multiple fixed or mobile storage units to optimize flexibility.







# Carrel

Focused ▪ Sheltered ▪ Versatile

High side and back panels maximize privacy for studying and test-taking, whether seated or standing. Grommets and wire management trays provide power and data routing. In contrast, lower side and back panels create division without compromising openness.





# Why Carrel?

Focused • Sheltered • Versatile



**OPTIMIZE CONCENTRATION**

Sometimes individual, undistracted academic work is necessary. The carrel’s visual seclusion optimizes privacy for studying and test-taking.



**AT HOME ANYWHERE**

The carrel smoothly fits into classrooms, hallways, libraries, media centers, special education areas, or anywhere else focused work occurs.

**TECH READY**

Grommets and wire management trays support current and future technology needs.







Tables & Desks | Storage | Seating | Accessories



Check out our products,  
applications and research  
at [fleetwoodfurniture.com](https://fleetwoodfurniture.com)  
or scan the QR code.



For help creating your effective learning environment,  
contact us at 616.396.1142 or [sales@fleetwoodfurniture.com](mailto:sales@fleetwoodfurniture.com).