



Tables & Desks | Storage | Seating | Accessories



Our Storage

We offer just the right storage for every space and purpose, all boasting exceptional strength and durability for a lifetime of heavy-duty service. The comprehensive selection – including two newly enhanced collections – allows a custom fit without the custom upcharge.



DESIGNER 2.0
Page 8



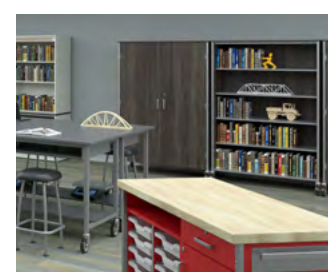
LIBRARY 2.0
Page 78



ILLUSIONS 2.0
Page 30

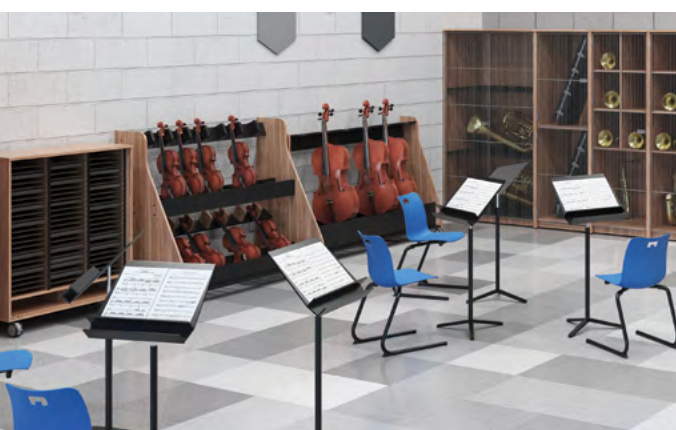


HARMONY
Page 98



SHEERLINE
Page 66

Please request a catalog to see our full line of products.



All your storage needs from one place

Fleetwood offers a broad range of options with endless flexibility, built-in mobility, and rugged construction. Key offerings are visually and dimensionally compatible, and they work perfectly with Fleetwood's tables.



DESIGNER 2.0

Page 8

Broad, safe, mobile storage portfolio that supports spontaneous classroom reconfigurations easily. Goes beyond storage to provide vertical markerboard, magnet-support, and pegboard surfaces. Can also perform as a tabletop. Platformed to work seamlessly with Illusions 2.0 as well as all Fleetwood tables.



ILLUSIONS 2.0

Page 30

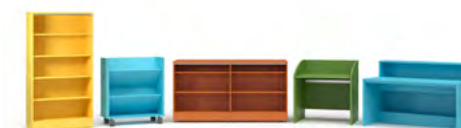
Perimeter and space division storage that replaces millwork quickly and economically. Supports compressed footprints, provides long-term flexibility, and eliminates custom requests via its expansive offering of storage types and sizes. Platformed to work seamlessly with Designer 2.0 as well as all Fleetwood tables.



SHEERLINE

Page 66

Rugged, industrial strength mobile storage that stands up to abuse in the most demanding classrooms. Blends wood with metal for the perfect sound-absorption and ding resistance combination. Phenolic or Maple block tops and 5" diameter casters meet high-performance needs.



LIBRARY 2.0

Page 78

This comprehensive system of modular components provides a clean, holistic environment that moves beyond book storage. Sound-absorptive wood components respond easily to transaction, study, transport, and storage requirements.



HARMONY

Page 98

Address visibility, privacy and security needs seamlessly for instruments, uniforms, or sheet music with this solidly built solution that also works beautifully with Fleetwood's other storage options to create music rooms that sing.

Pick the storage that’s right for you

Fleetwood has multiple storage solutions. To pick the right one for your school, think about your desires and needs relative to product features:

CONSTRUCTION

| PRODUCT | DESCRIPTION |
|---------------|---|
| Designer 2.0 | <ul style="list-style-type: none">• Particleboard construction with wide range of laminates and edgebands• Finished on all sides• 100mm visible casters• Laminate, markerboard or pegboard backs• Laminate or metal shelves• Pulls: Arch, Metro, Urban• Concealed European hinges on doors• Camlocks |
| Illusions 2.0 | <ul style="list-style-type: none">• Particleboard construction with wide range of laminates and edgebands• Finished on all sides• 4” high recessed toe kick• 4” high concealed levelers, concealed caster/leveler combination• Laminate back• Laminate or metal shelves• Pulls: Arch, Metro, Urban• Concealed European hinges on doors• Camlocks |
| Sheerline | <ul style="list-style-type: none">• Particleboard side, top, front and back panels with fully welded steel perimeter frame• Finished on all sides• Laminate, edgeband and paint options• 5" diameter visible casters• Metal shelves and bottom panel• Pulls: Arch, Metro, Urban• 5 knuckle hinges on doors• Bracket and camlock construction |
| Library 2.0 | <ul style="list-style-type: none">• Finished on all exposed sides• Particleboard shelves. Metal shelving and metal display shelf options• Bracket and camlock construction |
| Harmony | <ul style="list-style-type: none">• Particleboard construction with laminates and edgebands• Finished on all sides• Recessed toe kick• Laminate doors, wire grille doors• Levelers. Casters on mobile pieces• Plastic-wrapped shelves and bottoms• Pulls: Arch, Metro, Urban• Hasp lock with ID system on wire grille doors• Knuckle hinges on doors• Bracket construction |

Pulls



128MM ARCH PULL



128MM METRO PULL



128MM URBAN PULL

Mobility



75MM & 100MM
DIAMETER
LOCKING CASTER



5” DIAMETER
POST CASTER



LEVELER-BASED

Hinges



120° SOFT-CLOSE
EUROPEAN HINGE



5 KNUCKLE HINGE

Drawers, Shelves, Cubbies & Trays



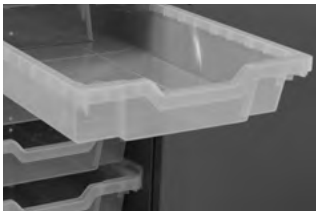
DRAWERS



SHELVES



CUBBIES



GRATNELLS TRAYS



Designer 2.0

Clean • Versatile • Core

The clean, refined look of our Designer 2.0 series is timeless – a good thing, since the furniture is built to last a lifetime. Our superior casters make it easy to move and repurpose pieces, while ergonomic edges and anti-tipping mechanisms enhance safety. Abundant aesthetic and functional options include particleboard, pegboard and markerboard backs.



Why Designer 2.0?

Clean • Versatile • Core



DIVIDE AND CONQUER

Use Designer 2.0 to create teaming hubs for students while separating groups and supporting monitors or markerboards.

Designer 2.0's high-quality casters make reconfiguration easy for students and teachers. Robust counterbalance weights keep storage units stable.



PLAYS WELL WITH OTHERS

Designer 2.0 is platformed to align with our other product lines. Use it alone or mix it with our complementary Illusions 2.0 and Fleetwood tables.

UNIQUELY YOURS

Giving you choices is our specialty. Choose your configuration – basic laminate or metal shelving, cubbies and drawers. Choose your size – from 24" to 68" high and from 24" to 48" wide in 6" increments. Choose your back – laminate, magnet-compatible markerboard or pegboard.



CLASSIC LOOK. ALWAYS IN STYLE.

Designer 2.0 features crisp lines with tight joinery and soft edges that continue to look fresh years after installation.

Shelf - Straight

Designer 2.0



Shelf Storage - Straight - No Doors & With Doors

Access: 1 side, 2 side
Width: 30", 36", 42", 48"
Depth: 20"
Height: 24", 29", 37", 44", 68"

Doors: No doors or locking doors
Shelves: Fixed & adjustable
Laminate & metal
100 lbs. capacity
Backs: Laminate, markerboard & pegboard

Curved - Shelf

Designer 2.0



Shelf Storage - Curved - No Doors

Access: 1 side, 2 side
Width: 60"
Depth: 20"
Height: 24", 29", 37", 44"

Shelves: Adjustable
Laminate & metal
35 lbs. capacity
Backs: Magnetic pegboard

Cubby

Designer 2.0



Shelf - Cubby - No Doors

Access: 1 side, 2 side
Width: 36", 42", 48", 60"
Depth: 20"
Height: 24", 29", 37", 44", 68"

Shelves: Fixed & adjustable
Laminate & metal
35 lbs. capacity
Backs: Laminate, markerboard & pegboard

Locker

Designer 2.0



Lockers

Access: 1 side
Width: 48", 60"
Depth: 20"
Height: 44", 68"

Shelves: Fixed
Laminate
35 lbs. capacity
Backs: Laminate

Shelf Drawer

Designer 2.0



Shelf-Drawer Storage - Locking Doors

Access: 1 side
Width: 24", 30"
Depth: 20"
Height: 44", 68"

Doors: Locking doors
Shelves: Fixed & adjustable
Laminate & metal
100 lbs. capacity
Drawers: Steel body
Locking
30 lbs. capacity
Backs: Laminate, markerboard & pegboard

Wardrobe Tower

Designer 2.0



Wardrobe - Tower

Access: 1 side
Width: 24"
Depth: 20"
Height: 68"
Doors: Locking doors
Shelves: Fixed & adjustable
Laminate & metal
35 lbs. capacity
Drawers: Steel body
Hold up to 30 lbs.
Locking drawers
Backs: Laminate, markerboard & pegboard

Wardrobe - Shelf

Designer 2.0



Wardrobe - Shelf Storage

Access: 1 side
Width: 36"
Depth: 20"
Height: 68"
Doors: Locking doors
Shelves: Fixed & adjustable
Laminate & metal
35 lbs. capacity
Backs: Laminate, markerboard & pegboard



Tray

Designer 2.0



Tray Storage - No Doors
Access: 1 side
Width: 42"
Depth: 20"
Height: 24", 29", 37", 44"



Tray Storage - Locking Doors
Access: 1 side
Width: 48"
Depth: 20"
Height: 24", 29", 37", 44"

Doors: No doors or locking doors
Trays: Options to hold 12-30 trays
Translucent Grannells brand
3" high tray (default). Other sizes available.
Backs: Laminate, markerboard & pegboard

Tray - Shelf

Designer 2.0



Tray-Shelf Storage - No Doors
Access: 1 side
Width: 42"
Depth: 20"
Height: 44", 68"



Tray-Shelf Storage - Locking Doors
Access: 1 side
Width: 48"
Depth: 20"
Height: 44", 68"

Doors: No doors or locking doors
Shelves: Fixed & adjustable
Laminate & metal
100 lbs. capacity
Trays: Options to hold 24 and 30 trays
Translucent Grannells brand
3" high tray (default). Other sizes available.
Backs: Laminate, markerboard & pegboard

Tray with Markerboard

Designer 2.0



Markerboard - Tray Storage

Access: 2 side
 Width: 36"
 Depth: 20"
 Height: 68"

Doors: None
 Shelves: Fixed & adjustable
 Laminate & metal
 35 lbs. capacity
 20 trays - 10 on each side
 Side: Markerboard on each side

Floor Cushion with Markerboard

Designer 2.0



Markerboard - Floor Cushion Storage

Access: 2 side
 Width: 36"
 Depth: 20"
 Height: 68"

Shelves: Fixed & adjustable
 Laminate & metal
 35 lbs. capacity
 Holds 30 cushions; 15 on each side
 Side: Markerboard on each side

Floor Cushion

Designer 2.0



Floor Cushion Storage - No Doors
 Access: 1 side
 Width: 32.5", 48"
 Depth: 20"
 Height: 24", 29", 37"



Floor Cushion - Shelf Storage - No Doors
 Access: 1 side
 Width: 32.5", 48"
 Depth: 20"
 Height: 44"

Shelves: Fixed
 Laminate & metal
 100 lbs. capacity
 Backs: Laminate, markerboard & pegboard

Drawer - Poster

Designer 2.0



Drawer Storage
 Access: 1 side
 Width: 36"
 Depth: 27"
 Height: 29"

Drawers: Steel drawer bodies
 Full extension slides
 No lock
 Backs: Laminate, markerboard & pegboard

Mobile Pedestal

Designer 2.0



Mobile Ped - Open/File
Locking drawer
15"W x 29"H x 20"D



Mobile Ped - File/File
Locking drawers
15"W x 29"H x 20"D



Mobile Ped - Box/Box/File
Locking drawers
15"W x 29"H x 20"D



Mobile Ped - Trays
No door
Holds up to 6 trays
14.5"W x 29"H x 20"D



Mobile Ped - Box/File
Locking drawers
15"W x 29" H x 20"D

Presentation Cart

Designer 2.0



Presentation Cart - Non-Locking Doors
22" or 36"W x 40"H x 22"D

- Shelf: Fixed (exposed shelf)
 Adjustable (internal shelf)
 Laminate
 100 lb. capacity fixed
 35 lb. capacity adjustable
- Power: With or with out power

Project Cart

Designer 2.0



Project Cart - Locking Door
Access: 1 side
Width: 42"
Depth: 20"
Height: 29"



Project Cart - Locking Drawer & Door
Access: 1 side
Width: 42"
Depth: 20"
Height: 37"

- Shelf: Fixed (exposed shelf)
Adjustable (internal shelf)
Laminate & metal
100 lb. capacity fixed
35 lb. capacity adjustable
- Drawers: Steel drawer bodies
Full extension slides
Locking
30 lb. capacity
- Backs: Laminate, markerboard & pegboard

3D Printer Cart

Designer 2.0



3D Printer Cart - Locking Doors
Access: 1 side
Width: 36"
Depth: 20"
Height: 37"

- Shelves: Fixed & adjustable
Laminate & metal
100 lbs. capacity
- Backs: Laminate, markerboard & pegboard

Monitor Hutch

LOW HUTCH & TALL HUTCH

Designer 2.0



IT ALL
WORKS
TOGETHER

Tables & Desks | Storage | Seating | Accessories



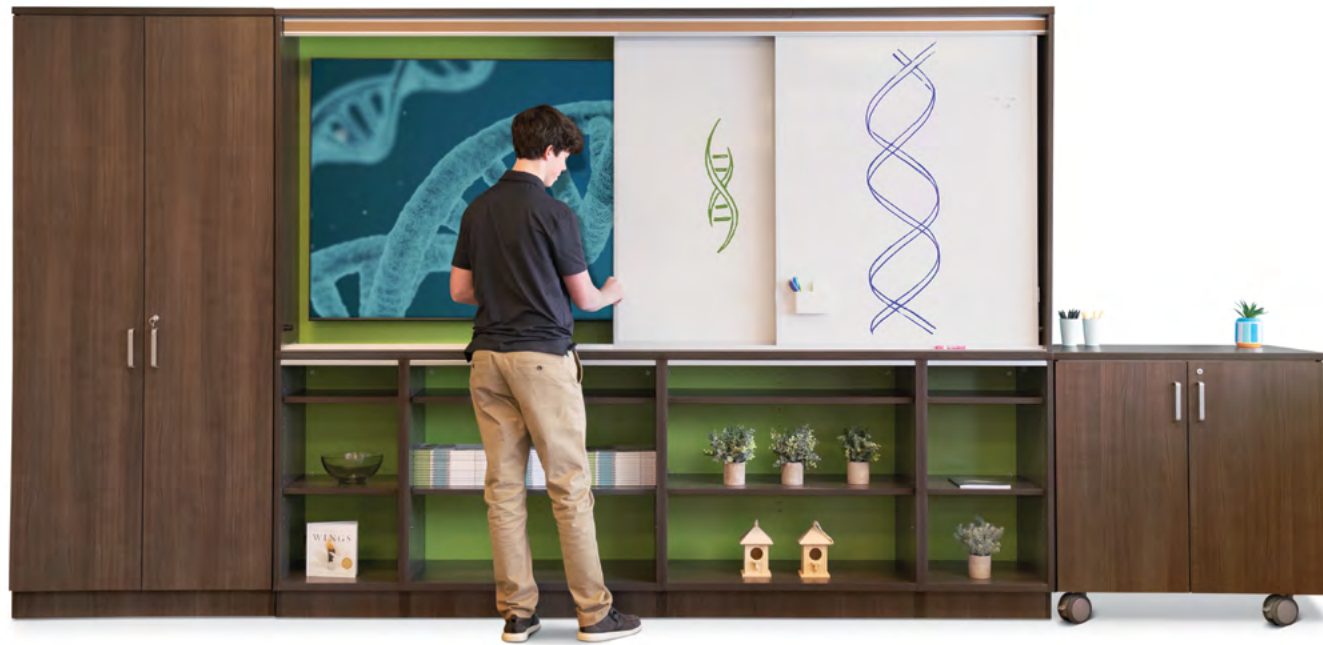
Monitor Hutch - Low Hutch - Locking Doors
Access: 1 side
Width: 48"
Depth: 20"
Height: 68"



Monitor Hutch - Tall Hutch - Locking Doors
Access: 1 side
Width: 48"
Depth: 20"
Height: 68"

Shelves: Fixed & adjustable
Laminate & metal
100 lbs. capacity
Backs: Removable access panel (Hutch only)
Magnetic markerboard (Hutch only)





Illusions 2.0

Architectural • Limitless • Futureproof

Get the look and feel of built-in storage solutions without the time and expense. Illusions 2.0 supports perimeter and space-division planning without locking you in – it's easy to move and reconfigure components as your needs change. Multiple sizes and configurations combined with modular flexibility give you near-endless options for personalizing your space.



Why Illusions 2.0?

Architectural • Limitless • Futureproof



BUILT-IN LOOK WITHOUT THE EXPENSE

Built-ins can negatively impact construction timelines and require expensive tradesmen to build and install. With Illusions 2.0, everything is planned upfront and rolled into place – so there's no interference with floor or wall finishing processes.



PLATFORMED FOR SUCCESS

Use it alone or with our complementary Designer 2.0 storage and any Fleetwood tables. All share the same platforming logic.

LOW OR HIGH. NARROW OR WIDE.

When space is tight, Illusions 2.0 can reach 84" high on a 14" deep footprint. The flexible platform accommodates 29", 37", 44", 68", 76" and 84" heights and 14", 20" and 24" depths.



14"D hutch and bookcases.



PERIMETER AND OPEN PLAN CAPABILITIES

Illusions 2.0 is finished on the back, equipped with counterbalance weights and attached to adjoining units – making it a safety-conscious solution that's equally at home against a wall or separating classroom space.

Application ideas

Have fun building your custom application. Play with depths, heights, and widths of different components to build your dream storage or learning wall. Keep it simple or layer in analog and digital display areas to boost learning opportunities. See additional thought starters online.



14" deep bookcases team with a 14" deep media hutch for a space-saving solution.



20" deep base cabinets team with 14" deep shelf and media hutches to create a functional wall assembly.



Doored-storage units team with a media hutch to create a clean, secure storage and display space.



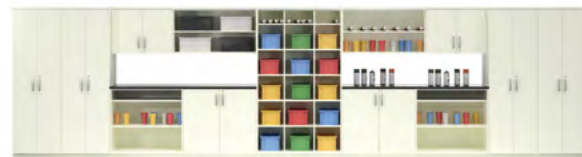
14" deep and 20" deep storage team join together to deliver easy-access storage with generous workspace areas.



Media displays, markerboards and analog storage solutions combine to provide a multidimensional classroom solution.



Wall-hung overhead storage units team with spanning work surfaces with backslashes to add additional workspaces in the classroom.



A wide variety of storage units come together to create a unique storage wall in this art room environment.



Illusions 2.0 desking units join with storage to create great individual focus areas for students away from normal classroom activities.



Illusions 2.0 + Designer 2.0 + Tables + Seating = Great Classroom Environments



While Illusions 2.0 works great alone, as called out on the opposite page, its power is multiplied when used in conjunction with Designer 2.0, any Fleetwood table, or any Fleetwood chair solution.

Illusions 2.0 and Designer 2.0 are on the same platform so heights, widths, and depths line up. In addition, Fleetwood's redesigned tables all have 29" and 37" heights and 1" thick tops to match base storage.

All seating is designed to provide the correct ergonomic gap between chair seat height and table underside.

Plus, everything is offered in the coordinating surface materials to create a unified aesthetic throughout the classroom.

How to use Illusions 2.0



TRADITIONAL PERIMETER-BASED PLANNING

Illusions 2.0 works like built-in cabinetry, yet it reduces installation cost and time and gives you long-term flexibility. Use the space efficient 20" depth or the more traditional 24" or 25" depths to create a custom look.

While traditional built-ins usually only offer shelves with doors, the wide breadth of the Illusions 2.0 of line also provides cubby, drawer, tray and other storage options.



SPACE DIVISION

Create semi-permanent room division in which Illusions 2.0 either juts out or stands independent from walls. Change your mind? Just elevate the levelers and use concealed casters to easily roll Illusions 2.0 to its next home.



LEARNING WALL LAYERED APPROACH

Place display monitors, markerboards, and storage in one easy to access unit that optimizes teaching methods and floorspace while minimizing clutter.

Because base cabinets can be 29" or 37" high, kindergarteners and high schoolers can comfortably reach markerboards. Media hutches work with 14" or 20" deep base storage.



EFFICIENT USE OF SPACE

As classroom dimensions shrink, employ Illusions 2.0 to maximize vertical and horizontal real estate. Units reach up to 84" high and can be as narrow as 14" deep.



TECHNOLOGY BLEND

Maximize flexibility as students shift between lecture and project work. After teacher-led instruction or demonstration, students can roll the Pages™ mobile markerboard system to group tables or shift their tables near the digital display to enable teamwork.

Architectural building blocks

Mix and match modular components to create the perfect overall solution for your space.



MODULAR COMPONENTS

- A** - Base cabinet
- B** - Base corner filler
- C** - Matching-width worksurface – matches width of underlying cabinet
Matching-width backsplash – matches width of underlying cabinet
- D** - Spanning worksurface – covers multiple base cabinets up to 120” wide
- E** - Spanning backsplash – used in conjunction with spanning worksurface to cover single base cabinets (i.e., if hutch is used) or multiple cabinets
- F** - Overhead storage units
- G** - Overhead corner filler
- H** - Hutch
- I** - Tall storage
- J** - Side filler
- K** - Tall storage filler



FAST, NO-TRADES INSTALLATION

Your dealer rolls Illusions 2.0 off the truck and into finished classrooms, so everything is “teacher ready” in hours versus days. It’s the perfect solution for both new construction and renovations.

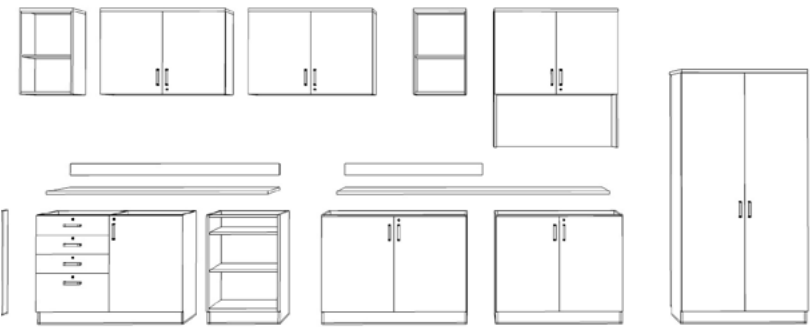
CHOICE WITHOUT SACRIFICE

Most built-ins limit you to shelves, doors and maybe a few drawers. Illusions 2.0 allows you to do so much more, including layered markerboards and digital solutions.



EASY “DO-OVERS”

New teacher? New storage needs? No problem. If functional needs change, Illusions 2.0 morphs easily. Either reconfigure existing components or add or subtract units to support new teaching methods.



Base Shelf

Illusions 2.0



Straight - no door



Straight - door

Base Shelf
Width: 15", 18", 24", 30", 36", 42", 48"
Depth: 20"
Height: 29", 37"

Shelves: Fixed and adjustable
35 lb. to 100 lb. capacity depending on width
Painted metal
29"H has 1 adjustable shelf
37"H has 2 adjustable shelves

Door: Soft close 120° European hinge
Locking

Base Posterboard

Illusions 2.0



Base Posterboard Storage
Access: 1 side
Width: 36"
Depth: 20"
Height: 29", 37"

Shelves: Fixed
Laminate
35 lbs. capacity

Base Drawer

Illusions 2.0



Base Shelf - File Drawer



Base Box Drawer



Base Box/File Drawer



Shelf - Box Drawer - No Doors



Shelf - Box Drawer - Locking Doors

Base Shelf - File Drawer
Width: 15", 18", 24", 30"
Depth: 20"
Height: 29", 37"

Base Box Drawer
Width: 15", 18", 24", 30"
Depth: 20"
Height: 29", 37"

Base Box/File Drawer
Width: 15", 18", 24", 30"
Depth: 20"
Height: 29", 37"

Drawer: Steel drawer bodies
Full extension slides
Locking
Unique lock per drawer
50 lb. capacity - box drawer
150 lb. capacity - file drawer

Shelf: Fixed & adjustable
Laminate & metal
35 lbs. to 100 lbs. capacity

Shelf - Box Drawer - No Doors
Width: 15", 18", 24", 30", 36", 42", 48"
Depth: 20"
Height: 29", 37"

Shelf - Box Drawer - Locking Doors
Width: 15", 18", 24", 30", 36", 42", 48"
Depth: 20"
Height: 29", 37"

Base Divided Drawer - Shelf

Illusions 2.0



Base Box Drawer - Shelf

Access: 1 side
Width: 30", 36", 42", 48"
Depth: 20"
Height: 29", 37"



Base Box - File Drawer - Shelf

Doors: Locking doors
Shelves: Fixed & adjustable
Laminate & metal
35 lbs. capacity
Drawer: Steel drawer bodies
Full extension slides
Locking
Unique lock per drawer
50 lb. capacity - box drawer
150 lb. capacity - file drawer

Base Tray

Illusions 2.0



Base Tray Storage - No Doors

Access: 1 side
Width: 42"
Depth: 20"
Height: 29", 37"



Base Tray Storage - Locking Doors

Access: 1 side
Width: 48"
Depth: 20"
Height: 29", 37"

Doors: No doors or locking doors
Tray: Translucent Grattells brand
3" high tray (default); other sizes available
Tray rails installed in set increments

Base Sink

Illusions 2.0



Base Desk

Illusions 2.0



Base Sink - Locking Doors
Access: 1 side
Width: 36", 42", 48"
Depth: 20", 24"
Height: 24", 29", 37"



Base Sink - ADA - No Doors
Access: 1 side
Width: 36", 42", 48"
Depth: 20"
Height: 29", 33", 37"

Doors: No doors or locking doors



Base Desk
Access: 1 side
Width: 30", 36", 42", 48"
Depth: 20", 24"
Height: 29", 33", 37"

Bookcase

Illusions 2.0



Bookcase - 1 Sided
 Width: 24", 30", 36", 42", 48"
 Depth: 14"
 Height: 24", 29", 37", 44", 68", 76", 84"
 Types: One-sided
 Shelves: Fixed & adjustable
 Laminate
 Metal
 50 lb. to 100 lb. capacity

Bookcase - 2 Sided
 Width: 24", 30", 36", 42", 48"
 NOTE: 28" W endcap bookcase (shown above right)
 for end-of-run applications
 Depth: 28"
 Height: 24", 29", 37", 44", 68", 76", 84"
 Types: Two-sided
 Doors: Open
 Shelves: Fixed & adjustable
 50 lb. to 100 lb. capacity



Tall Shelf

Illusions 2.0

Tall Cubby

Illusions 2.0



Tall Shelf Storage - No Doors
Access: 1 side
Width: 24", 30", 36", 42", 48"
Depth: 20"
Height: 68", 76", 84"



Tall Shelf Storage - Locking Doors
Access: 1 side
Width: 24", 30", 36", 42", 48"
Depth: 20"
Height: 68", 76", 84"



Tall Shelf Cubby - No Doors
Access: 1 side
Width: 24", 30", 36", 42", 48"
Depth: 20"
Height: 68", 76", 84"

Shelves: Fixed & adjustable
Laminate & metal
35 lb. capacity

Tall Locker

Illusions 2.0



Tall Locker
Access: 1 side
Width: 36", 42", 48"
Depth: 20"
Height: 68", 76", 84"

Shelves: Fixed
Laminate
35 lbs. capacity

Tall Shelf Drawer

Illusions 2.0



Tall Shelf - Box Drawer Storage
Locking doors
Access: 1 side
Width: 24", 30"
Depth: 20"
Height: 68", 76", 84"

Shelves: Fixed & adjustable
Laminate & metal
100 lbs. capacity
Drawer: Steel drawer bodies
Full extension slides
Keyed alike cylinder lock
Unique lock per drawer
50 lb. capacity - box drawer
150 lb. capacity - file drawer

Tall Wardrobe

Illusions 2.0



Tall Wardrobe - Shelf Storage - Locking doors
Access: 1 side
Width: 24", 30", 36"
Depth: 20"
Height: 68", 76", 84"



Wardrobe Cabinet - Non-locking doors
Full width garment rod
Access: 1 side
Width: 24", 30", 36", 42", 48"
Depth: 20"
Height: 68", 76", 84"
Shelves: Fixed & adjustable
Laminate & metal
Hold up to 75 lbs.

Tall Tray

Illusions 2.0



Tall Tray and Shelf Storage - No Doors
Access: 1 side
Width: 42"
Depth: 20"
Height: 68", 76", 84"



Tall Tray and Shelf Storage - Locking Doors
Access: 1 side
Width: 48"
Depth: 20"
Height: 68", 76", 84"
Shelves: Fixed & adjustable
Laminate & metal
100 lbs. capacity
Trays: Translucent Grathells brand
3" high tray (default); other sizes available
Tray rails installed in set increments

Wall Hung Shelf

Illusions 2.0



Wall Hung Shelf - No Doors & With Doors
Access: 1 side
Width: 15", 18", 24", 30", 36", 42", 48"
Depth: 14"
Height: 21", 29"

Doors: No doors or locking doors
Shelves: Adjustable
Laminate & metal
35 lb. to 100 lb. capacity

Hutch

Illusions 2.0



Hutch-Shelf - No Doors & With Doors
Access: 1 side
Width: 24", 30", 36", 42", 48"
Depth: 14"
Height: 39", 47"

Doors: No doors or locking doors
Shelves: Adjustable
Laminate & metal
35 lb. to 100 lb. capacity

Monitor Hutch

Illusions 2.0



Monitor Hutch - No Doors
Access: 1 side
Width: 72", 84", 96"
Depth: 14"
Height: 39", 47"

Hutch Learning Wall

Illusions 2.0



Hutch Learning Wall - No Doors
Access: 1 side
Width: 72", 84", 96"
Depth: 20"
Height: 39", 47"

Shelves: Adjustable
Laminate & metal
35 lb. to 100 lb. capacity

Monitor Hutch Learning Wall

Illusions 2.0



Monitor Hutch Learning Wall - No Doors

Access: 1 side
Width: 72", 84", 96"
Depth: 20"
Height: 39", 47"

Sliding Board Learning Wall

Illusions 2.0



Sliding Board Learning Wall

Access: 1 side
Width: 72", 84", 96", 108", 126", 144", 168", 192"
Depth: 6"
Height: 39", 47"

3 track rail system
Cork tack rail on top of unit
Connects to learning wall hutch and
base storage
Map hook
White porcelain steel markerboards

Fillers are available to add depth or width to your Illusions 2.0 configuration.

Spanning worksurface & backplash

Illusions 2.0



Worksurface Bridge
Access: 1 side
Width: 30", 36", 42", 48"
Depth: 20", 24", 25"
Height: 1"



Worksurface Backsplash
Access: 1 side
Width: 48"-120", 3" increments
Depth: 1"
Height: 4"



Worksurface Spanning
Access: 1 side
Width: 48"-120", 3" increments
Depth: 20", 24", 25"
Height: 1"



Side Fillers

Illusions 2.0



**BASE STORAGE
SIDE FILLER**

**TALL STORAGE
SIDE FILLER**

Front Fillers

Illusions 2.0



BASE STORAGE FRONT FILLER

(Image on right shows the filler in application)

Base Side Filler
Width: 4"
Depth: 29", 37"

Tall Side Filler
Width: 24", 30", 36", 42", 48"
Depth: 24"
Height: 68", 76", 84"

Base Front Filler
Width: 12"
Depth: 0.75"
Height: 29", 37"

Base Corner Filler

Illusions 2.0



Base Corner Filler
Access: 1 side
Width: 24", 30"
Depth: 20", 24"
Height: 29", 37"
Matching width worksurface with or without backsplash

Wall Hung Corner Filler

Illusions 2.0



Wall Hung Corner Filler - No Doors
Access: 1 side
Width: 18"
Depth: 14"
Height: 21", 29"





Sheerline

Strong • Smart • Stylish

Sheerline storage blends wood and steel for an urban, industrial look that complements any classroom design. Smooth steel perimeter frames and shelves stand up to the most demanding environments, including science spaces. Doors and drawers are engineered for superior utility and durability. Large, industrial casters make pieces easy to move yet incredibly stable.



Why Sheerline?

Strong • Smart • Stylish



MAKERSPACE TOUGH

Metal in all the right places stands up to students’ abuse, while maple block helps dampen sounds in noisy environments.



CHOOSE YOUR SURFACE

Elementary spaces call for HPL tops. High school areas need specialized materials – phenolic for chemicals or maple block for building. Sheerline delivers it all.

Eliminate cumbersome cords streaming from wall outlets. Customize your Sheerline units with worksurface-height power modules to empower students.



MORE THAN STORAGE

Workstations and presentation carts round out the portfolio, so students and teachers can cluster around oversized tables for project work.



BIGGER IS BETTER

Sheerline and complementary Fleetwood tables feature industrial 5” diameter casters that handle excess weight with ease.

Shelf - Straight

Sheerline



Shelf Storage - Straight - Single Sided

Width: 48"
Depth: 22"
Height: 34.25", 60", 72"

Doors: Open or with locking doors
Shelves: Metal
100 lbs. capacity
Frame: Fully welded steel perimeter frame

Shelf Storage - Straight - Double Sided

Width: 48"
Depth: 22"
Height: 34.25"



Drawer

Sheerline



Drawer Storage - Single Sided
Width: 48"
Depth: 28"
Height: 34.25"

Drawers: 5 non-Locking Drawers
Frame: Fully welded steel perimeter frame

Tray

Sheerline



Tray Storage - Single Sided - No Doors
Width: 42.5"
Depth: 22"
Height: 44"

Frame: Fully welded steel perimeter frame
Trays: Translucent Gragnells trays & rails

Wardrobe

Sheerline



Wardrobe Storage - Single Sided - Locking Doors

Width: 48"
Depth: 22"
Height: 72"

Shelves: Fixed & adjustable
Metal
100 lbs. capacity
Frame: Fully welded steel perimeter frame

Demonstrator Workstation

Sheerline



Shelf and Drawer Storage - Single Sided - Locking Doors and Drawers

Demonstration Mirror
Width: 60"
Depth: 24"
Height: 34.25"

Shelves: Adjustable
Metal
100 lbs. capacity
Frame: Fully welded steel perimeter frame
Positionable mirror

Workstation

Sheerline



Workstation - Shelf
No doors or with doors
Width: 50", 60"
Depth: 24", 30"
Height: 34.5"

Access: 1-side, 2-sided
Doors: Locking
Shelves: Adjustable
Metal
100 lbs .capacity
Frame: Fully welded steel perimeter frame

Project Cart

Sheerline



Project Cart -Locking Door and Drawer
Width: 42"
Depth: 20"
Height: 37"

Power: With & without power
Shelves: Adjustable
Metal
100 lbs. capacity
Frame: Fully welded steel perimeter frame



Library 2.0

Solid • Sharp • Studious

Not just for traditional libraries, this shelving, desk and mobile storage collection is also perfect for classrooms, media centers, common areas and administrative offices. It coordinates visually and functionally with other Fleetwood furniture.



Why Library 2.0?

Solid • Sharp • Studious



NOT JUST FOR LIBRARIES ANYMORE
Fleetwood’s library solutions also perform well in media centers, common areas and administrative offices.



MODULAR MAXIMIZES FLEXIBILITY
Banish obsolescence with flexible, modular solutions that can be quickly reconfigured on-site without having to pull carpets or repaint.

BEAUTIFULLY DIVIDED OR UNITED
Our stand-alone units provide easy setup and reconfiguration. Our add-on bookcases provide stability and permanence in library environments. Our mobile bookcases optimize flexibility.



CLEAN LINES ELEVATE ATMOSPHERE
When budgets prohibit millwork, don’t settle for clunky, pre-built products. Fleetwood’s transaction system provides clean lines that mimic built-ins.

Build-up starter bookcase

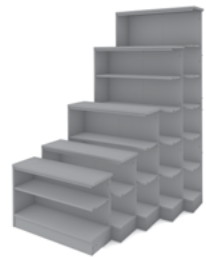
Library 2.0



Single-sided build-up starter bookcase



Double-sided build-up starter bookcase



Build-up starter bookcases

Available sizes:

Width: 24", 30" 36"

Depth: 12.5", 24"

Height: 24", 29" 37", 44", 68", 76", 84"

Access: Single-side & double sided

Shelves: Adjustable

Laminate shelf - weight capacity 100 lbs.

Metal shelf material - weight capacity 100 lbs

Display metal shelf - weight capacity 100 lbs.

Shelves adjust on 32mm spacing

Build-up adder bookcase

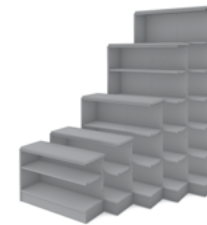
Library 2.0



Single-sided build-up adder bookcase



Double-sided build-up adder bookcase



Build-up adder bookcases

Available sizes:

Width: 24", 30" 36"

Depth: 12.5", 24"

Height: 24", 29" 37", 44", 68", 76", 84"

Access: Single-side & double sided

Shelves: Adjustable

Laminate shelf - weight capacity 100 lbs.

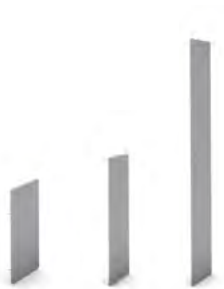
Metal shelf material - weight capacity 100 lbs

Display metal shelf - weight capacity 100 lbs.

Shelves adjust on 32mm spacing

Build-up bookcase end-of-run panel

Library 2.0



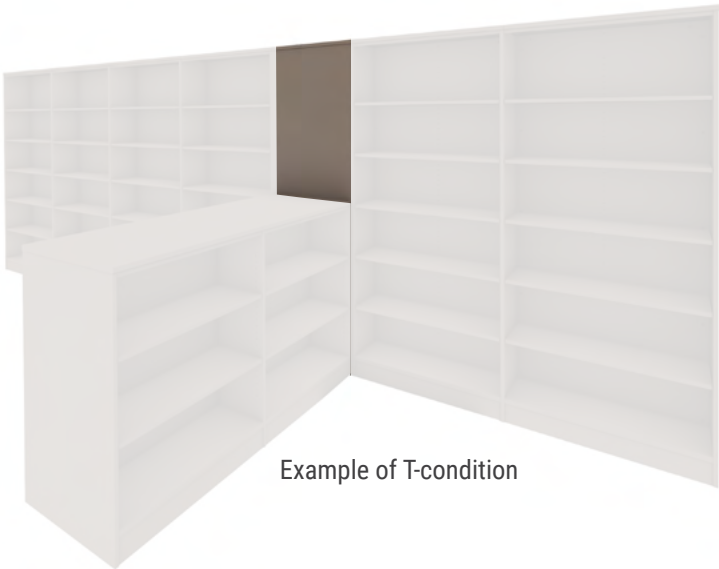
Build-up bookcase end-of-run panel
Available sizes:
Width: 12.5", 24"
Depth: .75"
Height: 24", 29", 37", 44", 68", 76", 84"

Build-up bookcase filler

Library 2.0



12.5"W and 24"W fillers



Example of T-condition



Build-up bookcase filler kit
Available sizes:
Width: 12.5", 24"
Depth: 12.5"
Height: 24", 29", 37", 44", 68", 76", 84"



Bookcase with filler on right side



Build-up bookcase filler
Available sizes:
Width: 12.5", 24"
Depth: .75"
Height: 24", 29", 37", 44", 68", 76", 84"

Build-up bookcase kit

Library 2.0



Build-up bookcase kit

Available sizes:

Width: 24", 30" 36"

Depth: 12.5", 24"

Height: 24", 29" 37", 44", 68", 76", 84"

Types: Single-side & double sided

Shelves: Adjustable

Laminate shelf - weight capacity 100 lbs.

Metal shelf material - weight capacity 100 lbs.

Display metal shelf - weight capacity 100 lbs.

Assembled bookcase (stationary and mobile)

Library 2.0



Illusions 2.0 single-sided bookcases (stationary)

Access: 1 side

Available sizes:

Width: 24", 30", 36", 42", 48"

Depth: 14"

Height: 24", 29", 37", 44", 68", 76", 84"



Illusions 2.0 double-sided bookcases (stationary and mobile)

Access: 2 side

Available sizes:

Width: 24", 30", 36", 42", 48"

Depth: 28"

Height: 24", 29", 37", 44", 68", *76", *84"

*mobile not available on 76"h and 84" h

Mobile Book Truck

Library 2.0



Mobile Book Truck
Shelves: Fixed (sloped)
Laminate
100 lbs capacity
Width: 36"
Depth: 18"
Height: 42"

Mobile Book Browser

Library 2.0



Book Browser Storage - 4 Book Bins
8 Cubbies - Lower
Width: 30"
Depth: 30"
Height: 31"



Book Browser Storage - 6 Book Bins
6 Cubbies - Lower
Width: 41.5"
Depth: 28.75"
Height: 26"



Carrel

Library 2.0



Starter unit

- 38", 48" high starter shown
- Starters may be used independently



Adder unit

- 38", 48" high adder shown
- Adder cannot stand alone





Transaction Desk System

Library 2.0

The modular transaction desk system provides easy planning logic and creates a clean, crisp visual. At home in the library, administration areas or anywhere else a greeting space is desired, Fleetwood's transaction desk is compatible with Designer 2.0 and Illusions 2.0 storage solutions to create a cohesive look throughout school environments.



Transaction Desk System

Library 2.0



Straight Desk
Height: 30"



Straight Transaction Counter
Height: 10"
(worksurface not included)



Curved Transaction Counter

Transaction counters, corner fillers, under desk storage, book returns, book carts

Available sizes:
48" to 84"W x 30"D x 30"H desks
30"W x 30"D x 30"H corner fillers
23"W x 20"D x 26"H under worksurface storage
24" to 48"W x 10"D x 10"H transaction counters



Desk with Straight Transaction Counter



Transaction Desk System

Library 2.0



Shelf - No door
Width: 36"
Depth: 30"
Height: 29"



Shelf - Locking doors
Width: 36"
Depth: 30"
Height: 29"



Lateral File
Width: 36"
Depth: 30"
Height: 29"



Corner Filler - Closed front or open front
Width: 30"
Depth: 30"
Height: 29"



Shelf - Fixed - No doors Under Worksurface
Width: 23"
Depth: 20"
Height: 26"



Cabinet - Locking doors - No middle shelf Under Worksurface
Width: 23"
Depth: 20"
Height: 26"



Drawer - locking Under Worksurface
Width: 23"
Depth: 20"
Height: 26"



Book Return
Width: 36"
Depth: 30"
Height: 29"



Book Drop Cart
Width: 32.5"
Depth: 20"
Height: 26"

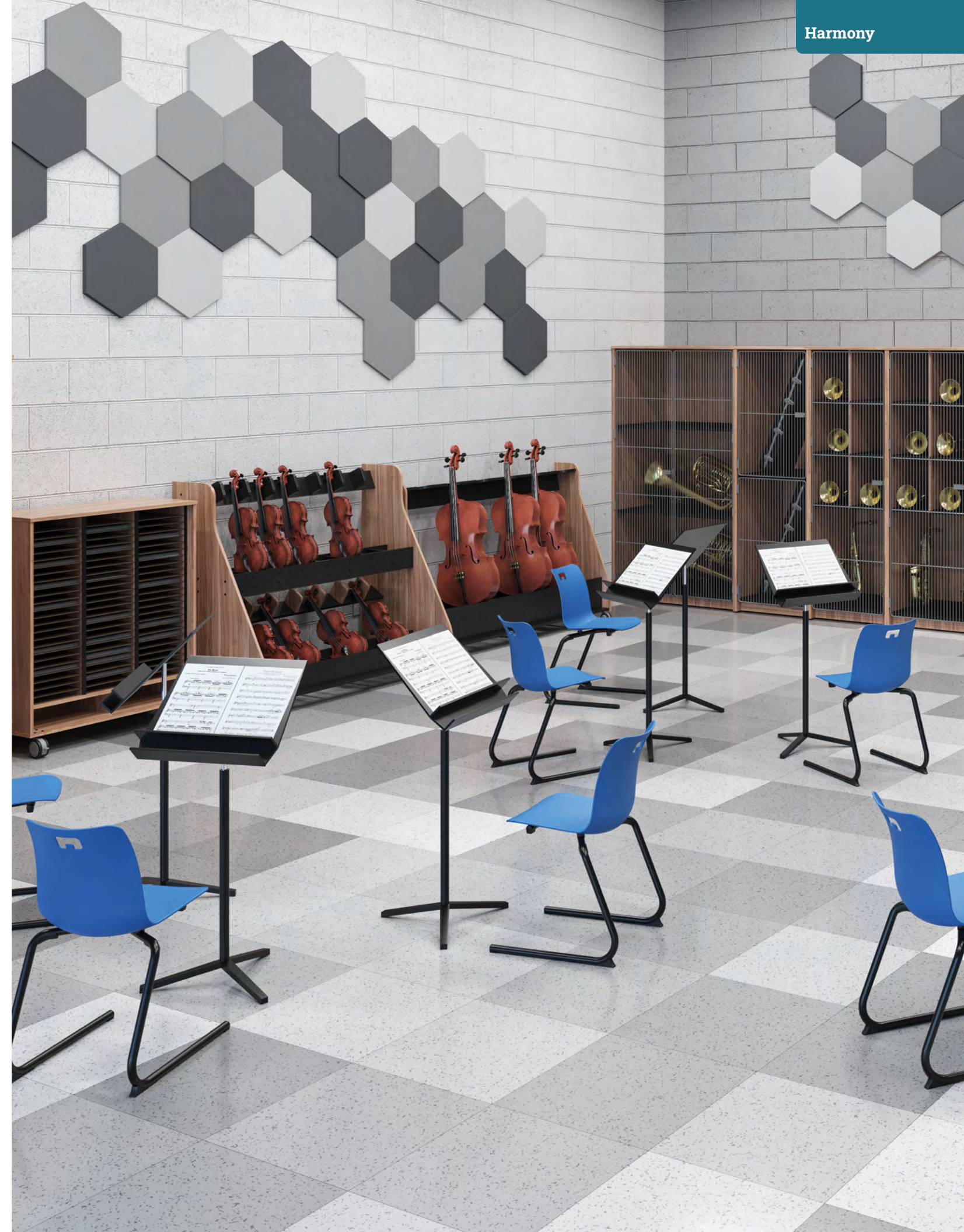




Harmony

Inclusive • Secure • Attuned

Give aspiring musicians storage that's specially made for their craft. Tell us the quantity and types of instruments you want to accommodate, and we'll do the rest. Harmony also includes garment, printed music, folio, high-density and podium solutions, so you can equip your entire music room in style.



Why Harmony?

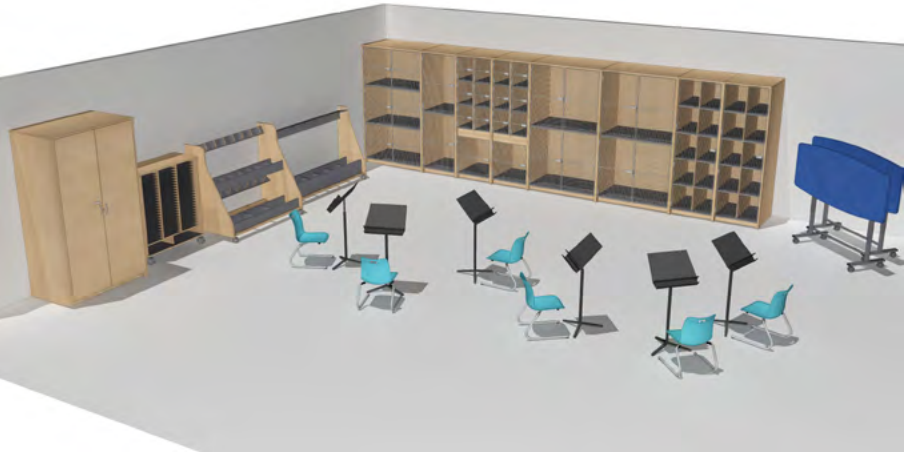
Inclusive • Secure • Attuned



VISIBLE OR NOT. OPEN OR LOCKED
 Harmony offers instrument storage with single or multiple compartments. Units can be open or have full-length grille or laminate doors. Grille compartmentalized doors are also available.

HOLISTIC SOLUTIONS FOR THE BAND
 Band rooms can be chaotic, so let Harmony bring order with its comprehensive, integrated offering that supports instruments, paper, garments, and students.

YOU TELL. WE PLAN.
 Figuring out which storage supports what instrument can be challenging. Let our design staff take on the task for you.



Instrument

Harmony

Garment

Harmony



Instrument Storage
 27"W x 84"H x 20"D
 27"W x 84"H x 30"D
 27"W x 84"H x 40"D
 48"W x 84"H x 30"D

Access: 1-side
 Doors: Open or hasp doors
 Shelves: ABS plastic wrapped shelves
 Shelves are adjustable in units without doors
 and with full length doors



Garment Storage
 27"W x 84"H x 30"D
 48"W x 84"H x 30"D

Access: 1-side
 Doors: Open or hasp doors
 Shelves: ABS plastic wrapped shelves
 Garment rod

Mobile Instrument

Harmony



Mobile Bass Storage
Width: 61"
Depth: 26"
Height: 60.5"
Holds 3 instruments



Mobile Cello Storage
Width: 75"
Depth: 22"
Height: 75"
Holds 6 instruments



Mobile Violin/Viola Storage
Width: 61"
Depth: 26"
Height: 60.5"
Holds 16 instruments

Carpeted edge in dark gray
Holds instrument with or without case

Folio

Harmony



Folio - 2 columns
Access: 1-side
Width: 29"
Depth: 18"
Height: 50"



Folio - 3 columns
Width: 42"
Depth: 18"
Height: 50"

Hardboard shelves - 3 lb. capacity
Additional storage on bottom
Metal shelf security strip

Podium

Harmony



Podium
Depth: 38"
Height: 48"
Width: 43"
Carpeted platforms in dark gray
Main platform height 6"
Steel safety rail

Music Storage System

Harmony



Music Storage System
Depth: 44"
Height: 92"
Width: 16"
Identification holder & cover
Right or left access option
Load rated pull in black
Wall mountable frame and hardware kit (required, order separately)
Shelves: White storage shelves - 2 fixed, 4 adjustable
32mm spacing

Filler

Harmony



Filler - Corner
30"W x 84"H x 30"D
40"W x 84"H x 40"D



Filler - End
12"W x 84"H x 20"D
12"W x 84"H x 30"D
12"W x 84"H x 40"D



Filler - Top
27"W x 0.75"H x 10"D
27"W x 0.75"H x 20"D
48"W x 0.75"H x 10"D



Filler - Side
27"W x 84"H x 10"D
27"W x 84"H x 20"D
48"W x 84"H x 10"D

Includes hardware to attach to adjacent cabinets
Color matched adjacent cabinets





Tables & Desks | Storage | Seating | Accessories



Check out our products,
applications and research
at fleetwoodfurniture.com
or scan the QR code.



For help creating your effective learning environment,
contact us at 616.396.1142 or sales@fleetwoodfurniture.com.