

Library 2.0

Solid • Sharp • Studious

Not just for traditional libraries, this shelving, desk and mobile storage collection is also perfect for classrooms, media centers, common areas and administrative offices. It coordinates visually and functionally with other Fleetwood furniture.



BEAUTIFULLY DIVIDED OR UNITED

Our stand-alone units provide easy setup and reconfiguration. Our add-on, build-up bookcases provide stability and permanence in library environments. Our mobile bookcases optimize flexibility.

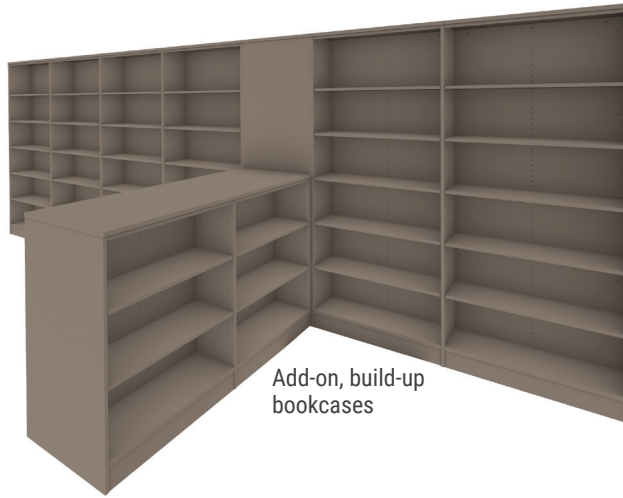
MODULAR MAXIMIZES FLEXIBILITY

Banish obsolescence with flexible, modular solutions that can be quickly reconfigured on-site without having to pull carpets or repaint.

CLEAN LINES ELEVATE ATMOSPHERE

When budgets prohibit millwork, don't settle for clunky, pre-built products. Fleetwood's transaction desk system provides clean lines that mimic built-ins.

Plus, it blends beautifully with Illusions 2.0 and Designer 2.0.



Add-on, build-up bookcases



Assembled bookcases



Transaction desk system



Library 2.0

Bookcases

SEE THE COMPLETE OFFERING IN THE
FLEETWOOD PRICE LIST OR ON THE FLEETWOOD WEBSITE.



BUILD-UP BOOKCASES FOR ULTIMATE FLEXIBILITY

Library 2.0 products consist of starter and adder bookcases with finishing end panels and fillers that are used to complete the ready-to-assemble (RTA) assemblies and provide a custom look when installed.



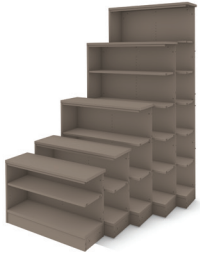
THREE TYPES OF SHELVES

- Laminated particleboard shelf for horizontal use
- Metal shelf for horizontal use
- Metal display shelf

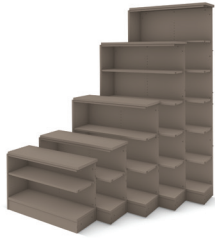


Library 2.0

Portfolio highlights – Bookcases



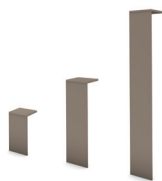
**BUILD-UP STARTER
BOOKCASE**



**BUILD-UP ADDER
BOOKCASE**



**BUILD-UP BOOKCASE
END-OF-RUN PANEL**



**BUILD-UP
BOOKCASE FILLER**



**ASSEMBLED FIXED
BOOKCASE**
(Illusions 2.0)



**ASSEMBLED
MOBILE BOOKCASE**
(Illusions 2.0)



**CURVED MOBILE
BOOKCASE**
(Designer 2.0)

SIZES

W: 24" to 48"

D: 12.5", 14", 24"

H: 24" to 84"

MOBILITY

- Leveler
- Caster

FINISHES

- TFL
- HPL (tops under 48"H)

Order end-of-run panels and fillers separately.



Library 2.0

Transaction Desk System

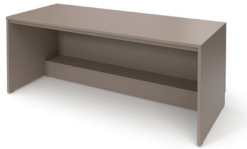
The modular transaction desk system provides easy planning logic and creates a clean, crisp visual. At home in the library, administration areas or anywhere else a greeting space is desired, Fleetwood's transaction desk is compatible with Designer 2.0 and Illusions 2.0 storage solutions to create a cohesive look throughout school environments.

SEE THE COMPLETE OFFERING IN THE
FLEETWOOD PRICE LIST OR ON THE FLEETWOOD WEBSITE.



Library 2.0

Portfolio highlights – Transaction Desk System



STRAIGHT DESK



CORNER FILLER
Closed front or open front



BOOK RETURN



BOOK DROP CART



**CURVED TRANSACTION
COUNTER**



**STRAIGHT TRANSACTION
COUNTER**



**SHELF -
NO DOOR**



**SHELF -
LOCKING DOORS**



LATERAL FILE



**BOX DRAWER -
SHELF**



**BOX -
FILE DRAWER**



**SHELF -
FILE DRAWER**



SHELF - FIXED



CABINET

SIZES

CASE

W: 30" to 84"

D: 30"

H: 30"

TRANSACTION COUNTER

W: 24" to 48"

D: 10"

H: 10"

UNDER-WORKSURFACE STORAGE

W: 24"

D: 20"

H: 26"



Library 2.0

Portfolio highlights – Mobile book truck, mobile book browser, carrel

Books most commonly reside on fixed shelving. However, schools also need mobile solutions to support oversized books and make books more accessible in elementary settings. Plus, no library or media center is complete without carrels that support focused, independent study.



SEE THE COMPLETE OFFERING IN THE
FLEETWOOD PRICE LIST OR ON THE FLEETWOOD WEBSITE.



SIZES

MOBILE BOOK TRUCK

W: 36"

D: 18"

H: 40.5"

MOBILE BOOK BROWSER

W: 30", 41.5"

D: 29", 30"

H: 26", 31"

CARREL

W: 36"

D: 30"

H: 38", 48"



MOBILE BOOK
TRUCK



MOBILE BOOK
BROWSER



CARREL

