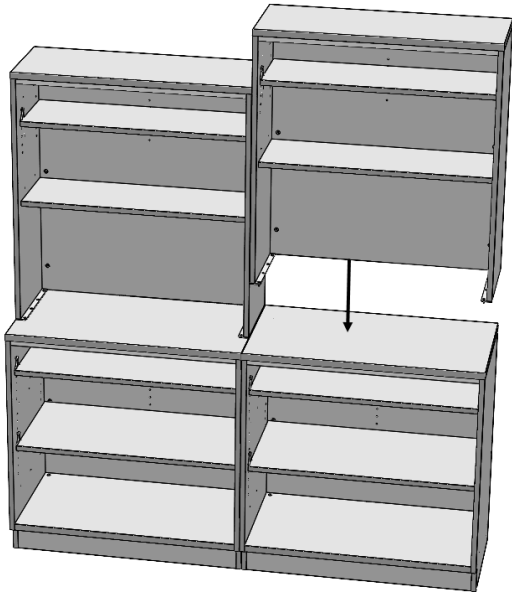


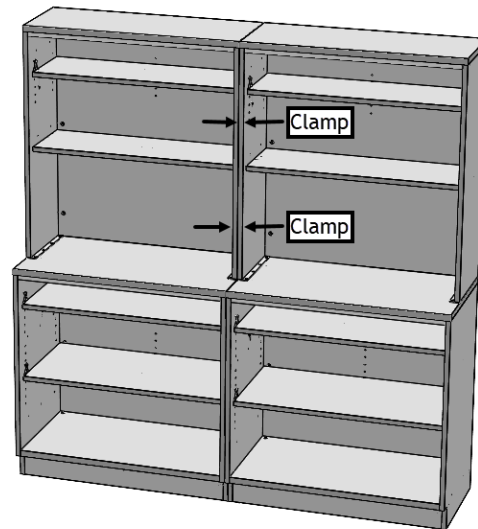
Illusions 2.0 Hutch Instructions

950780-INST
Rev. A

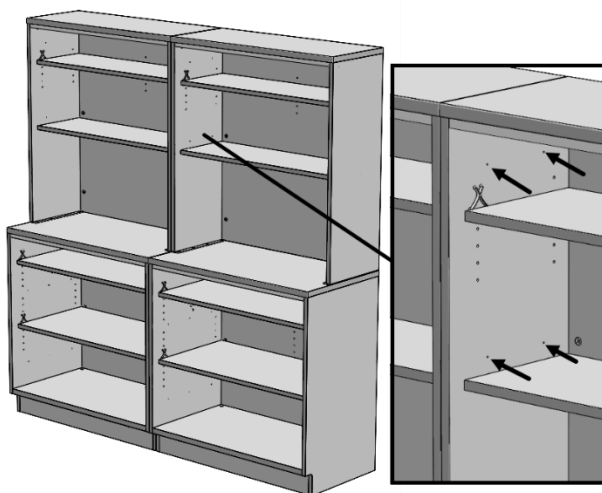
- 1.** Place each hutch into position on top of leveled base cabinets.



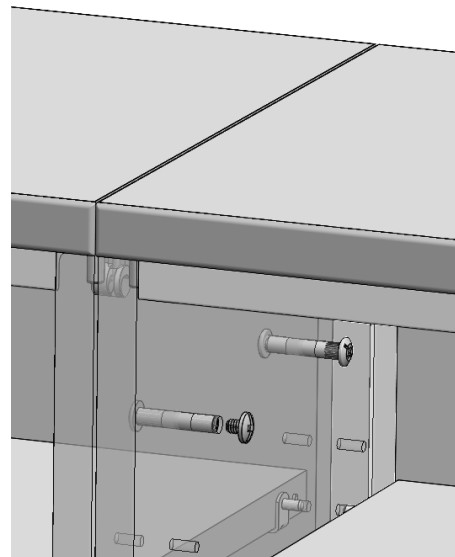
- 2.** Align hutches and then clamp them together to keep them in position for the remaining steps.



- 3.** Locate partially predrilled holes on end panels. Use a 5/16" drill bit to drill (4) holes through end panels of hutches to be joined.



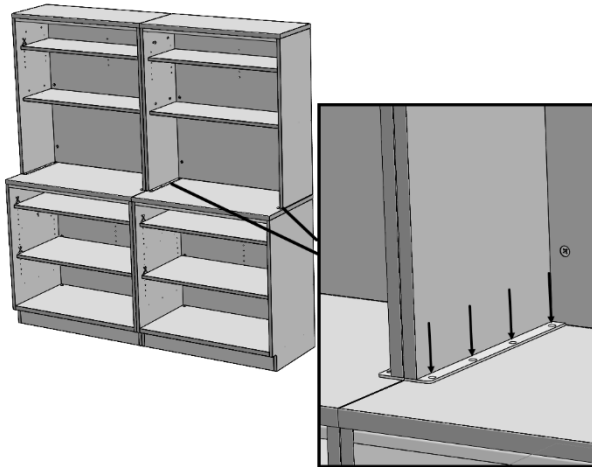
- 4.** Insert supplied connector bolts through drilled holes to connect hutches.



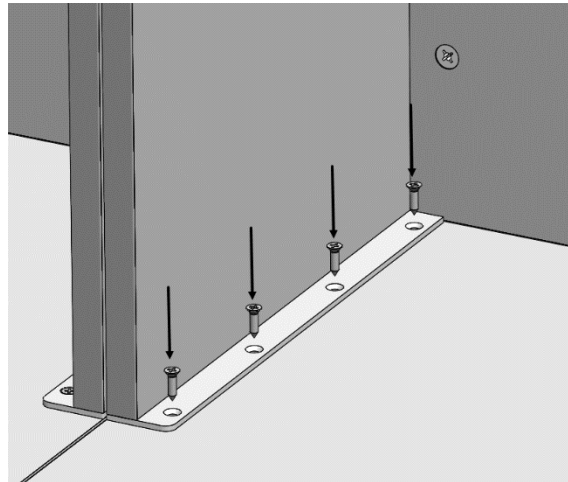
Illusions 2.0 Hutch Instructions

950780-INST
Rev. A

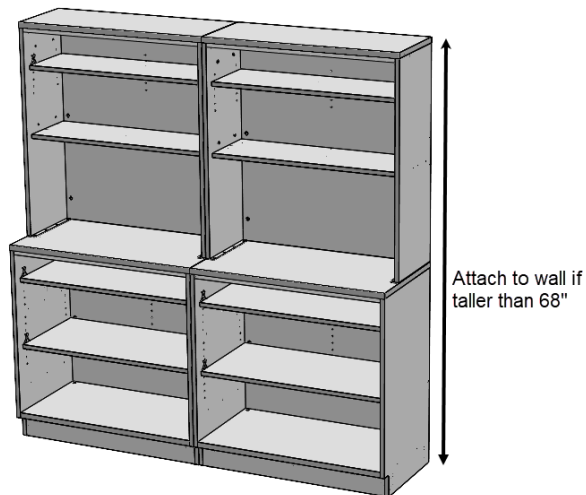
5. With hutches in position, use a 9/64" drill bit to drill into the base cabinet top through the holes in the hutch plates.



6. Attach hutches to base cabinets using (8) #10 x .750" flathead wood screws. Tighten to a torque of 30-35 in lbs.



7. If finished height of hutch is above 68" high, attach to wall per local codes and regulations.



For questions please call us at (616) 396-1142