



# TEACH • LEARN • GROW



**Fleetwood®**  
Creating effective learning environments™

Tables & Desks | Storage | Seating | Accessories

**STORAGE**





# Our Storage

We offer just the right storage for every space and purpose, all boasting exceptional strength and durability for a lifetime of heavy-duty service. The comprehensive selection – including two newly enhanced collections – allows a custom fit without the custom upcharge.



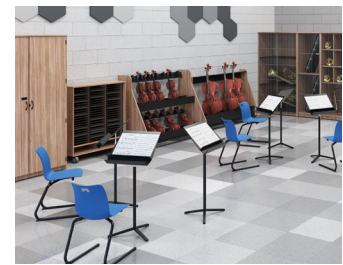
**DESIGNER 2.0**  
Page 8



**LIBRARY 2.0**  
Page 78



**ILLUSIONS 2.0**  
Page 30



**HARMONY**  
Page 98



**SHEERLINE**  
Page 66

Please request a catalog to see our full line of products.





# All your storage needs from one place

Fleetwood offers a broad range of options with endless flexibility, built-in mobility, and rugged construction. Key offerings are visually and dimensionally compatible, and they work perfectly with Fleetwood's tables.



## DESIGNER 2.0

### Page 8

Broad, safe, mobile storage portfolio that supports spontaneous classroom reconfigurations easily. Goes beyond storage to provide vertical markerboard, magnet-support, and pegboard surfaces. Can also perform as a tabletop. Platformed to work seamlessly with Illusions 2.0 as well as all Fleetwood tables.



## ILLUSIONS 2.0

### Page 30

Perimeter and space division storage that replaces millwork quickly and economically. Supports compressed footprints, provides long-term flexibility, and eliminates custom requests via its expansive offering of storage types and sizes. Platformed to work seamlessly with Designer 2.0 as well as all Fleetwood tables.



## SHEERLINE

### Page 66

Rugged, industrial strength mobile storage that stands up to abuse in the most demanding classrooms. Blends wood with metal for the perfect sound-absorption and ding resistance combination. Phenolic or Maple block tops and 5" diameter casters meet high-performance needs.



## LIBRARY 2.0

### Page 78

This comprehensive system of modular components provides a clean, holistic environment that moves beyond book storage. Sound-absorptive wood components respond easily to transaction, study, transport, and storage requirements.



## HARMONY

### Page 98

Address visibility, privacy and security needs seamlessly for instruments, uniforms, or sheet music with this solidly built solution that also works beautifully with Fleetwood's other storage options to create music rooms that sing.



# Pick the storage that’s right for you

Fleetwood has multiple storage solutions. To pick the right one for your school, think about your desires and needs relative to product features:

## CONSTRUCTION

PRODUCT	DESCRIPTION
Designer 2.0	<ul style="list-style-type: none"><li>• Particleboard construction with wide range of laminates and edgebands</li><li>• Finished on all sides</li><li>• 100mm visible casters</li><li>• Laminate, markerboard or pegboard backs</li><li>• Laminate or metal shelves</li><li>• Pulls: Arch, Metro, Urban</li><li>• Concealed European hinges on doors</li><li>• Camlocks</li></ul>
Illusions 2.0	<ul style="list-style-type: none"><li>• Particleboard construction with wide range of laminates and edgebands</li><li>• Finished on all sides</li><li>• 4” high recessed toe kick</li><li>• 4” high concealed levelers, concealed caster/leveler combination</li><li>• Laminate back</li><li>• Laminate or metal shelves</li><li>• Pulls: Arch, Metro, Urban</li><li>• Concealed European hinges on doors</li><li>• Camlocks</li></ul>
Sheerline	<ul style="list-style-type: none"><li>• Particleboard side, top, front and back panels with fully welded steel perimeter frame</li><li>• Finished on all sides</li><li>• Laminate, edgeband and paint options</li><li>• 5" diameter visible casters</li><li>• Metal shelves and bottom panel</li><li>• Pulls: Arch, Metro, Urban</li><li>• 5 knuckle hinges on doors</li><li>• Bracket and camlock construction</li></ul>
Library 2.0	<ul style="list-style-type: none"><li>• Finished on all exposed sides</li><li>• Particleboard shelves. Metal shelving and metal display shelf options</li><li>• Bracket and camlock construction</li></ul>
Harmony	<ul style="list-style-type: none"><li>• Particleboard construction with laminates and edgebands</li><li>• Finished on all sides</li><li>• Recessed toe kick</li><li>• Laminate doors, wire grille doors</li><li>• Levelers. Casters on mobile pieces</li><li>• Plastic-wrapped shelves and bottoms</li><li>• Pulls: Arch, Metro, Urban</li><li>• Hasp lock with ID system on wire grille doors</li><li>• Knuckle hinges on doors</li><li>• Bracket construction</li></ul>

## Pulls



128MM ARCH PULL



128MM METRO PULL

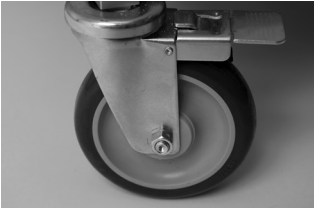


128MM URBAN PULL

## Mobility



75MM & 100MM  
DIAMETER  
LOCKING CASTER



5” DIAMETER  
POST CASTER



LEVELER-BASED

## Hinges



120° SOFT-CLOSE  
EUROPEAN HINGE



5 KNUCKLE HINGE

## Drawers, Shelves, Cubbies & Trays



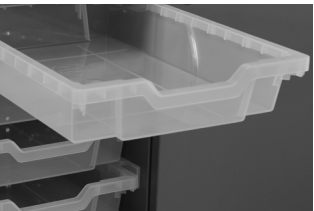
DRAWERS



SHELVES



CUBBIES



GRATNELLS TRAYS





# Designer 2.0

Clean • Versatile • Core

The clean, refined look of our Designer 2.0 series is timeless – a good thing, since the furniture is built to last a lifetime. Our superior casters make it easy to move and repurpose pieces, while ergonomic edges and anti-tipping mechanisms enhance safety. Abundant aesthetic and functional options include particleboard, pegboard and markerboard backs.





# Why Designer 2.0?

Clean • Versatile • Core



## DIVIDE AND CONQUER

Use Designer 2.0 to create teaming hubs for students while separating groups and supporting monitors or markerboards.

Designer 2.0's high-quality casters make reconfiguration easy for students and teachers. Robust counterbalance weights keep storage units stable.



## PLAYS WELL WITH OTHERS

Designer 2.0 is platformed to align with our other product lines. Use it alone or mix it with our complementary Illusions 2.0 and Fleetwood tables.

## UNIQUELY YOURS

Giving you choices is our specialty. Choose your configuration – basic laminate or metal shelving, cubbies and drawers. Choose your size – from 24" to 68" high and from 24" to 48" wide in 6" increments. Choose your back – laminate, magnet-compatible markerboard or pegboard.



## CLASSIC LOOK. ALWAYS IN STYLE.

Designer 2.0 features crisp lines with tight joinery and soft edges that continue to look fresh years after installation.



# Shelf - Straight

Designer 2.0



**Shelf Storage - Straight - No Doors & With Doors**

Access: 1 side, 2 side  
Width: 30", 36", 42", 48"  
Depth: 20"  
Height: 24", 29", 37", 44", 68"

Doors: No doors or locking doors  
Shelves: Fixed & adjustable  
Laminate & metal  
100 lbs. capacity  
Backs: Laminate, markerboard & pegboard

# Curved - Shelf

Designer 2.0



**Shelf Storage - Curved - No Doors**

Access: 1 side, 2 side  
Width: 60"  
Depth: 20"  
Height: 24", 29", 37", 44"

Shelves: Adjustable  
Laminate & metal  
35 lbs. capacity  
Backs: Magnetic pegboard



# Cubby

Designer 2.0



**Shelf - Cubby - No Doors**

Access: 1 side, 2 side  
Width: 36", 42", 48", 60"  
Depth: 20"  
Height: 24", 29", 37", 44", 68"

Shelves: Fixed & adjustable  
Laminate & metal  
35 lbs. capacity  
Backs: Laminate, markerboard & pegboard

# Locker

Designer 2.0



**Lockers**

Access: 1 side  
Width: 48", 60"  
Depth: 20"  
Height: 44", 68"

Shelves: Fixed  
Laminate  
35 lbs. capacity  
Backs: Laminate



# Shelf Drawer

Designer 2.0



**Shelf-Drawer Storage - Locking Doors**

- Access: 1 side  
 Width: 24", 30"  
 Depth: 20"  
 Height: 44", 68"
- Doors: Locking doors  
 Shelves: Fixed & adjustable  
   Laminate & metal  
   100 lbs. capacity  
 Drawers: Steel body  
   Locking  
   30 lbs. capacity  
 Backs: Laminate, markerboard & pegboard

# Wardrobe Tower

Designer 2.0



**Wardrobe - Tower**

- Access: 1 side  
 Width: 24"  
 Depth: 20"  
 Height: 68"
- Doors: Locking doors  
 Shelves: Fixed & adjustable  
   Laminate & metal  
   35 lbs. capacity  
 Drawers: Steel body  
   Hold up to 30 lbs.  
   Locking drawers  
 Backs: Laminate, markerboard & pegboard

# Wardrobe - Shelf

Designer 2.0



**Wardrobe - Shelf Storage**

- Access: 1 side  
 Width: 36"  
 Depth: 20"  
 Height: 68"
- Doors: Locking doors  
 Shelves: Fixed & adjustable  
   Laminate & metal  
   35 lbs. capacity  
 Backs: Laminate, markerboard & pegboard





# Tray

Designer 2.0



**Tray Storage - No Doors**  
Access: 1 side  
Width: 42"  
Depth: 20"  
Height: 24", 29", 37", 44"

**Tray Storage - Locking Doors**  
Access: 1 side  
Width: 48"  
Depth: 20"  
Height: 24", 29", 37", 44"

Doors: No doors or locking doors  
Trays: Options to hold 12-30 trays  
Translucent Grannells brand  
3" high tray (default). Other sizes available.  
Backs: Laminate, markerboard & pegboard

# Tray - Shelf

Designer 2.0



**Tray-Shelf Storage - No Doors**  
Access: 1 side  
Width: 42"  
Depth: 20"  
Height: 44", 68"

**Tray-Shelf Storage - Locking Doors**  
Access: 1 side  
Width: 48"  
Depth: 20"  
Height: 44", 68"

Doors: No doors or locking doors  
Shelves: Fixed & adjustable  
Laminate & metal  
100 lbs. capacity  
Trays: Options to hold 24 and 30 trays  
Translucent Grannells brand  
3" high tray (default). Other sizes available.  
Backs: Laminate, markerboard & pegboard



# Tray with Markerboard

Designer 2.0



**Markerboard - Tray Storage**

Access: 2 side  
 Width: 36"  
 Depth: 20"  
 Height: 68"

Doors: None  
 Shelves: Fixed & adjustable  
 Laminate & metal  
 35 lbs. capacity  
 20 trays - 10 on each side  
 Side: Markerboard on each side

# Floor Cushion with Markerboard

Designer 2.0



**Markerboard - Floor Cushion Storage**

Access: 2 side  
 Width: 36"  
 Depth: 20"  
 Height: 68"

Shelves: Fixed & adjustable  
 Laminate & metal  
 35 lbs. capacity  
 Holds 30 cushions; 15 on each side  
 Side: Markerboard on each side



# Floor Cushion

Designer 2.0



**Floor Cushion Storage - No Doors**  
Access: 1 side  
Width: 32.5", 48"  
Depth: 20"  
Height: 24", 29", 37"



**Floor Cushion - Shelf Storage - No Doors**  
Access: 1 side  
Width: 32.5", 48"  
Depth: 20"  
Height: 44"

Shelves: Fixed  
Laminate & metal  
100 lbs. capacity  
Backs: Laminate, markerboard & pegboard

# Drawer - Poster

Designer 2.0



**Drawer Storage**  
Access: 1 side  
Width: 36"  
Depth: 27"  
Height: 29"

Drawers: Steel drawer bodies  
Full extension slides  
No lock  
Backs: Laminate, markerboard & pegboard



# Mobile Pedestal

Designer 2.0



**Mobile Ped - Open/File**  
Locking drawer  
15"W x 29"H x 20"D



**Mobile Ped - File/File**  
Locking drawers  
15"W x 29"H x 20"D



**Mobile Ped - Box/Box/File**  
Locking drawers  
15"W x 29"H x 20"D



**Mobile Ped - Trays**  
No door  
Holds up to 6 trays  
14.5"W x 29"H x 20"D



**Mobile Ped - Box/File**  
Locking drawers  
15"W x 29" H x 20"D

# Presentation Cart

Designer 2.0



**Presentation Cart - Non-Locking Doors**  
22" or 36"W x 40"H x 22"D

- Shelf: Fixed (exposed shelf)  
Adjustable (internal shelf)  
Laminate  
100 lb. capacity fixed  
35 lb. capacity adjustable
- Power: With or with out power



# Project Cart

Designer 2.0



**Project Cart - Locking Door**  
Access: 1 side  
Width: 42"  
Depth: 20"  
Height: 29"



**Project Cart - Locking Drawer & Door**  
Access: 1 side  
Width: 42"  
Depth: 20"  
Height: 37"

- Shelf: Fixed (exposed shelf)  
Adjustable (internal shelf)  
Laminate & metal  
100 lb. capacity fixed  
35 lb. capacity adjustable
- Drawers: Steel drawer bodies  
Full extension slides  
Locking  
30 lb. capacity
- Backs: Laminate, markerboard & pegboard

# 3D Printer Cart

Designer 2.0



**3D Printer Cart - Locking Doors**  
Access: 1 side  
Width: 36"  
Depth: 20"  
Height: 37"

- Shelves: Fixed & adjustable  
Laminate & metal  
100 lbs. capacity
- Backs: Laminate, markerboard & pegboard



# Monitor Hutch

LOW HUTCH & TALL HUTCH

Designer 2.0



**Monitor Hutch - Low Hutch - Locking Doors**  
Access: 1 side  
Width: 48"  
Depth: 20"  
Height: 68"



**Monitor Hutch - Tall Hutch - Locking Doors**  
Access: 1 side  
Width: 48"  
Depth: 20"  
Height: 68"

Shelves: Fixed & adjustable  
Laminate & metal  
100 lbs. capacity  
Backs: Removable access panel (Hutch only)  
Magnetic markerboard (Hutch only)

Storage solutions  
that all works together







# Illusions 2.0

## Architectural • Limitless • Futureproof

Get the look and feel of built-in storage solutions without the time and expense. Illusions 2.0 supports perimeter and space-division planning without locking you in – it's easy to move and reconfigure components as your needs change. Multiple sizes and configurations combined with modular flexibility give you near-endless options for personalizing your space.





# Why Illusions 2.0?

Architectural • Limitless • Futureproof



**BUILT-IN LOOK WITHOUT THE EXPENSE**  
Built-ins can negatively impact construction timelines and require expensive tradesmen to build and install. With Illusions 2.0, everything is planned upfront and rolled into place – so there’s no interference with floor or wall finishing processes.



**PLATFORMED FOR SUCCESS**  
Use it alone or with our complementary Designer 2.0 storage and any Fleetwood tables. All share the same platforming logic.

**LOW OR HIGH. NARROW OR WIDE.**  
When space is tight, Illusions 2.0 can reach 84” high on a 14” deep footprint. The flexible platform accommodates 29”, 37”, 44”, 68”, 76” and 84” heights and 14”, 20” and 24” depths.



14"D hutch and bookcases.



**PERIMETER AND OPEN PLAN CAPABILITIES**  
Illusions 2.0 is finished on the back, equipped with counterbalance weights and attached to adjoining units – making it a safety-conscious solution that’s equally at home against a wall or separating classroom space.



# Application ideas

Have fun building your custom application. Play with depths, heights, and widths of different components to build your dream storage or learning wall. Keep it simple or layer in analog and digital display areas to boost learning opportunities. See additional thought starters online.



14" deep bookcases team with a 14" deep media hutch for a space-saving solution.



20" deep base cabinets team with 14" deep shelf and media hutches to create a functional wall assembly.



Doored-storage units team with a media hutch to create a clean, secure storage and display space.



14" deep and 20" deep storage team join together to deliver easy-access storage with generous workspace areas.



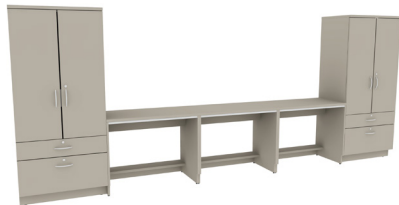
Media displays, markerboards and analog storage solutions combine to provide a multidimensional classroom solution.



Wall-hung overhead storage units team with spanning worksurfaces with backsplashes to add additional workspaces in the classroom.



A wide variety of storage units come together to create a unique storage wall in this art room environment.



Illusions 2.0 desking units join with storage to create great individual focus areas for students away from normal classroom activities.





# Illusions 2.0 + Designer 2.0 + Tables + Seating = Great Classroom Environments



While Illusions 2.0 works great alone, as called out on the opposite page, its power is multiplied when used in conjunction with Designer 2.0, any Fleetwood table, or any Fleetwood chair solution.

Illusions 2.0 and Designer 2.0 are on the same platform so heights, widths, and depths line up. In addition, Fleetwood's redesigned tables all have 29" and 37" heights and 1" thick tops to match base storage.

All seating is designed to provide the correct ergonomic gap between chair seat height and table underside.

Plus, everything is offered in the coordinating surface materials to create a unified aesthetic throughout the classroom.

# How to use Illusions 2.0



## TRADITIONAL PERIMETER-BASED PLANNING

Illusions 2.0 works like built-in cabinetry, yet it reduces installation cost and time and gives you long-term flexibility. Use the space efficient 20" depth or the more traditional 24" or 25" depths to create a custom look.

While traditional built-ins usually only offer shelves with doors, the wide breadth of the Illusions 2.0 of line also provides cubby, drawer, tray and other storage options.



## SPACE DIVISION

Create semi-permanent room division in which Illusions 2.0 either juts out or stands independent from walls. Change your mind? Just elevate the levelers and use concealed casters to easily roll Illusions 2.0 to its next home.



## LEARNING WALL LAYERED APPROACH

Place display monitors, markerboards, and storage in one easy to access unit that optimizes teaching methods and floorspace while minimizing clutter.

Because base cabinets can be 29" or 37" high, kindergarteners and high schoolers can comfortably reach markerboards. Media hutches work with 14" or 20" deep base storage.



## EFFICIENT USE OF SPACE

As classroom dimensions shrink, employ Illusions 2.0 to maximize vertical and horizontal real estate. Units reach up to 84" high and can be as narrow as 14" deep.



## TECHNOLOGY BLEND

Maximize flexibility as students shift between lecture and project work. After teacher-led instruction or demonstration, students can roll the Pages™ mobile markerboard system to group tables or shift their tables near the digital display to enable teamwork.



# Architectural building blocks

Mix and match modular components to create the perfect overall solution for your space.



## MODULAR COMPONENTS

- A** - Base cabinet
- B** - Base corner filler
- C** - Matching-width worksurface – matches width of underlying cabinet  
Matching-width backsplash – matches width of underlying cabinet
- D** - Spanning worksurface – covers multiple base cabinets up to 120” wide
- E** - Spanning backsplash – used in conjunction with spanning worksurface to cover single base cabinets (i.e., if hutch is used) or multiple cabinets
- F** - Overhead storage units
- G** - Overhead corner filler
- H** - Hutch
- I** - Tall storage
- J** - Side filler
- K** - Tall storage filler



## FAST, NO-TRADES INSTALLATION

Your dealer rolls Illusions 2.0 off the truck and into finished classrooms, so everything is “teacher ready” in hours versus days. It’s the perfect solution for both new construction and renovations.

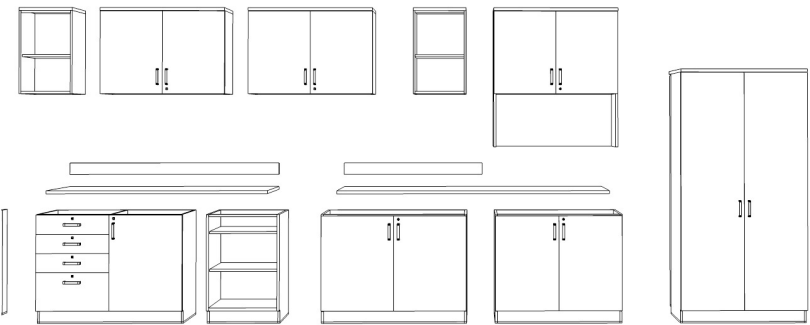
## CHOICE WITHOUT SACRIFICE

Most built-ins limit you to shelves, doors and maybe a few drawers. Illusions 2.0 allows you to do so much more, including layered markerboards and digital solutions.



## EASY “DO-OVERS”

New teacher? New storage needs? No problem. If functional needs change, Illusions 2.0 morphs easily. Either reconfigure existing components or add or subtract units to support new teaching methods.

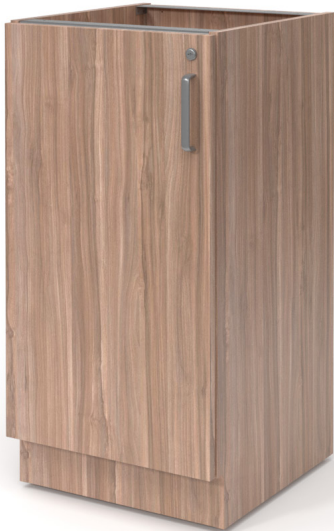




# Base Shelf

Illusions 2.0

Make the  
classroom engaging



Straight - no door



Straight - door

**Base Shelf**  
Width: 15", 18", 24", 30", 36", 42", 48"  
Depth: 20"  
Height: 29", 37"

Shelves: Fixed and adjustable  
35 lb. to 100 lb. capacity depending on width  
Painted metal  
29"H has 1 adjustable shelf  
37"H has 2 adjustable shelves

Door: Soft close 120° European hinge  
Locking



# Base Posterboard

Illusions 2.0



**Base Posterboard Storage**  
Access: 1 side  
Width: 36"  
Depth: 20"  
Height: 29", 37"

Shelves: Fixed  
Laminate  
35 lbs. capacity

# Base Drawer

Illusions 2.0



**Base Shelf - File Drawer**



**Base Box Drawer**



**Base Box/File Drawer**



**Shelf - Box Drawer - No Doors**



**Shelf - Box Drawer - Locking Doors**

**Base Shelf - File Drawer**  
Width: 15", 18", 24", 30"  
Depth: 20"  
Height: 29", 37"

**Base Box Drawer**  
Width: 15", 18", 24", 30"  
Depth: 20"  
Height: 29", 37"

**Base Box/File Drawer**  
Width: 15", 18", 24", 30"  
Depth: 20"  
Height: 29", 37"

Drawer: Steel drawer bodies  
Full extension slides  
Locking  
Unique lock per drawer  
50 lb. capacity - box drawer  
150 lb. capacity - file drawer

Shelf: Fixed & adjustable  
Laminate & metal  
35 lbs. to 100 lbs. capacity

**Shelf - Box Drawer - No Doors**  
Width: 15", 18", 24", 30", 36", 42", 48"  
Depth: 20"  
Height: 29", 37"

**Shelf - Box Drawer - Locking Doors**  
Width: 15", 18", 24", 30", 36", 42", 48"  
Depth: 20"  
Height: 29", 37"



# Base Divided Drawer - Shelf

Illusions 2.0



Base Box Drawer - Shelf

Access: 1 side  
Width: 30", 36", 42", 48"  
Depth: 20"  
Height: 29", 37"



Base Box - File Drawer - Shelf

Doors: Locking doors  
Shelves: Fixed & adjustable  
Laminate & metal  
35 lbs. capacity  
Drawer: Steel drawer bodies  
Full extension slides  
Locking  
Unique lock per drawer  
50 lb. capacity - box drawer  
150 lb. capacity - file drawer

# Base Tray

Illusions 2.0



Base Tray Storage - No Doors

Access: 1 side  
Width: 42"  
Depth: 20"  
Height: 29", 37"



Base Tray Storage - Locking Doors

Access: 1 side  
Width: 48"  
Depth: 20"  
Height: 29", 37"

Doors: No doors or locking doors  
Tray: Translucent Grattells brand  
3" high tray (default); other sizes available  
Tray rails installed in set increments



# Base Sink

Illusions 2.0

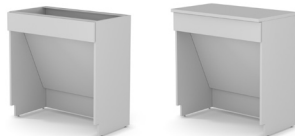


# Base Desk

Illusions 2.0



**Base Sink - Locking Doors**  
Access: 1 side  
Width: 36", 42", 48"  
Depth: 20", 24"  
Height: 24", 29", 37"



**Base Sink - ADA - No Doors**  
Access: 1 side  
Width: 36", 42", 48"  
Depth: 20"  
Height: 29", 33", 37"

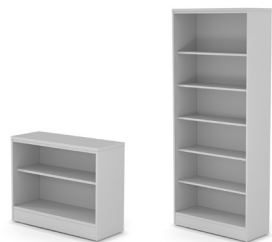
Doors: No doors or locking doors



**Base Desk**  
Access: 1 side  
Width: 30", 36", 42", 48"  
Depth: 20", 24"  
Height: 29", 33", 37"



# Illusions 2.0



### Bookcase - 1 Sided

Width: 24", 30", 36", 42", 48"

Depth: 14"

Height: 24", 29", 37", 44", 68", 76", 84"

Types: One-sided

Shelves: Fixed & adjustable

Laminate

50 lb. to 100 lb. capacity



**Bookcase - 2 Sided**

Width: 24", 30", 36", 42", 48"

NOTE: 28" W endcap bookcase (shown above right) for end-of-run applications

Depth: 28"

Height: 24", 29", 37", 44", 68", 76", 84"

Types: Two-sided

Doors: Open

Shelves: Fixed & adjustable

50 lb. to 100 lb. capacity





# Tall Shelf

Illusions 2.0

# Tall Cubby

Illusions 2.0

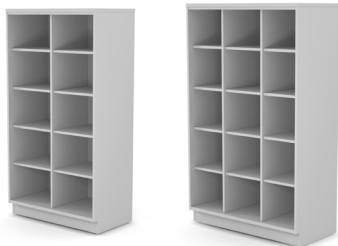


**Tall Shelf Storage - No Doors**  
Access: 1 side  
Width: 24", 30", 36", 42", 48"  
Depth: 20"  
Height: 68", 76", 84"



**Tall Shelf Storage - Locking Doors**  
Access: 1 side  
Width: 24", 30", 36", 42", 48"  
Depth: 20"  
Height: 68", 76", 84"

Doors: No doors or locking doors  
Shelves: Fixed & adjustable  
Laminate & metal  
35 lb. to 100 lb. capacity



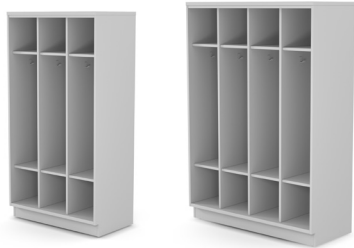
**Tall Shelf Cubby - No Doors**  
Access: 1 side  
Width: 24", 30", 36", 42", 48"  
Depth: 20"  
Height: 68", 76", 84"

Shelves: Fixed & adjustable  
Laminate & metal  
35 lb. capacity



# Tall Locker

Illusions 2.0



**Tall Locker**  
Access: 1 side  
Width: 36", 42", 48"  
Depth: 20"  
Height: 68", 76", 84"

Shelves: Fixed  
Laminate  
35 lbs. capacity

# Tall Shelf Drawer

Illusions 2.0



**Tall Shelf - Box Drawer Storage**  
Locking doors  
Access: 1 side  
Width: 24", 30"  
Depth: 20"  
Height: 68", 76", 84"

Shelves: Fixed & adjustable  
Laminate & metal  
100 lbs. capacity  
Drawer: Steel drawer bodies  
Full extension slides  
Keyed alike cylinder lock  
Unique lock per drawer  
50 lb. capacity - box drawer  
150 lb. capacity - file drawer



# Tall Wardrobe

Illusions 2.0



**Tall Wardrobe - Shelf Storage - Locking doors**  
Access: 1 side  
Width: 24", 30", 36"  
Depth: 20"  
Height: 68", 76", 84"



**Wardrobe Cabinet - Non-locking doors**  
Full width garment rod  
Access: 1 side  
Width: 24", 30", 36", 42", 48"  
Depth: 20"  
Height: 68", 76", 84"  
Shelves: Fixed & adjustable  
Laminate & metal  
Hold up to 75 lbs.

# Tall Tray

Illusions 2.0



**Tall Tray and Shelf Storage - No Doors**  
Access: 1 side  
Width: 42"  
Depth: 20"  
Height: 68", 76", 84"



**Tall Tray and Shelf Storage - Locking Doors**  
Access: 1 side  
Width: 48"  
Depth: 20"  
Height: 68", 76", 84"  
Shelves: Fixed & adjustable  
Laminate & metal  
100 lbs. capacity  
Trays: Translucent Grathells brand  
3" high tray (default); other sizes available  
Tray rails installed in set increments



# Wall Hung Shelf

Illusions 2.0



**Wall Hung Shelf - No Doors & With Doors**  
Access: 1 side  
Width: 15", 18", 24", 30", 36", 42", 48"  
Depth: 14"  
Height: 21", 29"

Doors: No doors or locking doors  
Shelves: Adjustable  
Laminate & metal  
35 lb. to 100 lb. capacity

# Hutch

Illusions 2.0



**Hutch-Shelf - No Doors & With Doors**  
Access: 1 side  
Width: 24", 30", 36", 42", 48"  
Depth: 14"  
Height: 39", 47"

Doors: No doors or locking doors  
Shelves: Adjustable  
Laminate & metal  
35 lb. to 100 lb. capacity



# Monitor Hutch

Illusions 2.0



**Monitor Hutch - No Doors**  
Access: 1 side  
Width: 72", 84", 96"  
Depth: 14"  
Height: 39", 47"

# Hutch Learning Wall

Illusions 2.0



**Hutch Learning Wall - No Doors**  
Access: 1 side  
Width: 72", 84", 96"  
Depth: 20"  
Height: 39", 47"

Shelves: Adjustable  
Laminate & metal  
35 lb. to 100 lb. capacity



# Monitor Hutch Learning Wall

Illusions 2.0

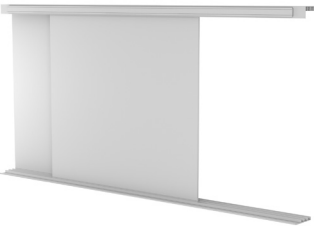
# Sliding Board Learning Wall

Illusions 2.0



**Monitor Hutch Learning Wall - No Doors**

Access: 1 side  
Width: 72", 84", 96"  
Depth: 20"  
Height: 39", 47"



**Sliding Board Learning Wall**

Access: 1 side  
Width: 72", 84", 96", 108", 126", 144", 168", 192"  
Depth: 6"  
Height: 39", 47"

3 track rail system  
Cork tack rail on top of unit  
Connects to learning wall hutch and  
base storage  
Map hook  
White porcelain steel markerboards

Fillers are available to add depth or width to your Illusions 2.0 configuration.



# Spanning worksurface & backsplash

Illusions 2.0



**Worksurface Bridge**  
Access: 1 side  
Width: 30", 36", 42", 48"  
Depth: 20", 24", 25"  
Height: 1"



**Worksurface Backsplash**  
Access: 1 side  
Width: 48"-120", 3" increments  
Depth: 1"  
Height: 4"



**Worksurface Spanning**  
Access: 1 side  
Width: 48"-120", 3" increments  
Depth: 20", 24", 25"  
Height: 1"





# Side Fillers

Illusions 2.0



**BASE STORAGE  
SIDE FILLER**

**TALL STORAGE  
SIDE FILLER**

# Front Fillers

Illusions 2.0



**BASE STORAGE FRONT FILLER**

(Image on right shows the filler in application)

**Base Side Filler**  
Width: 4"  
Depth: 29", 37"

**Tall Side Filler**  
Width: 24", 30", 36", 42", 48"  
Depth: 24"  
Height: 68", 76", 84"

**Base Front Filler**  
Width: 12"  
Depth: 0.75"  
Height: 29", 37"

# Base Corner Filler

Illusions 2.0



**Base Corner Filler**  
Access: 1 side  
Width: 24", 30"  
Depth: 20", 24"  
Height: 29", 37"  
Matching width worksurface with or without backsplash

# Wall Hung Corner Filler

Illusions 2.0



**Wall Hung Corner Filler - No Doors**  
Access: 1 side  
Width: 18"  
Depth: 14"  
Height: 21", 29"







# Sheerline

## Strong • Smart • Stylish

Sheerline storage blends wood and steel for an urban, industrial look that complements any classroom design. Smooth steel perimeter frames and shelves stand up to the most demanding environments, including science spaces. Doors and drawers are engineered for superior utility and durability. Large, industrial casters make pieces easy to move yet incredibly stable.





# Why Sheerline?

Strong • Smart • Stylish



## MAKERSPACE TOUGH

Metal in all the right places stands up to students’ abuse, while maple block helps dampen sounds in noisy environments.



## CHOOSE YOUR SURFACE

Elementary spaces call for HPL tops. High school areas need specialized materials – phenolic for chemicals or maple block for building. Sheerline delivers it all.

Eliminate cumbersome cords streaming from wall outlets. Customize your Sheerline units with worksurface-height power modules to empower students.



## MORE THAN STORAGE

Workstations and presentation carts round out the portfolio, so students and teachers can cluster around oversized tables for project work.



## BIGGER IS BETTER

Sheerline and complementary Fleetwood tables feature industrial 5” diameter casters that handle excess weight with ease.



# Shelf - Straight

Sheerline



**Shelf Storage - Straight - Single Sided**  
Width: 48"  
Depth: 22"  
Height: 34.25", 60", 72"  
Doors: Open or with locking doors  
Shelves: Metal  
100 lbs. capacity  
Frame: Fully welded steel perimeter frame

**Shelf Storage - Straight - Double Sided**  
Width: 48"  
Depth: 22"  
Height: 34.25"





# Drawer

Sheerline



**Drawer Storage - Single Sided**  
Width: 48"  
Depth: 28"  
Height: 34.25"

Drawers: 5 non-Locking Drawers  
Frame: Fully welded steel perimeter frame

# Tray

Sheerline



**Tray Storage - Single Sided - No Doors**  
Width: 42.5"  
Depth: 22"  
Height: 44"

Frame: Fully welded steel perimeter frame  
Trays: Translucent Gratnells trays & rails



# Wardrobe

Sheerline



**Wardrobe Storage - Single Sided - Locking Doors**

Width: 48"  
 Depth: 22"  
 Height: 72"

Shelves: Fixed & adjustable  
 Metal  
 100 lbs. capacity  
 Frame: Fully welded steel perimeter frame

# Demonstrator Workstation

Sheerline



**Shelf and Drawer Storage - Single Sided - Locking Doors and Drawers**

Demonstration Mirror  
 Width: 60"  
 Depth: 24"  
 Height: 34.25"

Shelves: Adjustable  
 Metal  
 100 lbs. capacity  
 Frame: Fully welded steel perimeter frame  
 Positionable mirror



# Workstation

Sheerline



**Workstation - Shelf**  
No doors or with doors  
Width: 50", 60"  
Depth: 24", 30"  
Height: 34.5"

Access: 1-side, 2-sided  
Doors: Locking  
Shelves: Adjustable  
Metal  
100 lbs .capacity  
Frame: Fully welded steel perimeter frame

# Project Cart

Sheerline



**Project Cart -Locking Door and Drawer**  
Width: 42"  
Depth: 20"  
Height: 37"

Power: With & without power  
Shelves: Adjustable  
Metal  
100 lbs. capacity  
Frame: Fully welded steel perimeter frame





# Library 2.0

## Solid • Sharp • Studious

Not just for traditional libraries, this shelving, desk and mobile storage collection is also perfect for classrooms, media centers, common areas and administrative offices. It coordinates visually and functionally with other Fleetwood furniture.





# Why Library 2.0?

Solid • Sharp • Studious



**NOT JUST FOR LIBRARIES ANYMORE**  
Fleetwood’s library solutions also perform well in media centers, common areas and administrative offices.



**MODULAR MAXIMIZES FLEXIBILITY**  
Banish obsolescence with flexible, modular solutions that can be quickly reconfigured on-site without having to pull carpets or repaint.

**BEAUTIFULLY DIVIDED OR UNITED**  
Our stand-alone units provide easy setup and reconfiguration. Our add-on bookcases provide stability and permanence in library environments. Our mobile bookcases optimize flexibility.



**CLEAN LINES ELEVATE ATMOSPHERE**  
When budgets prohibit millwork, don’t settle for clunky, pre-built products. Fleetwood’s transaction system provides clean lines that mimic built-ins.



# Build-up starter bookcase

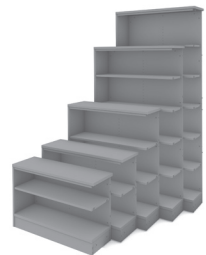
Library 2.0



Single-sided build-up starter bookcase



Double-sided build-up starter bookcase



## Build-up starter bookcases

Available sizes:

Width: 24", 30" 36"

Depth: 12.5", 24"

Height: 24", 29" 37", 44", 68", 76", 84"

Access: Single-side & double sided

Shelves: Adjustable

Laminate shelf - weight capacity 100 lbs.

Metal shelf material - weight capacity 100 lbs

Display metal shelf - weight capacity 100 lbs.

Shelves adjust on 32mm spacing

# Build-up adder bookcase

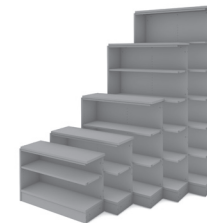
Library 2.0



Single-sided build-up adder bookcase



Double-sided build-up adder bookcase



## Build-up adder bookcases

Available sizes:

Width: 24", 30" 36"

Depth: 12.5", 24"

Height: 24", 29" 37", 44", 68", 76", 84"

Access: Single-side & double sided

Shelves: Adjustable

Laminate shelf - weight capacity 100 lbs.

Metal shelf material - weight capacity 100 lbs

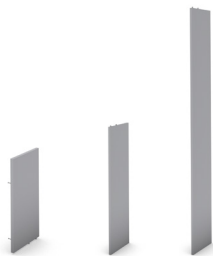
Display metal shelf - weight capacity 100 lbs.

Shelves adjust on 32mm spacing



# Build-up bookcase end-of-run panel

Library 2.0



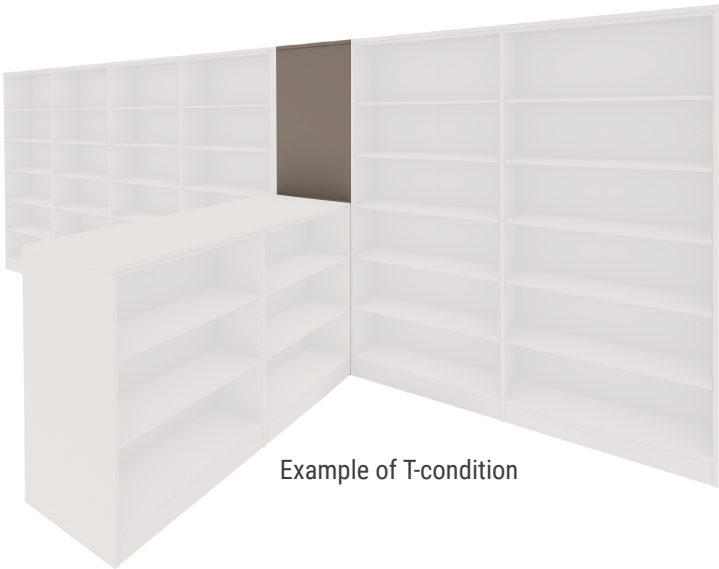
**Build-up bookcase end-of-run panel**  
Available sizes:  
Width: 12.5", 24"  
Depth: .75"  
Height: 24", 29", 37", 44", 68", 76", 84"

# Build-up bookcase filler

Library 2.0



12.5"W and 24"W fillers



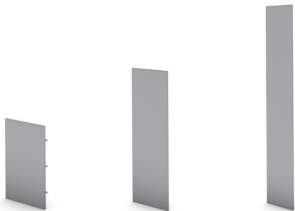
Example of T-condition



Bookcase with filler on right side



**Build-up bookcase filler kit**  
Available sizes:  
Width: 12.5", 24"  
Depth: 12.5"  
Height: 24", 29", 37", 44", 68", 76", 84"



**Build-up bookcase filler**  
Available sizes:  
Width: 12.5", 24"  
Depth: .75"  
Height: 24", 29", 37", 44", 68", 76", 84"



# Build-up bookcase kit

Library 2.0



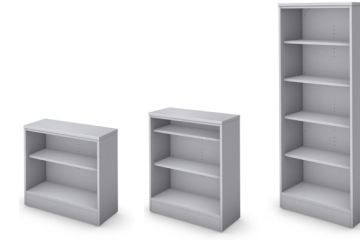
## Build-up bookcase kit

Available sizes:  
Width: 24", 30", 36"  
Depth: 12.5", 24"  
Height: 24", 29", 37", 44", 68", 76", 84"

Types: Single-side & double sided  
Shelves: Adjustable  
Laminate shelf - weight capacity 100 lbs.  
Metal shelf material - weight capacity 100 lbs.  
Display metal shelf - weight capacity 100 lbs.

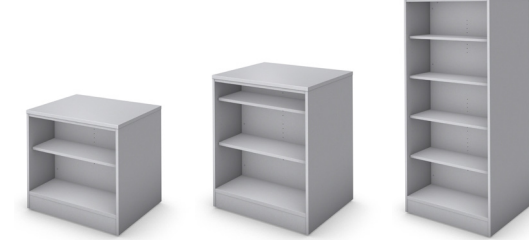
# Assembled bookcase (stationary and mobile)

Library 2.0



## Illusions 2.0 single-sided bookcases (stationary)

Access: 1 side  
Available sizes:  
Width: 24", 30", 36", 42", 48"  
Depth: 14"  
Height: 24", 29", 37", 44", 68", 76", 84"



## Illusions 2.0 double-sided bookcases (stationary and mobile)

Access: 2 side  
Available sizes:  
Width: 24", 30", 36", 42", 48"  
Depth: 28"  
Height: 24", 29", 37", 44", 68", \*76", \*84"  
\*mobile not available on 76"h and 84" h



# Mobile Book Truck

Library 2.0



**Mobile Book Truck**  
Shelves: Fixed (sloped)  
Laminate  
100 lbs capacity  
Width: 36"  
Depth: 18"  
Height: 42"

# Mobile Book Browser

Library 2.0



**Book Browser Storage - 4 Book Bins**  
8 Cubbies - Lower  
Width: 30"  
Depth: 30"  
Height: 31"



**Book Browser Storage - 6 Book Bins**  
6 Cubbies - Lower  
Width: 41.5"  
Depth: 28.75"  
Height: 26"





# Carrel

## Library 2.0



**Starter unit**  
• 38", 48" high starter shown  
• Starters may be used independently



**Adder unit**  
• 38", 48" high adder shown  
• Adder cannot stand alone







# Transaction Desk System

## Library 2.0

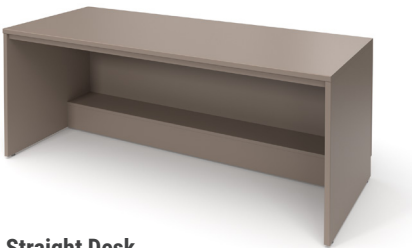
The modular transaction desk system provides easy planning logic and creates a clean, crisp visual. At home in the library, administration areas or anywhere else a greeting space is desired, Fleetwood's transaction desk is compatible with Designer 2.0 and Illusions 2.0 storage solutions to create a cohesive look throughout school environments.





# Transaction Desk System

Library 2.0



**Straight Desk**  
Height: 30"



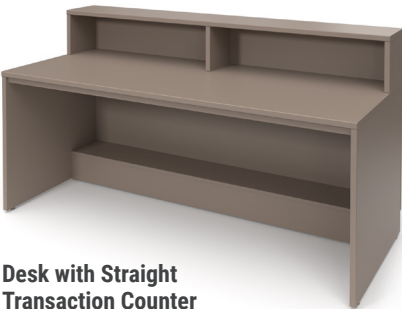
**Straight Transaction Counter**  
Height: 10"  
(worksurface not included)



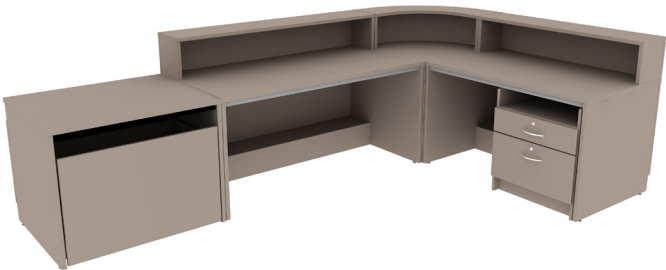
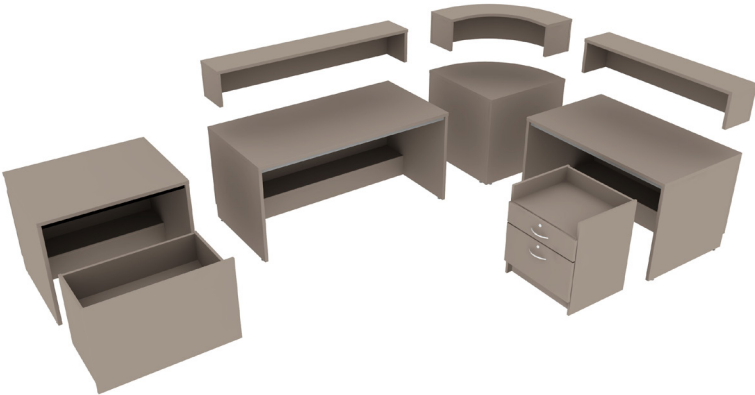
**Curved Transaction Counter**

**Transaction counters, corner fillers, under desk storage, book returns, book carts**

Available sizes:  
48" to 84"W x 30"D x 30"H desks  
30"W x 30"D x 30"H corner fillers  
23"W x 20"D x 26"H under worksurface storage  
24" to 48"W x 10"D x 10"H transaction counters



**Desk with Straight Transaction Counter**





# Transaction Desk System

## Library 2.0



**Shelf - No door**  
Width: 36"  
Depth: 30"  
Height: 29"



**Shelf - Locking doors**  
Width: 36"  
Depth: 30"  
Height: 29"



**Lateral File**  
Width: 36"  
Depth: 30"  
Height: 29"



**Corner Filler - Closed front or open front**  
Width: 30"  
Depth: 30"  
Height: 29"



**Shelf - Fixed - No doors Under Worksurface**  
Width: 23"  
Depth: 20"  
Height: 26"



**Cabinet - Locking doors - No middle shelf Under Worksurface**  
Width: 23"  
Depth: 20"  
Height: 26"



**Drawer - locking Under Worksurface**  
Width: 23"  
Depth: 20"  
Height: 26"



**Book Return**  
Width: 36"  
Depth: 30"  
Height: 29"



**Book Drop Cart**  
Width: 32.5"  
Depth: 20"  
Height: 26"







# Harmony

Inclusive • Secure • Attuned

Give aspiring musicians storage that's specially made for their craft. Tell us the quantity and types of instruments you want to accommodate, and we'll do the rest. Harmony also includes garment, printed music, folio, high-density and podium solutions, so you can equip your entire music room in style.





# Why Harmony?

Inclusive • Secure • Attuned



## HOLISTIC SOLUTIONS FOR THE BAND

Band rooms can be chaotic, so let Harmony bring order with its comprehensive, integrated offering that supports instruments, paper, garments, and students.



## VISIBLE OR NOT. OPEN OR LOCKED

Harmony offers instrument storage with single or multiple compartments. Units can be open or have full-length grille or laminate doors. Grille compartmentalized doors are also available.

## YOU TELL. WE PLAN.

Figuring out which storage supports what instrument can be challenging. Let our design staff take on the task for you.





# Instrument

Harmony

# Garment

Harmony



**Instrument Storage**  
27"W x 84"H x 20"D  
27"W x 84"H x 30"D  
27"W x 84"H x 40"D  
48"W x 84"H x 30"D

Access: 1-side  
Doors: Open or hasp doors  
Shelves: ABS plastic wrapped shelves  
Shelves are adjustable in units without doors  
and with full length doors



**Garment Storage**  
27"W x 84"H x 30"D  
48"W x 84"H x 30"D

Access: 1-side  
Doors: Open or hasp doors  
Shelves: ABS plastic wrapped shelves  
Garment rod



# Mobile Instrument

Harmony



**Mobile Bass Storage**  
Width: 61"  
Depth: 26"  
Height: 60.5"  
Holds 3 instruments



**Mobile Cello Storage**  
Width: 75"  
Depth: 22"  
Height: 75"  
Holds 6 instruments



**Mobile Violin/Viola Storage**  
Width: 61"  
Depth: 26"  
Height: 60.5"  
Holds 16 instruments

Carpeted edge in dark gray  
Holds instrument with or without case

# Folio

Harmony



**Folio - 2 columns**  
Access: 1-side  
Width: 29"  
Depth: 18"  
Height: 50"



**Folio - 3 columns**  
Width: 42"  
Depth: 18"  
Height: 50"

Hardboard shelves - 3 lb. capacity  
Additional storage on bottom  
Metal shelf security strip



# Podium

Harmony



**Podium**

Depth: 38"  
Height: 48"  
Width: 43"

Carpeted platforms in dark gray  
Main platform height 6"  
Steel safety rail

# Music Storage System

Harmony



**Music Storage System**

Depth: 44"  
Height: 92"  
Width: 16"

Identification holder & cover  
Right or left access option  
Load rated pull in black  
Wall mountable frame and hardware kit (required, order separately)  
Shelves: White storage shelves - 2 fixed, 4 adjustable  
32mm spacing



# Filler

Harmony



**Filler - Corner**  
30"W x 84"H x 30"D  
40"W x 84"H x 40"D



**Filler - End**  
12"W x 84"H x 20"D  
12"W x 84"H x 30"D  
12"W x 84"H x 40"D



**Filler - Top**  
27"W x 0.75"H x 10"D  
27"W x 0.75"H x 20"D  
48"W x 0.75"H x 10"D



**Filler - Side**  
27"W x 84"H x 10"D  
27"W x 84"H x 20"D  
48"W x 84"H x 10"D

Includes hardware to attach to adjacent cabinets  
Color matched adjacent cabinets





For help creating your effective learning environment,  
contact us at 800.257.6390, 616.396.1142 or [sales@fleetwoodfurniture.com](mailto:sales@fleetwoodfurniture.com).  
Learn more about Fleetwood at [fleetwoodfurniture.com](http://fleetwoodfurniture.com).

