

The cover features a light wood grain pattern in the top-left quadrant, a dark teal solid color in the bottom-left quadrant, and a dark brown wood grain pattern in the bottom-right quadrant. A large, solid red-orange shape occupies the top-right quadrant. A light gray diamond shape is centered, overlapping the wood grain and teal areas.

Surface Materials Guide

2020

Fleetwood®

FINISHES

We take great pride helping you make your school unique and appealing. Our newest standard laminates, paints and fabrics were carefully selected to provide fresh colorways that stimulate engagement. We also team with top surface material manufacturers to create your personal statement from their extensive standard palettes. Or, for functionality and durability, choose markerboard, phenolic resin or maple block options.

LAMINATE GRADING SYSTEM

All Fleetwood storage products, and desks and tables are available in five grades of laminate with the exception of our wood frame science tables. The base prices in this price list are based on Grade 1 laminates, unless the product description calls out a specific laminate, like black HPL, black chemical resistant HPL, black chemical resistant phenolic resin or maple block. The five laminate grades are shown below.

For pricing on G2 through G5 to be applied, specify a minimum of 25 units.

	Grade 1 (G1)	Grade 2 (G2)	Grade 3 (G3)	Grade 4 (G4)	Grade 5 (G5)**
Laminate Type	Thermally Fused Laminate (TFL)	Thermally Fused Laminate (TFL)	High Pressure Laminate (HPL)	High Pressure Laminate (HPL)	High Pressure Laminate (HPL)
Finish	Sunbeam Trytoo Savatre Aqua Lagoon Island Cafe Sienna Summer Vacation White Gray Wrought Iron Black Cavalcade South Etched Gray Grey Matrix Charcoal Matrix Fusion Maple Light Oak Honey Maple Oiled Cherry	Mistral Esterel	Sunbeam Trytoo Savatre Aqua Lagoon Island Cafe Sienna Summer Vacation White Gray Wrought Iron Black Cavalcade South Etched Gray Grey Matrix Charcoal Matrix Fusion Maple Light Oak Honey Maple Oiled Cherry White Marker Board*	Mistral Esterel	Any standard Wilsonart HPL laminate in either a #38 Fine Velvet Texture or #60 Matte finish. Specify desired Wilsonart laminate color and finish level (#38 or #60). #38 Fine Velvet Texture - A smooth textured finish with moderate reflective value. Recommended for horizontal and vertical applications. #60 Matte - Textured finish with moderate reflective quality. Recommended for horizontal and vertical applications. www.wilsonart.com/finish-options www.wilsonart.com/laminate/design-library

*If markerboard is desired on cabinet exterior, please call for quote. Another laminate will be used on interiors, shelves, etc.

** Fleetwood standard edge band options are automatically paired with G5 laminate materials.

Contact your Fleetwood Project Coordinator for laminate edge band color matching options.

LAMINATES (All grade 1 TFL and grade 3 HPL unless noted)



Sunbeam



Mistral* (Grade 2 & 4)



Esterel* (Grade 2 & 4)



Trytoo Savatre



Aqua Lagoon



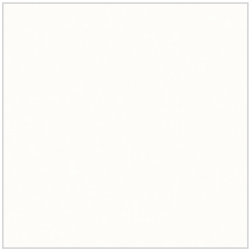
Island



Cafe Sienna



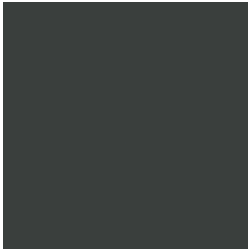
Summer Vacation



White



Gray



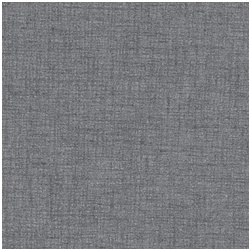
Wrought Iron



Black



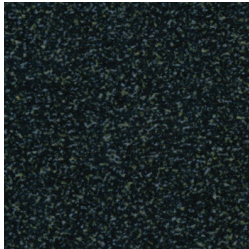
Cavalcade South



Etched Gray



Grey Matrix



Charcoal Matrix



Fusion Maple



Light Oak



Honey Maple

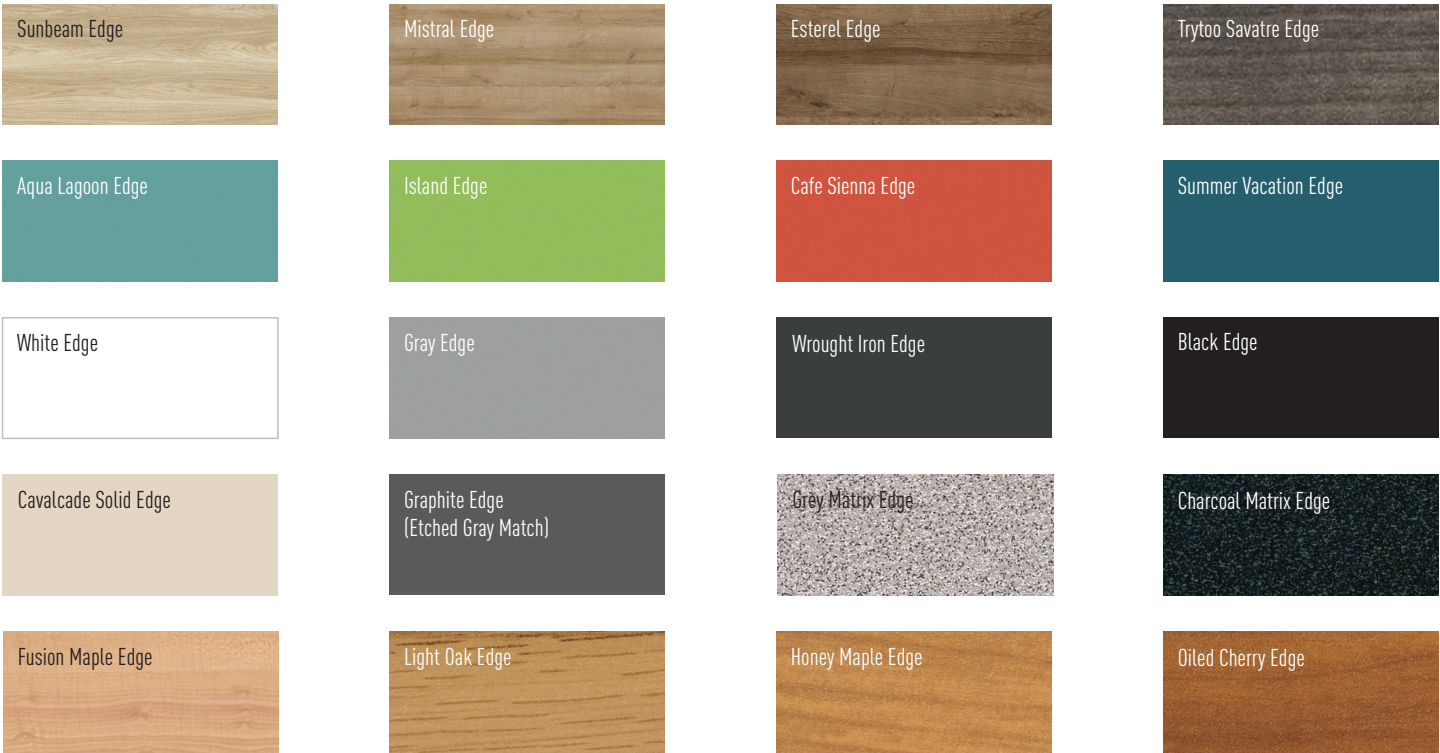


Oiled Cherry

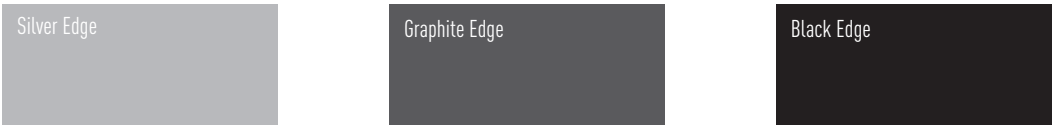
* TFL laminate is slightly textured and has slight upcharge

EDGE BANDS

LAMINATE MATCHED EDGE BANDS



PAINT MATCHED EDGE BANDS



ACCENT EDGE BANDS



SPECIALTY WORK SURFACES

White Marker Board
We recommend using an edge band color that matches the frame color

Black High Pressure Laminate (HPL) and
Black Chemical Resistant HPL

Black Chemical Resistant Phenolic Resin

Solid Maple Block

PAINTS

Silver Paint

Graphite Paint

Black Paint

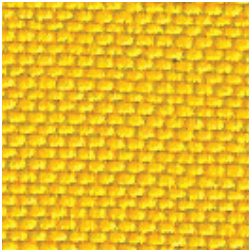
RECOMMENDED COLOR COMBINATIONS

<div>Sunbeam Laminate</div> <div>Silver Paint</div> <div>Sunbeam Edge</div>	<div>Mistral Laminate</div> <div>Graphite Paint</div> <div>Mistral Edge</div>	<div>Esterel Laminate</div> <div>Graphite Paint</div> <div>Esterel Edge</div>	<div>Trytoo Savatre Laminate</div> <div>Black Paint</div> <div>Trytoo Savatre Edge</div>
<div>Aqua Lagoon Laminate</div> <div>Graphite Paint</div> <div>Aqua Lagoon Edge</div>	<div>Island Laminate</div> <div>Graphite Paint</div> <div>Island Edge</div>	<div>Cafe Sienna Laminate</div> <div>Graphite Paint</div> <div>Cafe Sienna Edge</div>	<div>Summer Vacation Laminate</div> <div>Black Paint</div> <div>Summer Vacation Edge</div>
<div>White Laminate</div> <div>Silver Paint</div> <div>White Edge</div>	<div>Gray Laminate</div> <div>Graphite Paint</div> <div>Gray Edge</div>	<div>Wrought Iron Laminate</div> <div>Silver Paint</div> <div>Wrought Iron Edge</div>	<div>Black Laminate</div> <div>Graphite Paint</div> <div>Black Edge</div>
<div>Cavalcade South Laminate</div> <div>Graphite Paint</div> <div>Cavalcade Solid Edge</div>	<div>Etched Gray Laminate</div> <div>Graphite Paint</div> <div>Graphite Edge</div>	<div>Grey Matrix Laminate</div> <div>Graphite Paint</div> <div>Grey Matrix Edge</div>	<div>Charcoal Matrix Laminate</div> <div>Black Paint</div> <div>Charcoal Matrix Edge</div>
<div>Fusion Maple Laminate</div> <div>Silver Paint</div> <div>Fusion Maple Edge</div>	<div>Light Oak Laminate</div> <div>Graphite Paint</div> <div>Light Oak Edge</div>	<div>Honey Maple Laminate</div> <div>Graphite Paint</div> <div>Honey Maple Edge</div>	<div>Oiled Cherry Laminate</div> <div>Black Paint</div> <div>Oiled Cherry Edge</div>

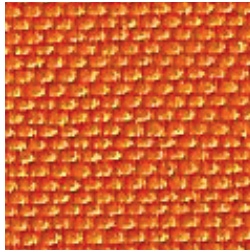
This brochure contains printed representations of laminate, edge, and paint colors.
Colors may differ from actual product, please refer to actual sample before ordering.

FABRICS

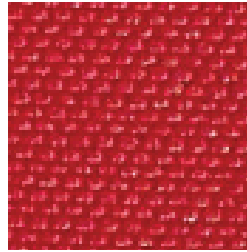
SOFT ROCK FABRICS (SILVERTEX™)



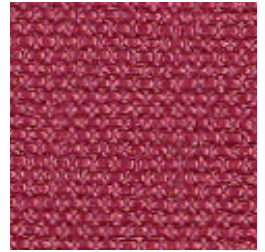
Limon Cello



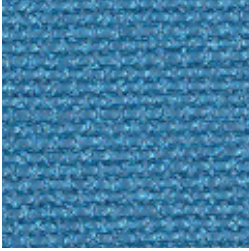
Bazaar



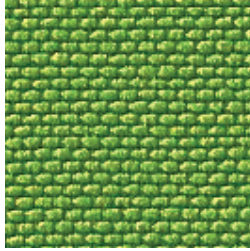
Imperial



Borscht



Torquoise



Creme DeMenthe



Sterling

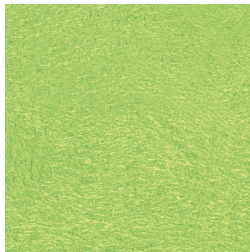


Carbon

ROCK BEAN BAG FABRICS



Microsuede Teal



Microsuede Lime



Microsuede Graphite Grey



Microsuede Cranberry Red

OUR SOLUTIONS



TABLES & DESKS



STORAGE



SEATING



WHITEBOARDS

For help creating your effective learning environment,
contact us at 616.396.1142 or sales@fleetwoodfurniture.com

Fleetwood®