

Illusions 2.0

Planning Overview



Fleetwood®
Creating effective learning environments™

Tables & Desks | Storage | Seating | Accessories

ILLUSIONS 2.0 PLANNING OVERVIEW

Illusions 2.0, part of Fleetwood’s modular 2.0 Storage Collection platform, works seamlessly with Designer 2.0 and all Fleetwood tables. Illusions 2.0 supports both perimeter storage and space division planning. It provides a cost-effective alternative to built-ins, but it offers more short and long-term flexibility because of its wide range of components, quick installation, and ability to be moved or rearranged post-installation. Because it can be moved, Illusions 2.0 also supports deep cleaning during school breaks. Illusions 2.0 offers a nearly endless combination of storage to fit the needs of any education institution and can also expand into other fields outside of education.



COMPONENTS

Modular Illusions 2.0 components are dimensioned to work in harmony together. While many varieties of components exist, the basic categories are highlighted below.



MODULAR COMPONENTS

- A - Base cabinet
- B - Base corner filler
- C – Spanning worksurface
- D – Spanning backsplash
- E – Overhead storage unite
- F – Hutch
- G – Overhead corner filler
- H – Tall storage
- I – Side filler
- J– Tall (side) filler

All of these components will be described in more detail later in this guide.



DIMENSIONAL LOGIC

Illusions 2.0 cabinets come in a variety of widths, heights, and styles to support many of the storage needs found in the classroom.

WIDTH LOGIC

Illusions 2.0 components support 3” and 6” wide planning modules with 15”W to 48”W components. This design allows almost wall-to-wall fit up. This logic parallels Designer 2.0 which offers 30”-48”W components in 6” width modules for most components.



Widths: 15”, 18”, 24”, 30”, 36”, 42”, 48”

HEIGHT LOGIC

Illusions 2.0 components are in heights from 29”H to 84”H for most components. A few components, like bookcases, also are available 24”H. Base storage units, which accept worksurfaces, are 29”H and 37”H, and align with Fleetwood table heights. The 29”H, 37”H, 44”H and 68”H align with Designer 2.0, so these platforms work seamlessly together.



Heights: 29”, 37”, 68”, 76”, 84”



Storage hutches, monitor hutches and marker-board components stack on top of base storage units (with worksurfaces). Different combinations of base and stacked storage units result in 68”H, 76”H and 84”H assemblies. The various combinations are called out below:

Learning Wall heights: 68”, 76”, 84”

BASE STORAGE HEIGHT (WITH WORKSURFACE)	HUTCH HEIGHT	FINISHED HEIGHT
29”H	39”H	68”H
37”H	39”H	76”H
29”H	47”H	76”H
37”H	47”H	84”H



Depths: 14”, 20”, 24”

DEPTH LOGIC

Base cabinets and tall storage are 20”D. Bookcases, hutches and overhead storage are 14”D. The 14”D bookcases and hutches perform excellently in tight spaces. The 20”D cabinets support classroom space compression and align with Designer 2.0 depths to further enhance compatibility.



14”D bookcase with built-in top



20”D base cabinet cabinet with 20”D worksurface and no filler



20”D base cabinet with side filler to support 24”D or 25” D worksurface

If a deeper worksurface solution is desired, the application needs to accommodate plumbing or electrical in the back of the cabinet, order a deeper worksurface (24”D flush-front and 25”D drip-edge options). If using the 24”D or 25”D worksurface, the back of the worksurface will overhang the back of the storage by 4”. This creates a fully open 4”D chase that accommodates piping, HVAC, or cable routing.

To cover the chase opening at the end-of-run, use a 4” filler panel. Two options are available – a base side filler that attaches to the end-of-run base cabinet or a tall cabinet side filler that attaches to the end-of-run tall cabinet. See the filler section for more information. If using the 25”D worksurface, a 1” drip-edge will extend beyond the cabinet face.

The 14”D hutches may either align with the back of the worksurface or the front of a 20”D or 24”D worksurface. Side fillers are available via specials to conceal gaps if the hutch is used flush with the front of the worksurface.

When space is very tight and only shelving is needed, consider using all 14”D bookcases and hutches.



14”D bookcase Hutch on top of 14”D bookcase



20”D base cabinet with no filler Hutch on top of 20”D cabinet



24”D base cabinet with base side filler. Hutch on top of 24”D cabinet



20”D base cabinets and tall cabinets with hutch pulled forward to be flush with the front

CONSTRUCTION LOGIC

ASSEMBLY

- All modular cases are assembled. They can be used independently or in mass.
- All cases are finished on all four exterior sides and on interiors.
- All cases are .75" thick TFL laminated particleboard with 1mm matching edgebands. All worksurfaces and tops are 1" thick laminate with 3mm edgeband. If below 44"H, HPL is used. If above 44"H, TFL is used.
- All cases have camlock construction.
- All units feature a 4" high toe kick, which aligns with the height of Designer 2.0 casters to achieve a cohesive, unified look. Cases have 3.5" levelers with optional casters (see Mobility below).
- Most cabinets have counterbalance weights.
- Most cabinets have false bottoms. The false bottoms have two rear holes so levelers can be easily adjusted while the unit is against the wall. Front levelers are accessed via the gap between the base of the cabinet and the floor.
- Through bolt connectors ship with each case at no additional charge for the field installation. Optional quick-connect brackets are also available to secure base cabinets together (see below).
- Cases may have matched-width tops, which are factory assembled; or spanning worksurfaces, which are field installed. Backsplashes have parallel logic. Worksurfaces must always be ordered.
- Cases have metal stretchers at the top in both the front and back. The front stretcher also serves as a decorative reveal.
- Adjustable shelves, trays, etc. ship installed on the units to make installation easy and quick.
- All installation hardware is shipped with the units except for unique code-compliant brackets to attach overhead storage units to walls.
- Based on local codes, additional wall or floor attachment may be required.

MOBILITY

Illusions 2.0 offers two mobility options. 3.5" high levelers are standard in the base unit. These units can be easily moved with a dolly. If you desire more agility, select a caster/leveler combo solution. Hidden casters allow units to roll to the installation destination without the help of skilled labor. After being placed, set the case to its final height using levelers. Casters remain on the unit to accommodate future moves or deep cleaning.

QUICK CONNECT FOR CASES

While through bolts are provided to connect units, Fleetwood also offers its optional patented quick-connect brackets which work with all base cabinets. The brackets cannot hold a cabinet's suspended weight, but they quickly and easily locate and align units.

PULL HARDWARE

Illusions 2.0 and Designer 2.0 offer the same pull and hinge options for aesthetic compatibility of the two lines.



SETTING IDEAS



14" deep bookcases team with a 14" deep media hutch for a space-saving solution.



Wall-hung overhead storage with 20"D base cabinet with 24"D base sink with ADA access.



Media displays, markerboards and analog storage solutions combine to provide a multi-dimensional classroom solution.



A wide variety of storage units come together to create a unique storage wall in this art room environment.



20"D base cabinets and 14"D monitor and shelving hutch.



14"D and 20"D storage are teamed together, resulting in easy-access storage with generous worksurface areas.



20"D base cabinets with 20"D learning wall monitor hutch and shelving hutch. Markerboards on tracks complete application.



Illusions 2.0 base desks join with tall storage to create great individual focus areas for students away from normal classroom activities.

BASIC APPLICATION LOGIC



FREESTANDING OR ATTACHED

Depending on the desired level of permanence, Illusions 2.0 can function totally freestanding due to its ample counterbalance system and weight-bearing capabilities, utilize both freestanding and wall-hung components, or bolt to floors and walls to comply with geographical code regulations.



BASIC APPLICATION LOGIC

Illusions 2.0 works in multiple settings. Use it for perimeter applications or space division. Select simple, full-storage options or high-tech educational aids. Illusions 2.0 is at home in either expansive wall-to-wall settings or tight, compressed spaces.



PERIMETER-BASED STORAGE

Illusions 2.0 works like built-in cabinetry, but it reduces installation cost and time, plus it gives you long-term flexibility. Use the space efficient 20”D worksurfaces with 20”D storage or more traditional 24”D or 25”D worksurfaces with storage and fillers to create custom looks.

While traditional built-ins usually only offer shelves with doors, Illusions 2.0 wide breadth of line also provides cubby, drawer, tray, and other storage options.



STORAGE USED AS SPACE DIVISION

Create semi-permanent room division where Illusions 2.0 either touches or stands independent from the walls. Change your mind? Just elevate the levelers and use concealed casters to easily roll Illusions 2.0 to its next location. If a quick-change space division solution is desired, consider Illusions 2.0 compatible Designer 2.0.



LEARNING WALL LAYERED APPROACH

Place display monitors, markerboards, and storage in one easy to access unit that optimizes teaching methods and floor space. Objects tuck efficiently behind sliding boards for easy access without clutter.

Because base cabinets can be 29” or 37” high, both kindergarten and high school students can comfortably reach markerboards. Media hutches work with 14” or 20” deep base storage.



SPACE COMPRESSION

As classroom sizes shrink, employ Illusions 2.0 to maximize vertical and horizontal real estate. Units reach up to 84” high and can be as narrow as 14” deep. This allows storage and media to go on one wall and frees up crucial wall space for other uses. It also opens up aiseways.



TECHNOLOGY FOR GROUP WORK

Maximize flexibility as students shift between lecture and project work. After teacher-led instruction or demonstration, students can shift their tables to the digital display to enable teamwork. If they need markerboards, they can either use Pages™ markerboard system or the backs of Designer 2.0 tall cabinets.

PRICING OVERVIEW

Illusions 2.0 typically runs 20 to 40% less than built-in solutions depending on geographic location, which impacts material costs and labor.

The most economical solution is basic 14”D bookcase and hutch solutions. 20”D base cabinets, 20”D tall storage and 14”D hutches is the second most economical. As functionality increases, pricing will also, but many times the ratio to built-in equivalent solutions improves as items like cubbies, trays and technology are incorporated into the overall solution. To provide some guidance, several different 12”W configurations are presented below with estimated customer purchase overall price and customer price per lineal foot.



List Price: \$6,840
Estimated Customer Total Price: \$4,788
Estimated Customer Price by Lineal Foot: \$399



List Price: \$7,224
Estimated Customer Total Price: \$5,057
Estimated Customer Price by Lineal Foot: \$422



List Price: \$7,668
Estimated Customer Total Price: \$5,368
Estimated Customer Price by Lineal Foot: \$448



List Price: \$7,796
Estimated Customer Total Price: \$5,458
Estimated Customer Price by Lineal Foot: \$455



List Price: \$8,178
Estimated Customer Total Price: \$5,725
Estimated Customer Price by Lineal Foot: \$478



List Price: \$8,322
Estimated Customer Total Price: \$5,826
Estimated Customer Price by Lineal Foot: \$486



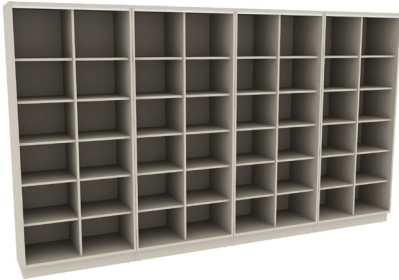
List Price: \$8,408
Estimated Customer Total Price: \$5,886
Estimated Customer Price by Lineal Foot: \$491



List Price: \$8,696
Estimated Customer Total Price: \$6,088
Estimated Customer Price by Lineal Foot: \$508



List Price:\$11,202
Estimated Customer Total Price: \$7,842
Estimated Customer Price by Lineal Foot: \$654



List Price: \$8,984
Estimated Customer Total Price: \$6,289
Estimated Customer Price by Lineal Foot: \$525



List Price: \$8,990
Estimated Customer Total Price: \$6,293
Estimated Customer Price by Lineal Foot: \$525



List Price: \$12,670
Estimated Customer Total Price: \$8,869
Estimated Customer Price by Lineal Foot: \$740



List Price: \$9,018
Estimated Customer Total Price: \$6,313
Estimated Customer Price by Lineal Foot: \$527



List Price: \$9,068
Estimated Customer Total Price: \$6,348
Estimated Customer Price by Lineal Foot: \$529



List Price: \$9,078
Estimated Customer Total Price: \$6,355
Estimated Customer Price by Lineal Foot: \$530



List Price: \$9,194
Estimated Customer Total Price: \$6,436
Estimated Customer Price by Lineal Foot: \$537



List Price: \$9,814
Estimated Customer Total Price: \$6,870
Estimated Customer Price by Lineal Foot: \$573



List Price: \$10,502
Estimated Customer Total Price: \$7,352
Estimated Customer Price by Lineal Foot: \$613



List Price:\$9,904
Estimated Customer Total Price: \$6,933
Estimated Customer Price by Lineal Foot: \$578

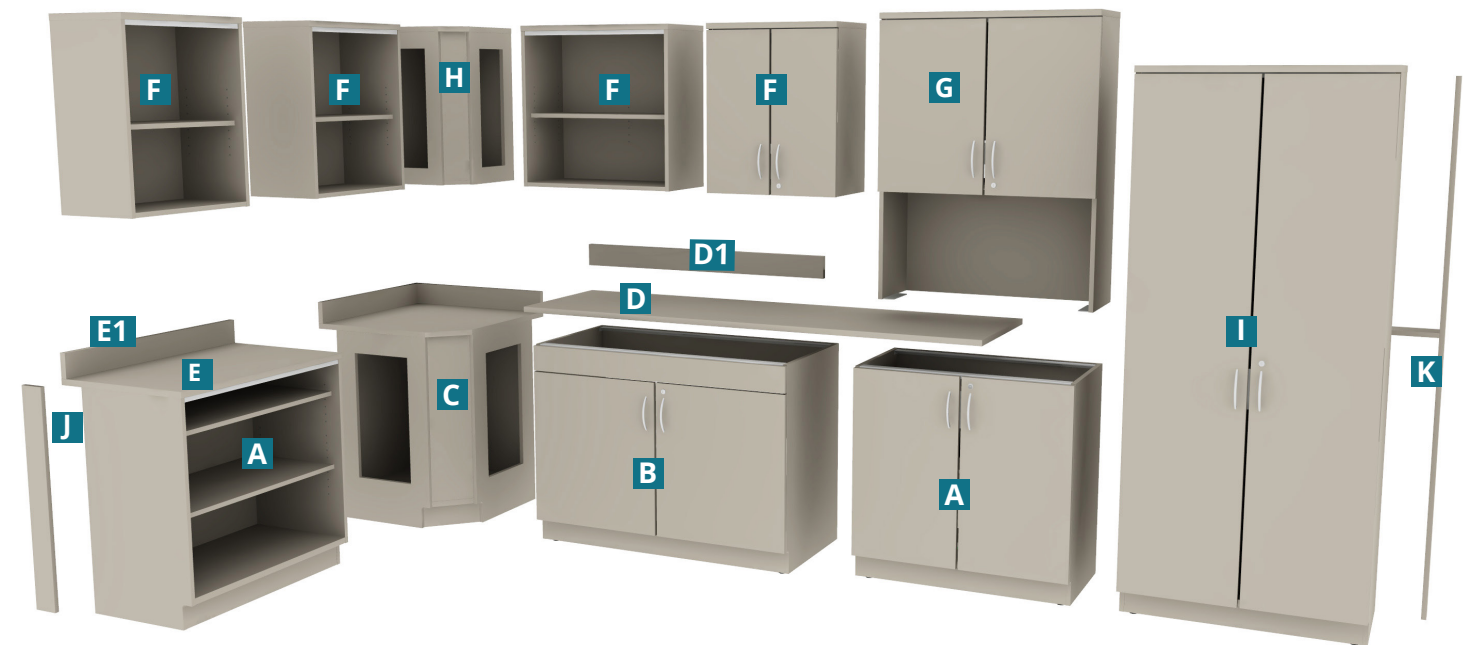


List Price:\$10,400
Estimated Customer Total Price: \$7,280
Estimated Customer Price by Lineal Foot: \$607



List Price:\$13,934
Estimated Customer Total Price: \$9,754
Estimated Customer Price by Lineal Foot: \$813

ILLUSIONS 2.0 COMPONENTS – DEEP DIVE



Unassembled Modular Components



Assembled Modular Components



A – BASE CABINET

- Acts as basic building block for Illusions 2.0
- Multiple functionalities provided – shelving, drawers, trays, lockers, displays, sink cabinets, etc.
- Comes standard with levelers, through bolts to connect to adjacent storage, and counterbalance weights (in many applications)
- Optional casters and quick-connect brackets available



B –SINK CABINET

- Available in two versions – plumbing concealing modesty panel or with doors
- Plumbing done in the field
- Sink purchased separately
- Sink cabinets come with a diagram showing allowable sink cutout area
- Sink and plumbing hardware are not included



C – BASE CORNER FILLER

- Fills corner spaces only when base storage is at 90 degrees
- Does not accommodate storage
- Includes worksurface with or without a backsplash as a standard



D – SPANNING WORKSURFACE

- Spans multiple base cabinets
- Provides a clean, seamless aesthetic
- More economical to use than matched-width worksurfaces
- Field installed
- NOTE: ALWAYS order worksurfaces for base cabinets (either spanning or matched-width)
- See “Worksurfaces and Backsplashes” section for more information



D1 – SPANNING BACKSPLASH

- Usually used in lab spaces where water is being used to help protect walls
- Designed for use against wall
- 1”D and 4”H
- Do not use in conjunction with hutches (If long backsplash is ordered, it can be field cut to accommodate for hutches if sides aren’t exposed.)



E – MATCHED-WIDTH WORKSURFACE

- Useful if Illusions 2.0 will be moved frequently
- Ordered as an option on the base cabinet
- Width matches base cabinet width



E1 – MATCHED-WIDTH BACKSPLASH

- Ordered as an option on the base cabinet
- Width matches base cabinet width
- Designed for use against wall
- 1”D and 4”H
- Do not use in conjunction with hutches



F – WALL-HUNG STORAGE UNITS

- Provide extra vertical storage while opening up worksurface area for other purposes
- Always wall-attached. Should also be bolted to adjoining cabinets for safety
- Comes with metal cleat so unit may be secured at proper height safely. Local codes may require another way to attach unit to the wall
- Low-profile LED lighting may be used under overhead storage. Light reveals or tackboards may be requested via specials

ILLUSIONS 2.0 COMPONENTS – DEEP DIVE (CONTINUED)



G – HUTCH

- Provides extra vertical storage will keep the worksurface accessible without requiring wall attachment in most circumstances
- May be used in perimeter or space division applications were more vertical storage is desired
- Must be set on top of a worksurface
- Mandatory metal bracket attaches unit to base cabinet for anti-tipping purposes
- May also be attached to adjoining high storage or the wall
- When facing a hutch front, the hutch end panel should be directly above the base cabinets end panel. If this cannot be achieved, keep the hutch end panel within 6" of the base cabinet end panel.
- May be used on top of 29"H or 37"H base cabinets. Hutch will align with 68"H, 76"H and 84"H tall storage. To determine proper hutch height, subtract tall storage height from base storage height (with worksurface).
- Basic storage hutches are 14"D. They are usually mounted flush with the back of the worksurface. If sandwiched between two tall cabinets, they may be mounted flush to the front of the base cabinet to improve access to storage articles or improve visibility of displays from various angles.
- Learning wall hutches have a 20"D top. This allows markerboards to be attached to the top of the unit. These units are handed – right, left and center. Learning wall hutches are not designed to hold lighting. They are designed to hold monitors and markerboards.
- No backsplash should be used in conjunction with a hutch
- Learn more about specifying hutches in "HUTCH" section



H – OVERHEAD CORNER FILLER

- Fill corner spaces only when wall-hung storage wraps around a corner
- Units do not accommodate storage



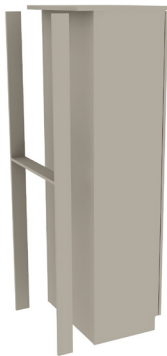
I – TALL STORAGE

- Provides efficient storage options with multiple functionalities – shelves, drawers, trays, cubbies, etc.
- Available in 68"H, 76"H and 84"H
- Connect to adjacent storage for added stability



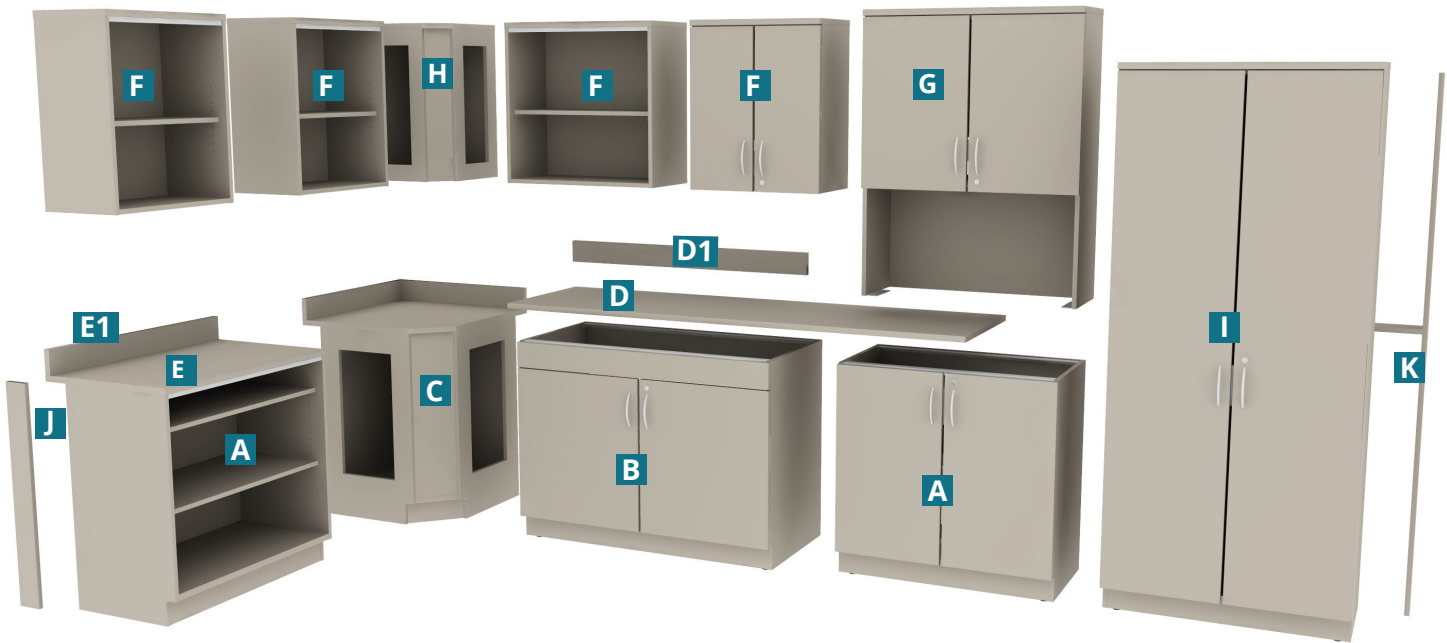
J – SIDE FILLER

- Conceals gaps between the case and the wall
- Used when 24"D worksurfaces or 25"D drip-edge worksurfaces are used
- Side fillers cover the 4"D cavity in the back of the unit, which an be used to accommodate cable and power routing, plumbing, HVAC, etc.
- Side fillers are not needed if 20"D worksurfaces are used
- Fillers may be field cut to size if needed
- Multiple types of filler are available – to better understand fillers, see "Filler Basics"



K- TALL (SIDE) FILLER

- Conceals gaps between the case and the wall
- In 20"D applications, tall fillers are not needed
- Use in back of a 20"D tall cabinet if the tall cabinet is pulled flush with the front of a 24"D worksurface and the side of the tall cabinet is exposed.
- The 4" chase created with a tall cabinet is pulled flush with a 24"D worksurface will accommodate cable and power routing, plumbing, HVAC, etc.





Components for a Illusions 2.0

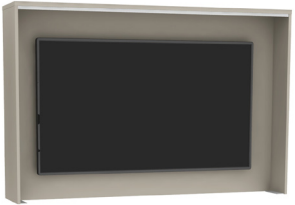


Assembled Illusions 2.0



A – 14”D BOOKCASE (BASE)

- Provides open shelving for object storage
- Comes standard in TFL laminate with metal shelf option in most cases
- Adjustable shelving can be moved in 1” height increments
- Additional shelves may be ordered separately
- Includes 1”H top



C – MONITOR HUTCH

- Holds monitors
- May be mounted flush with back or front of base cabinet



B – 14”D BOOKCASE

- Provides space efficient open shelving for object storage
- 14”D complements 20”D cabinets as the 6” offset is part of the design intent
- 14”D helps with space compression issues versus deeper storage
- No fillers are available for bookcases, which should be installed against wall
- If a deeper shelf is desired, use regular 20”D shelf
- Connect to other Illusions 2.0 componentry for stability. Connect 44”H and taller units to the wall to prevent accidental tipping.
- Double-sided bookcases are also available for use away from the wall. These bookcases are used in conjunction with the endcap bookcases that finish off the end of a run.



WORKSURFACES AND BACKSPLASHES

Base cabinets DO NOT automatically include a worksurface, but a worksurface IS REQUIRED in all applications. A worksurface may be specified in two ways: spanning worksurface or a matching-width worksurface. Backsplashes follow a similar logic.



Spanning worksurface with spanning backsplash

SPANNING WORKSURFACE

- Ordered separately from the base cabinets
- Range in length from 48”W to 120”W in 3” wide increments
- Offer depths of 20”D to align with 20”D cabinets, 24”D if a 4”D chase is desired behind the cabinet, and 25”D if a drip edge is needed
- Are 1”H to align with Fleetwood table heights
- Spans multiple base cabinets to provide a clean, seamless aesthetic
- Can use multiple spanning worksurfaces in one application
- Field installed
- May be field cut for wall-to-wall aesthetic
- Can be reconfigured
- How to order:
 - o Calculate total length of base cabinet run
 - o Select one or multiple spanning worksurface model number(s) to equal the length of the base cabinet run
 - o The end of the worksurface should align with the top of a base cabinet end panel, but it can be up to 6”W over the end panel. This condition might occur if wall-to-wall fit-up is desired. In this case, use a front filler to cover the opening by the base cabinet.
 - o Spanning worksurfaces may span up to a 48”W opening between two base cabinets. This condition might exist if a small desk-like nook or mobile storage docking area is desired.

SPANNING BACKSPLASHES

- Not required but recommended with sink cabinet that has no wall-attached backsplash
- Ordered separately from the base cabinets
- Range in length from 48”W to 120”W in 3” wide increments
- Spans multiple base cabinets to provide a clean, seamless aesthetic
- Can use multiple spanning backsplashes in one application
- Field installed. Piece should be glued to top of worksurface and wall.
- May be field cut for wall-to-wall aesthetic
- Do not use any backsplash with hutch application
- Recommend silicon caulking where worksurface and backsplash meet

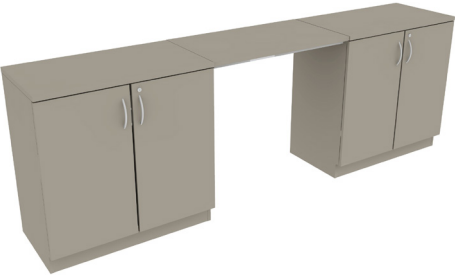
SPANNING WORKSURFACE INSTALLATION TIPS

- Check walls to determine if they are true and squared or have waves in the wall. If waves, adjust cabinet placement accordingly
- If using 24”D or 25”D worksurfaces, measure a 4”D gap between the back of the cabinet and the wall to allow for the chase to accommodate cables, power, plumbing and HVAC
- Install all base cabinets first and level. Leave space for bridge worksurfaces or install at the same time as base cabinets to allow adequate space
- Attach worksurfaces to base cabinets through holes in the front and back metal reveal brackets
- After installing worksurfaces, field install grommets in worksurfaces
- Install fillers if needed. See FILLER BASICS for side and front fillers



MATCHING-WIDTH WORKSURFACES AND MATCHING-WIDTH BACKSPLASHES

- Both are ordered as an option on the base cabinet. NOTE: Either a matching-width or spanning worksurface is required, but all backsplashes are optional.
- Both match the width of the cabinet (15”W to 48”W)
- Worksurfaces offered in depths of 20”D to align with 20”D cabinets, 24”D if a 4”D chase is desired behind the cabinet, and 25”D if a drip edge is needed
- Are 1”H to align with Fleetwood table heights
- Both will create a seam line between each cabinet. Consider spanning worksurfaces for sink applications or if dust and dirt will be on counter regularly.
- Both are factory installed and attached with metal fasteners. The seam where the worksurface and backsplash meet is caulked.
- Designed for permanent attachment to base cabinet



BRIDGE WORKSURFACES

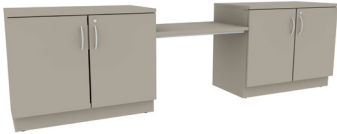
- Use with matching-width worksurfaces to create a kneespace if a small desk-like nook or mobile storage docking area is desired
- Use with spanning worksurfaces if a lower height worksurface is desired in a kneespace. For example, younger children or ADA situations may desire a worksurface lower than the standard 29”H or 37”H of the worksurface.

DESKING OPPORTUNITIES

If a desk area is desired, it can be created in multiple ways.



1. Spanning tops create the most economical solution if the open span is under 60”W.



2. Bridge worksurfaces are recommended for matching width worksurface applications or if lower heights are desired.



3. While base desks may be used in the center of a configuration, they are not as economical as spanning or bridge worksurfaces. However, they provide necessary support on the end of a run.

HUTCHES

Two types of hutches may be used if no sliding markerboard is desired. One is dedicated to storage. One is for holding monitors. These hutches cannot be used in conjunction with learning wall hutches, that are designed for use with sliding markerboards. See following pages for more details on these units.



Open and closed storage hutch

1. HUTCH (STORAGE)

- Use storage hutches when storing objects and access to worksurface is desired
- No monitors or markerboards may be used with a storage hutch
- Mount on top of lower storage without a backslash
- Nonhanded



Monitor hutch used alone

2. MONITOR HUTCH

- Use a monitor hutch to hold a monitor
- No other type of object storage is accommodated
- Sliding markerboards cannot be used with a monitor hutch because the top panel is not deep enough. Sliding markerboards can only be used with learning wall hutches and learning wall monitor hutches
- Monitors are mounted to the back panel with off the shelf monitor mounts
- Monitors are always visible
- Nonhanded
- Specification Tip: Use a spanning top under a Monitor Hutch to create a clean line (no seams). Also this will allow seam to align with the seams at the top of the hutch.



LEARNING WALL HUTCHES

LEARNING WALL STORAGE AND LEARNING WALL MONITOR

Two types of learning wall hutches are available:

1. LEARNING WALL HUTCH (RIGHT-HANDED SHOWN)

- Provides shelf storage behind a sliding markerboard (purchased separately)
- The learning wall hutch is available in 36"W, 42"W and 48"W

2. LEARNING WALL MONITOR HUTCH (LEFT-HANDED SHOWN)

- Supports a monitor in conjunction with a sliding markerboard
- The monitor hutch widths are 72"W, 84"W, and 96"W

3. SLIDING MARKERBOARD

- Used in conjunction with other learning wall products only
- Provides a high-quality porcelain metal writing surface
- Boards overlap so they can be moved out of the way

LEARNING WALL HUTCH TIPS

- The learning wall hutch can be used either with other learning wall hutches or with learning wall monitor hutches. The learning wall monitor hutch is always used in conjunction with at least one learning wall hutch.
- Learning wall hutches cannot be used with basic hutches and monitor hutches when a sliding markerboard is used.
- Both types of hutches are handed – left, right and center. The left unit has a deeper left end panel. The right unit has a deeper right end panel. The center unit has shallow end panels on both sides.
- Both learning wall hutches work with sliding markerboards but rules apply.
 - o Sliding markerboard rails MUST have both a right and a left learning wall hutch or learning wall monitor hutch to capture the ends of the rail at the outer limit of the learning wall.
 - o Shallower hutch end panels allow the markerboards to run freely on the track. Markerboards CANNOT pass by deeper end hutch panels.

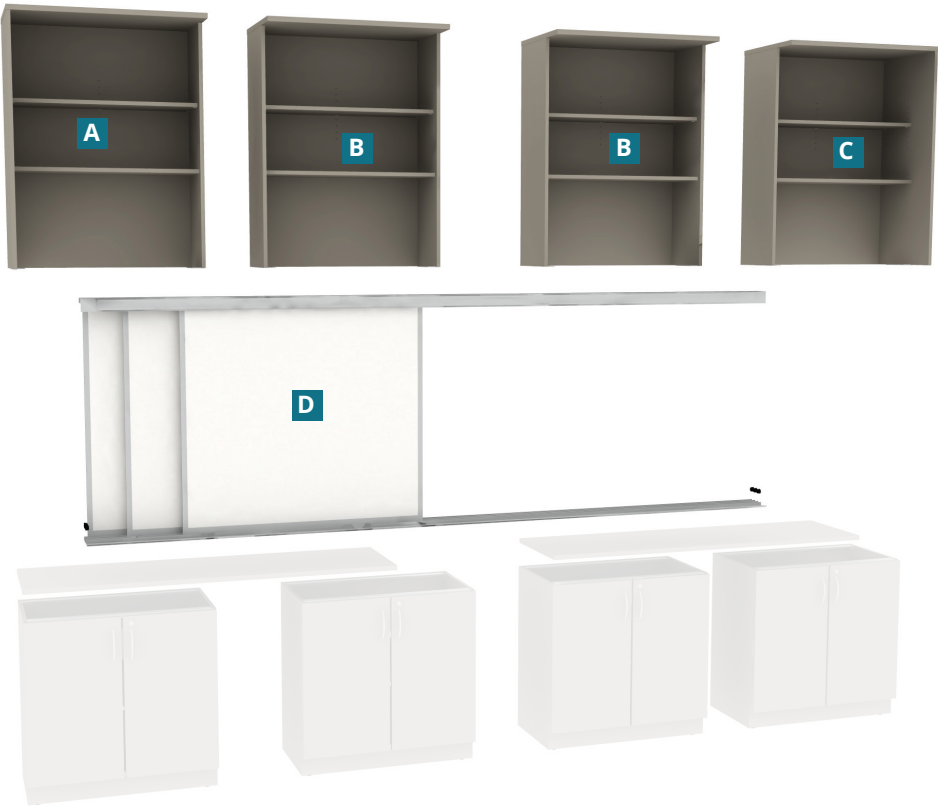
Learn more about learning wall applications in the Illusions 2.0 Learning Wall Specifications Guidelines on following pages.



LEARNING WALL SPECIFICATION GUIDELINES

Learning walls can be used to add technology and markerboards into Illusions 2.0 to meet the greater needs of a classroom. Two types of hutches are available for use – learning wall hutch and the learning wall monitor hutch.

LEARNING WALL HUTCH OVERVIEW



Components for a learning wall with markerboards



Assembled learning wall with markerboards



A – LEARNING WALL LEFT HUTCH

Shelving storage hutch with overhanging 20”D top that captures the markerboard track. It is used on the left side of the configuration and stops the markerboards from coming off of the markerboard track.



B– LEARNING WALL CENTER HUTCH

Shelving storage hutch with overhanging 20”D top that captures the markerboard track. One or multiple center learning wall hutches may be used, but they must always be sandwiched on the ends by right and left learning wall hutches.They can never be used alone. The shallow end panels on the center hutch allow the markerboard to flow back and forth on its tracks. If not sandwiched with left and right hutch units, the markerboards are not secured on the track.



C – LEARNING WALL RIGHT HUTCH

Shelving storage hutch with overhanging 20”D top that captures the markerboard track. It is used on the right side of the configuration and stops the markerboards from coming off of the markerboard track.



D – SLIDING MARKERBOARD

The sliding markerboard is used in conjunction with multiple learning wall hutches or a combination of learning wall hutches and learning wall monitor hutches. It is never used with only a learning wall monitor hutch because it will obscure the monitor (See more below). Widths come in 72”, 84”, 96”, 108”, 126”, 144”, 168”, and 192” and span multiple learning wall hutches. They are never used in a 1:1 ratio with learning wall hutches.

LEARNING WALL MONITOR OVERVIEW



A – LEARNING WALL LEFT HUTCH
Shelving storage hutch with overhanging 20”D top that captures the markerboard track. It is used on the left side of the configuration and stops the markerboards from coming off of the markerboard track.



B – LEARNING WALL CENTER MONITOR HUTCH
Hutch that is dedicated to holding a monitor and supporting markerboard tracks. The overhanging 20”D top captures the markerboard track. Unless multiple monitors are desired, only one of these units will be used per application. Always sandwich the ends of a center monitor hutch with right and left learning wall hutches. Center learning wall monitor hutches are never be used alone. The shallow end panels on the center hutch allow the markerboard to flow back and forth on its tracks. If not sandwiched with left and right hutch units, the markerboards are not secured on the track. (NOTE: If only a monitor is desired with no markerboards, use an Illusions 2.0 monitor hutch – GHM model numbers.)



C – LEARNING WALL RIGHT HUTCH
Shelving storage hutch with overhanging 20”D top that captures the markerboard track. It is used on the right side of the configuration and stops the markerboards from coming off of the markerboard track.



D – SLIDING MARKERBOARD
The sliding markerboard is used in conjunction with multiple learning wall hutches or a combination of learning wall hutches and learning wall monitor hutches. It is never used with only a learning wall monitor hutch because it will obscure the monitor (See more below). Widths come in 72”, 84”, 96”, 108”, 126”, 144”, 168”, and 192” and span multiple learning wall hutches. They are never used in a 1:1 ratio with learning wall hutches.

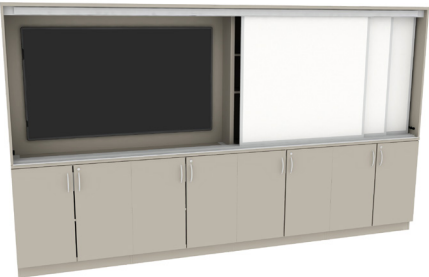
SELECTING THE RIGHT HUTCH FOR YOUR APPLICATION

Below are some examples of the hutch storage you need to order to create various applications.



Use Monitor Hutch (GHM series) and Hutch (GHS series)

MONITOR ON LEFT/STORAGE ON RIGHT AND NO MARKERBOARD



Use learning wall monitor hutch (GHF series), learning wall sliding board (GS series) and learning wall hutch (GHR series)

MONITOR ON LEFT, SLIDING MARKERBOARD ACROSS THE EXPANSE, AND SHELF STORAGE ON RIGHT



Use Learning wall hutch (GHL and GHR series) and learning wall sliding board (GS series)

SLIDING MARKERBOARD WITH STORAGE ONLY ON RIGHT AND LEFT WITH NO CENTER STORAGE



HUTCH TIPS

Following a few simple rules will help you avoid mistakes. Please see the following guidelines.

- 1. Never use a single learning wall monitor hutch with a sliding markerboard. It will cover up a portion of the monitor even when boards are layered. Always specify at least one additional learning wall hutch to complete the application.



Single monitor hutch with sliding markerboard covers monitor

- 2. The center learning wall monitor hutch can never be used without both a right and left-hand learning wall hutch. A left learning wall monitor hutch must always be used with a right learning wall hutch and vice versa.



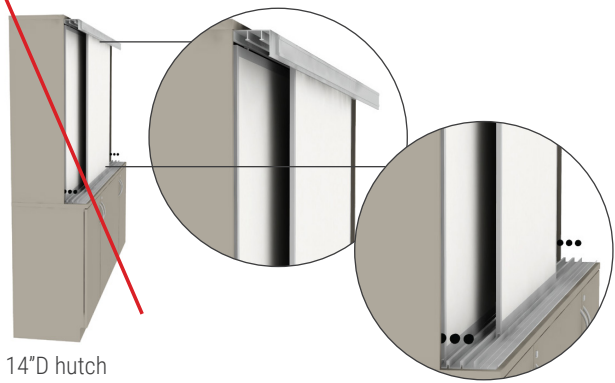
Storage and markerboard application shown correctly using center hutches (GHH series).

- 3. Hutches must be used instead of tall storage on the sides of a learning wall monitor hutch to allow the markerboard track to flow past the learning wall monitor hutch.

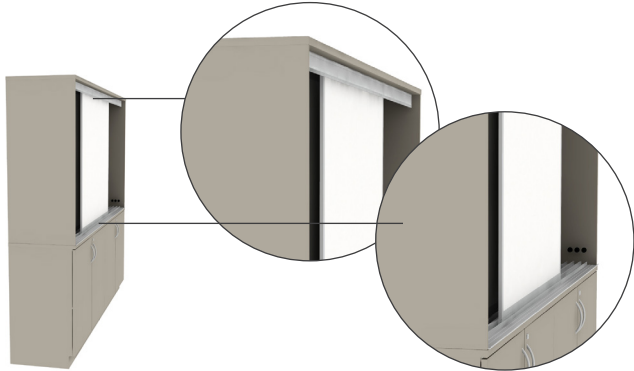


Sliding markerboards need multiple learning wall hutches to slide properly and allow access to information behind the markerboard.

- 4. Sliding board learning walls cannot be used with storage or monitor hutches. They can only be used with learning wall hutches because these units have 14”D tops and not 20”D tops, on which the sliding board hangs.

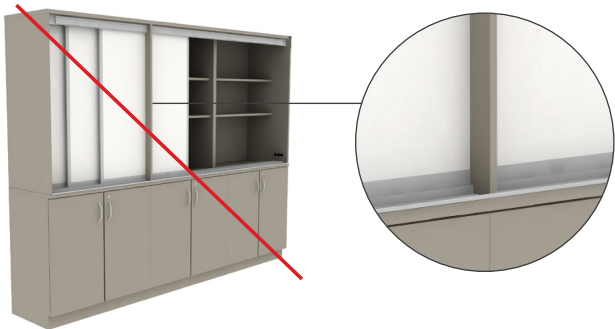


14”D hutch



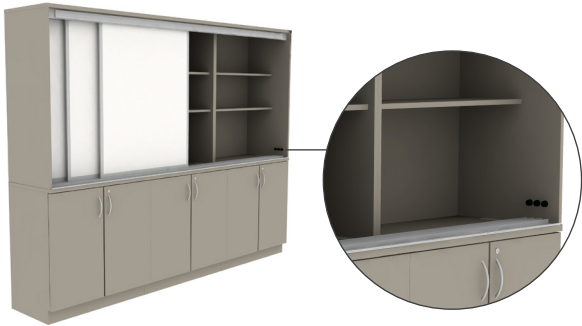
20”D top on learning wall hutches

- 5. Left and right learning wall learning wall hutches (either for storage or for monitors) are only used on the outer ends of an application. If used in a center area, they block the movement of the sliding markerboard. If two learning wall hutches are needed to complete a run, use one left and one right. If more than two learning wall hutches are needed to complete a run, use one left hutch, one or more center hutches, and one right hutch. This will allow markerboards to travel the full length of the run.



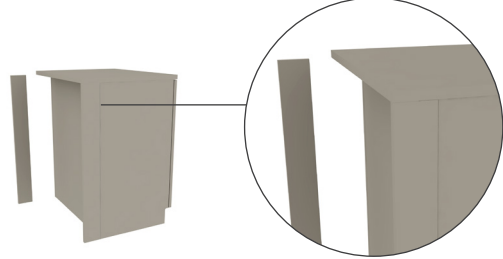
Storage and markerboard application shown specified incorrectly .LEFT learning wall hutch was used in the center versus on the end.

- 6. Learning Wall center hutches ((either for storage or for monitors) can never end a run of storage. Right and left learning wall hutches can only be used on the right and left, respectively. They cannot be interchanged.



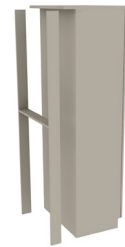
FILLER BASICS

- Fillers are used to fill gaps in three conditions:
- Deeper worksurfaces (24”D or 25”D) with chase behind storage--Because components are 20”D, a filler is needed on the end-of-the-run to cover the gap between the back of the component and the wall. The 4” gap creates a chase to accommodate cabling, plumbing, HVAC, or building architecture, and it can be very useful in remodeling projects. In this situation, side fillers are needed
 - Wall-to-wall fit-up where Illusions 2.0 is sandwiched between to walls – Illusions 2.0 components are on 3” and 6” modules. Because side walls will probably not be on the exact same module, base front fillers in combination with field-cut spanning worksurfaces will support a tight fit-up to create an built-in appearance.
 - Corner application – When lower and/or wall-hung storage wrap around a corner, corner fillers are required to eliminate air gaps.



SIDE FILLERS (FOR BASE STORAGE)

Side fillers close the gap between the back of the base cabinet and wall. These are 4” deep, and no field cutting should be required unless walls are not square to the floor. Use side fillers for end-of-run applications where a gap is visible on the side of a cabinet. They should not be used behind interior cabinets. Keeping the interior back space open to accommodate cabling, plumbing, architecture, etc., is ideal.



TALL (SIDE) FILLER (FOR TALL CABINETS)

Tall (side) fillers are a variant of the base cabinet side filler. They are used with towers and wardrobe type storage (68” to 84” high), with an optional 24” deep top. The side panel for the tall filler extends the full height of the unit (minus the top). This allows tall storage front to be flush with 24” deep base storage.



FRONT FILLERS

Front fillers close the gap between the front of the cabinet and the adjoining wall. They are field cut to account for architectural wall variances. They conceal air gaps, power, data, plumbing and architectural elements from view. Front fillers are flush with the toe kick when installed. Use front fillers with extended width spanning worksurfaces. Order the worksurface so it spans the gap between the cabinet and the wall. If a tall cabinet front filler is needed, ask for a quote from Fleetwood specials. Front fillers for tall cabinets may be ordered via Fleetwood specials.



CORNER FILLERS (FOR BASE STORAGE)

Base corner fillers are engineered to prevent adjacent doors from touching each other when opened and to conceal air gaps. These fillers are 3-dimensional and include tops but do not provide any storage. Corner fillers are required in all 90-degree planning solutions.



CORNER FILLER (FOR WALL-HUNG STORAGE)

Wall-hung corner fillers prevent adjacent doors from touching each other when opened. These 3-dimensional fillers are used in 90-degree conditions and do not store anything.



CASE CONNECTIONS



Through bolt connectors

THROUGH BOLTS

Through bolts are standard with all cabinets. These bolts are installed in the field to connect adjoining cases. Cases are drilled in the field to accept through bolts.



Quick-connect brackets

QUICK-CONNECT BRACKETS

Fleetwood also offers optional quick-connect brackets, which are used in place of through bolts. They align and connect adjoining cabinets, but they are not weight bearing. Quick-connect brackets eliminate many drilling field drilling requirements and eliminate holes in cabinet side panels.

MOBILITY

Illusions 2.0 has two mobility options which are hidden behind the 4”H toekick.

LEVELERS

3.5”H levelers are standard on all units that sit on the floor. Units with levelers are moved with dollies. A hole exists in the back base panel of storage units to allow for easy leveler access. Front glides are accessed under the front toekick.

LEVELER/CASTER ASSEMBLIES

An optional leveler/caster assembly is available as an option. This option allows units to be rolled from truck to installation site easily and quickly. When unit is in place, adjust glides to the proper leveled height. When moving, release the glides and use the casters to move units to new location.

PULL HARDWARE

Illusions 2.0 and Designer 2.0 offer the same pull and hinge options for aesthetic compatibility of the two lines.



128mm Arch pull



128mm Metro pull



128mm Urban pull



SPECIFICATIONS STEPS

Think of Illusions 2.0 as a kit of parts where items can be mixed and matched. Follow the simple steps below to achieve beautiful results.

1. Choose desired base cabinets and layout
2. Add desired worksurface – spanning vs. independent and choose depth (20”, 24”, or 25” deep)
 - a. If using a 20” deep worksurface, no side fillers are needed.
 - b. If using 24” or 25” deep worksurfaces, side fillers may be needed. Plan to address these in your final step.
 - c. DON'T FORGET THE WORKSURFACE! This is the most common error.
 - d. If using short bookcases, 1”H top is on the unit, so no additional worksurface is needed.
3. Choose tall storage and bookcases
 - a. If 14”D or 20”D tall storage or bookcases were elected, no fillers are needed.
 - b. If 24”D or 25”D tall storage was selected, tall side fillers might be needed.
4. Select upper storage – choose from wall-hung cabinets or hutches. If using Learning Wall hutches, review application rules before specifying. Make sure you know how to use left, right and center hutches. Using the proper handed hutch is easy if rules are followed.
5. Review the final application
 - a. Add fillers that will be needed on exposed end-of-runs or on the fronts of units if a snug wall fit is desired.
 - b. Add optional backsplashes, if desired.

SPECIFICATION TIPS

Measure with care – be sure to account for such obstacles as fire suppression ceiling fixtures, light switches, phones, intercoms, fire extinguishers, baseboards, windows, heating/cooling vents, and exposed plumbing fixtures/pipes as you determine the space for furnishings.

Measure twice, cut once applies to anything field cut – like base fillers, backsplashes, and grommets.
Freestanding away from the wall? Consider your storage application – will furniture remain stationary against the wall, or will they be used to separate space in your room? Illusions 2.0 may be used to accomplish space division because the backs are finished. Be sure to secure the product in alignment with local codes, which may require the product to be secured to the floor.

Keep it Clean – Using the same size width for base, hutch, and wall-hung storage will create a clean, eye-appealing look.

Be Budget Wise – Open cabinets are most economical. Add doors and drawers where necessary. Other ways to lower your costs include using:

- Levelers versus leveler/caster option
- Spanning tops versus independent tops
- Backsplash free solutions
- Lower height solutions (i.e., 76”H vs. 84”H)
- Wider versus narrower cabinets

Different by Design – design and depth changes in Illusions 2.0 base cabinets do not allow for connection to base cabinets from our legacy Illusions Collection.



ILLUSIONS 2.0 + DESIGNER 2.0 + TABLES + SEATING = GREAT CLASSROOM ENVIRONMENTS



While Illusions 2.0 works great alone, its power is multiplied when used in conjunction with Designer 2.0, any Fleetwood table, or any Fleetwood chair solution.

Illusions 2.0 and Designer 2.0 are on the same platform so heights, widths, and depths line up. Fleetwood also redesigned tables so they all have 29” and 37” heights and 1” thick tops to match base storage.

All seating is designed to provide the correct ergonomic gap between chair seat height and table underside.

Plus, everything is offered in the coordinating surface materials to create a unified aesthetic throughout the classroom.



