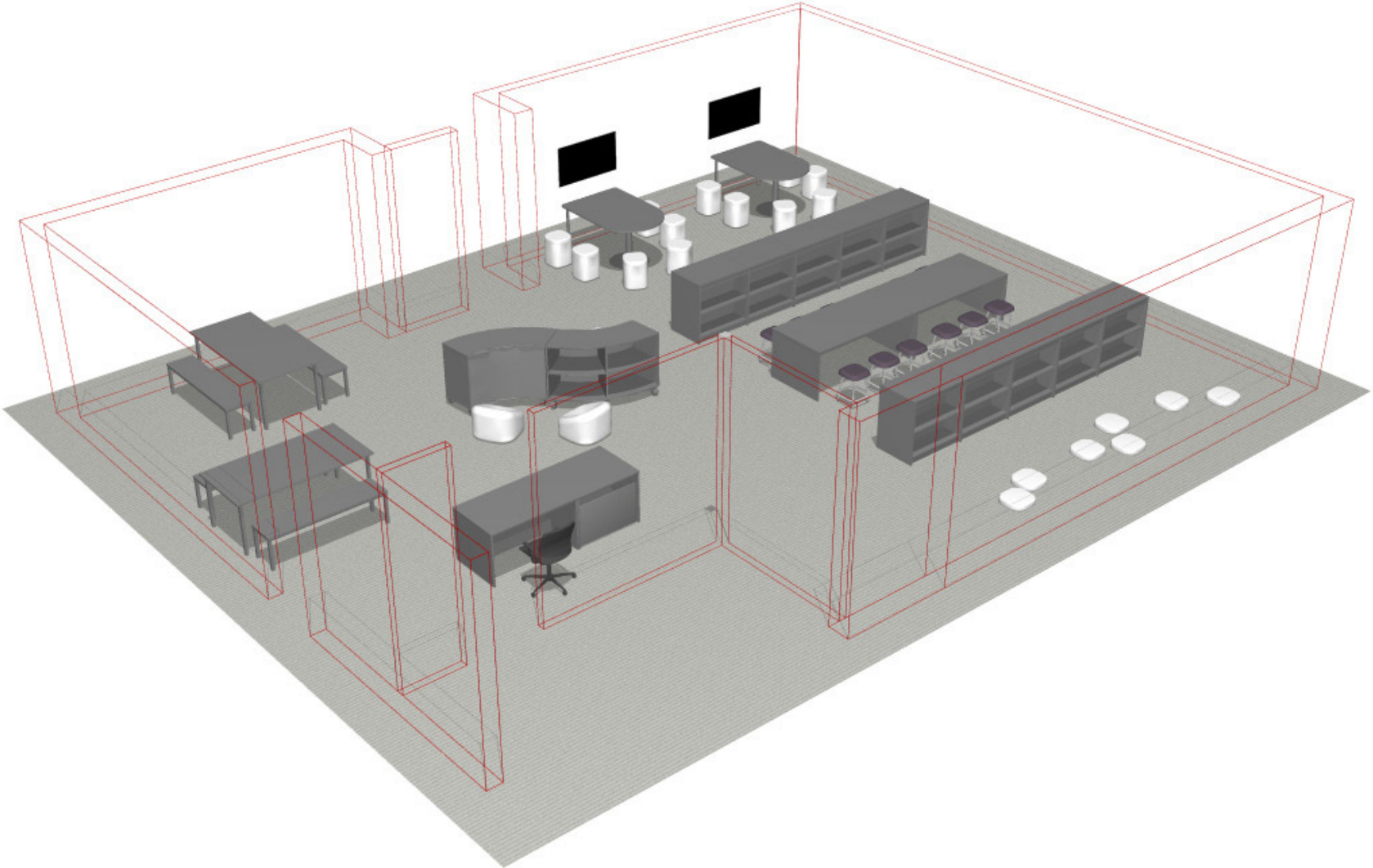


PERSPECTIVE VIEW

**MDC.000.000.02**

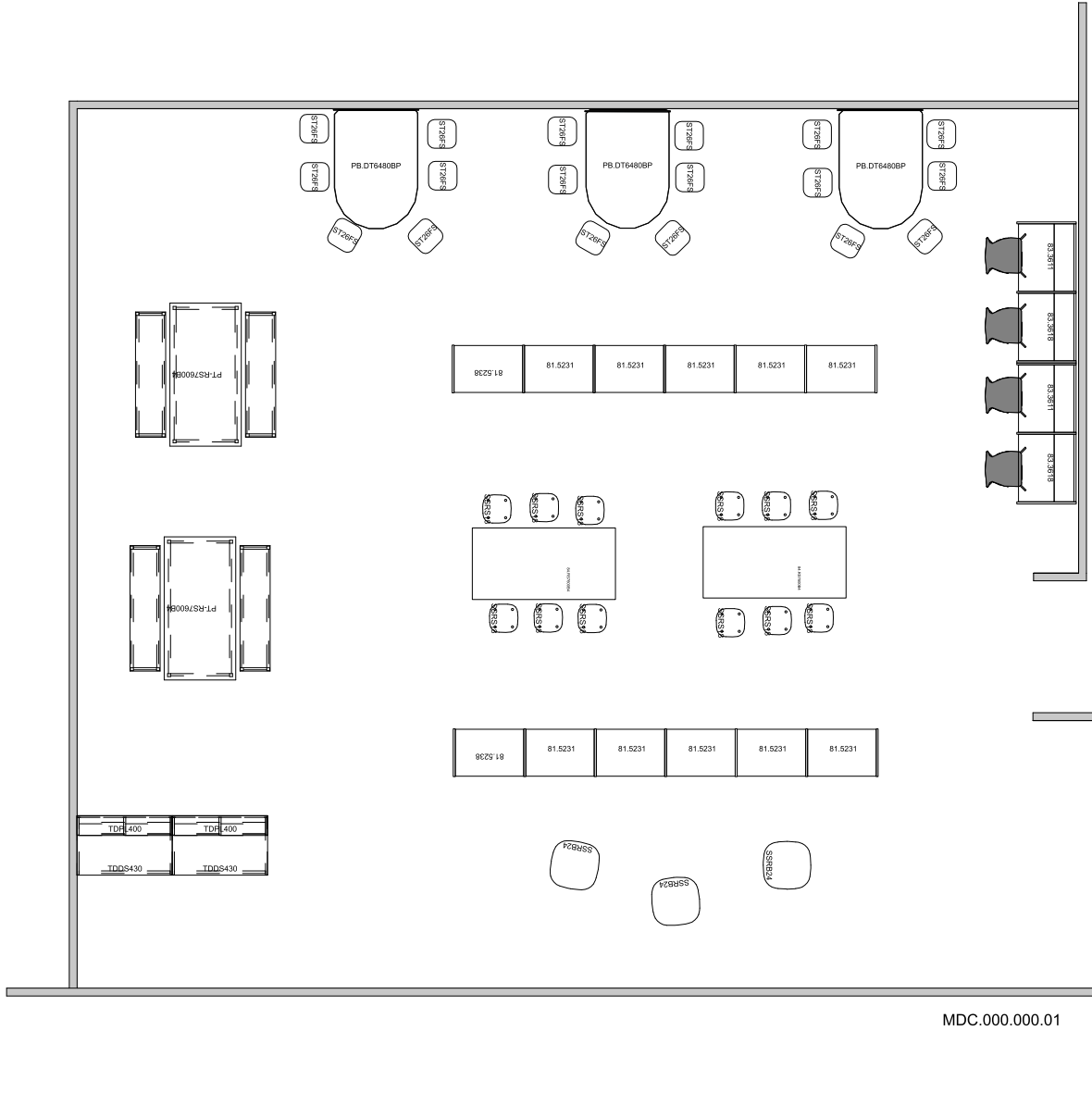
Media Center.No Method.No Method.#2



# PLAN VIEW

## MDC.000.000.02

Media Center.No Method.No Method.#2



MDC.000.000.01

# PRODUCT LIST

## MDC.000.000.02

Media Center.No Method.No Method.#2

PART NUMBER	DESCRIPTION	QTY	LIST	EXT. SELL
81-3624A_	Shelf ( 4) DS Adder Base 35w 36h 24d	8	\$874	\$6,992
81-3624S_	Shelf (4) DS Starter Base 36w 36h 24d	2	\$1,030	\$2,060
84-RS7600B4	Full End Legs 72w 29h 36d	2	\$920	\$1,840
P400	Low Arc No Drs Cstrs 60w 36h 20d	2	\$1,532	\$3,064
PB-DT6480B4	1 Ped Base 2 Legs Fxd Ht Lvlrs/Glds 42w 29h 60d	2	\$968	\$1,936
PT-RS7600B4	Table 72w 29h 36d Benches(2) 63w 18h 15d Fxd Ht Lvlrs	2	\$1,276	\$2,552
SSRB24	Soft Rock Foam Bean Bag 24w 8-20h 24d	4	\$186	\$744
SSRF14	Soft Rock Floor Cushion 15w 3h 15d	7	\$98	\$686
SSRS18	Soft Rock Stool Stationary Base Glides 14w 18h 14d	12	\$312	\$3,744
ST18FS	Dark Graphite Seat 13.5w 18h 13.5d	12	\$460	\$5,520
TDBR330	Transaction Desk Book Return, Levelers 36w 30h 30d	1	\$1,022	\$1,022
TDBT311	Transaction Desk Book Drop Cart, Concealed Casters 32.5w 26h 20d	1	\$628	\$628
TDDS430	Transaction Desk Straight Desk, Levelers 48w 30h 30d	1	\$1,130	\$1,130

Total FLEETWOOD - \$31,918.00

RENDERING

**MDC.000.000.02**

Media Center.No Method.No Method.#2

